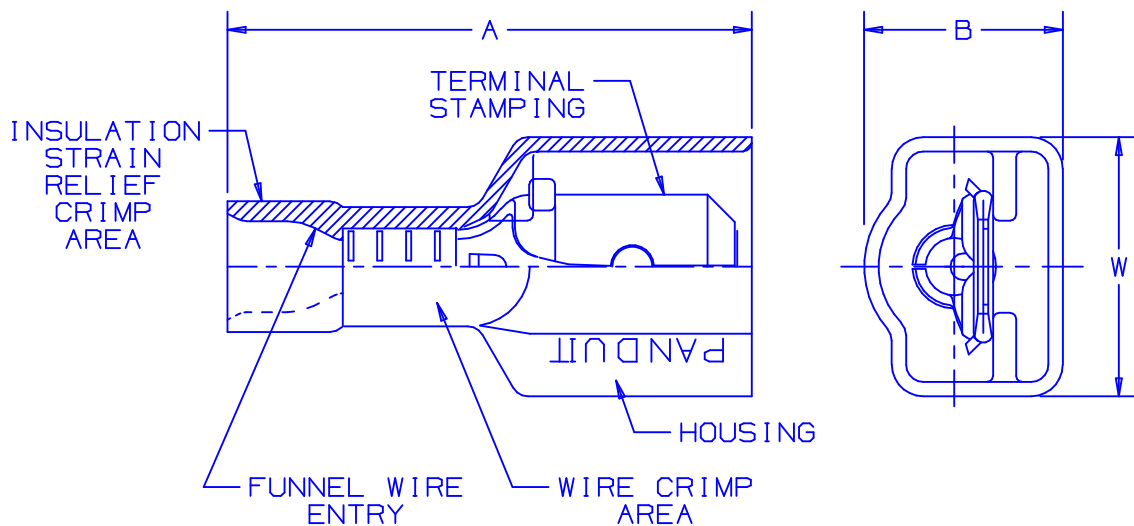
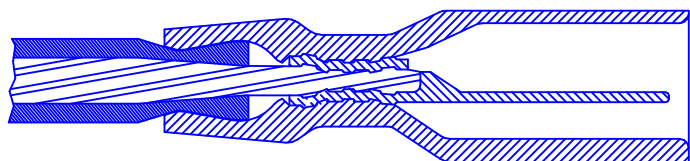


THIS COPY IS PROVIDED ON A RESTRICTED BASIS AND IS NOT TO BE USED IN ANY WAY DETRIMENTAL TO THE INTERESTS OF PANDUIT CORP.



NOTES:

1. USED FOR:
  - A. 600V MAX VOLTAGE RATING
  - B. 221°F (105°C) MAX TEMP RATING
  - C. STRANDED COPPER WIRE ONLY
2. WIRE STRIP LENGTH:  $9/32^{+1/32}_{-0}$  (7.1<sup>+0.8</sup><sub>-0</sub>)
3. MATERIAL:
  - A. STAMPING: NICKEL PLATED BRASS
  - B. HOUSING: PREMIUM GRADE NYLON FOR SUPERIOR STRAIN RELIEF INSULATION CRIMPING
4. PACKAGING:
  - A. STD: -L = 50
  - B. BULK: -D = 500
5. DIMENSIONS IN BRACKETS ARE IN MILLIMETERS OR mm<sup>2</sup>



SECTION VIEW OF CRIMPED DISCONNECT

PART NUMBER		TAB SIZE	WIRE RANGE AWG (mm <sup>2</sup> )	COLOR	MAX WIRE INSULATION DIAMETER	MIN WIRE INSULATION DIAMETER	DIMENSIONS in			CRIMP TOOLS
PREFIX	PK						A <sup>±.03</sup> (.8)	B <sup>±.02</sup> (.5)	W <sup>±.02</sup> (.5)	
DPF18-250F1MB	-L -D	.250 X .032 (6,3 X 0,8)	22-18 (0,5-1,0)	RED	.133 (3,38)	.080 (2,03)	.92 (23,4)	.34 (8,6)	.46 (11,7)	CT-520 CT-1525
DPF14-250F1MB	-L -D	.250 X .032 (6,3 X 0,8)	16-14 (1,5-2,5)	BLUE	.156 (3,96)	.090 (2,29)	.92 (23,4)	.34 (8,6)	.46 (11,7)	



A41512\_05

05	7/03	KLFU		UPDATED DRAWING; WIRE RANGE WAS 0,5-1,5 ADDED CT-1525 TO TOOL CHART						PANDUIT CORP. TINLEY PARK, ILLINOIS DISCOGRIP™ LOOSE PIECE PREMIUM NYLON FULLY INSULATED UNIVERSAL MALE DISCONNECT .250 X .032				
04	1/01	RM	SKB	FILESPEC WAS N41512AA_PCD_03	8933		CCH	JAC						
03	10/98	JD		MATERIAL WAS TIN PLATED	07642									
02	10/96	TM	RS	UPDATED NOTES AND DIMENSIONS	05137		DH	LA						
REV	DATE	BY	CHK	DESCRIPTION	ECN	QA	PM	SUP	CUST		APP	DRAWN BY KC	CHK'D	SCALE