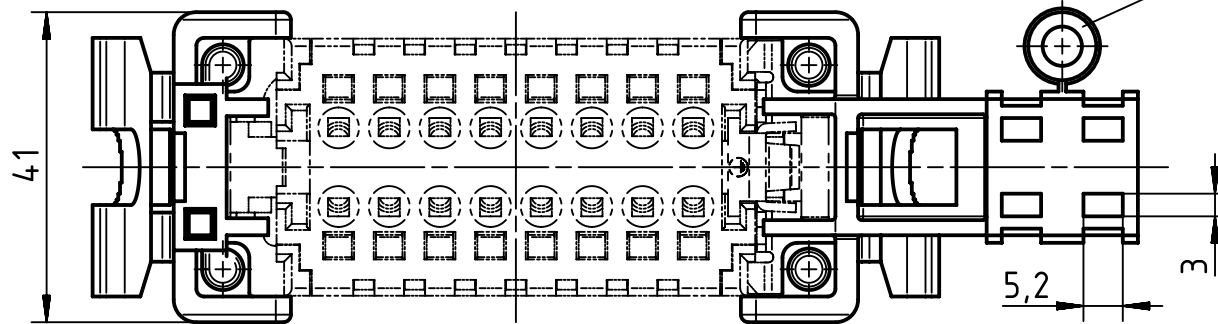


distance bush

Usable for all inserts of the series Han B

24	138,5	165
16	112	138,5
10	91,5	118
6	78,5	105
Size	a	b



	 All Dimensions in mm Original Size DIN A4	Scale 1:1	Free size tol.		Ref.	
		All rights reserved Department EL PD - DE	Created by PRIESTER	Inspected by BERGHORN	Standardisation TIEMANNA	Date 2014-03-14
HARTING Electric GmbH & Co. KG D-32339 Espelkamp		Title Han-Snap latching part w. strain relief			State Final Release	
		Type TB	Number 09 33 000 9991		Doc-Key / ECM-Nr. 100129946/UGD/005/A 500000072026	
					Rev. A	Page 1/1