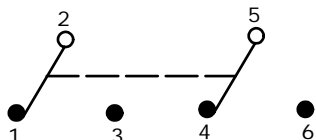


SWITCH FUNCTION		
POS. 1	POS. 2	POS. 3
(ON)	OFF (C)	(ON)
2-3, 5-6	OPEN	2-1, 5-4

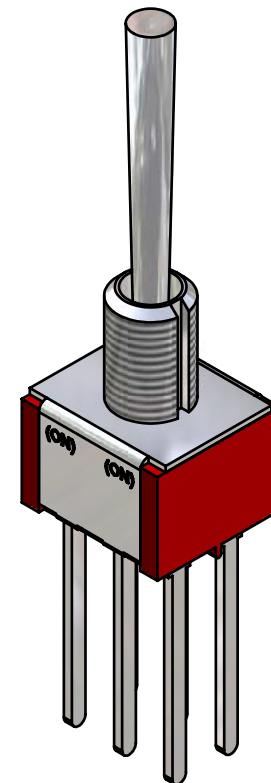
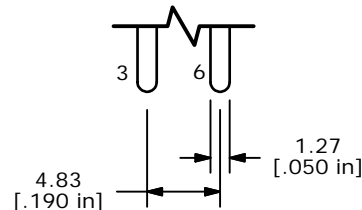
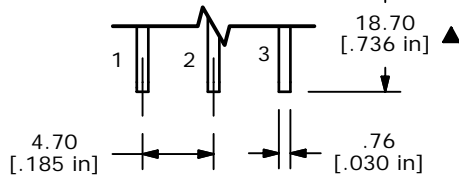
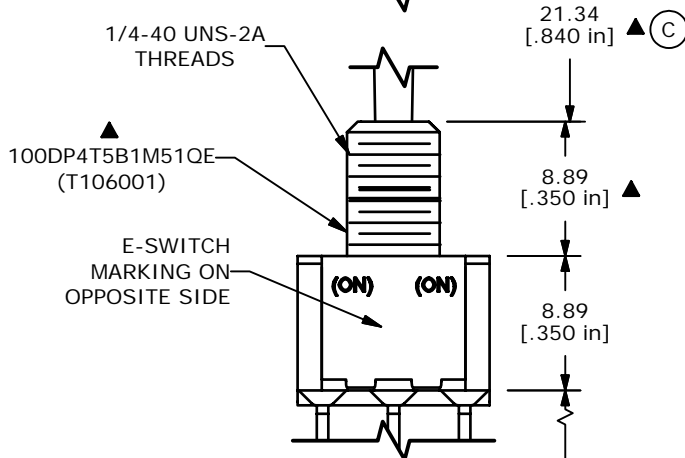
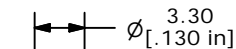
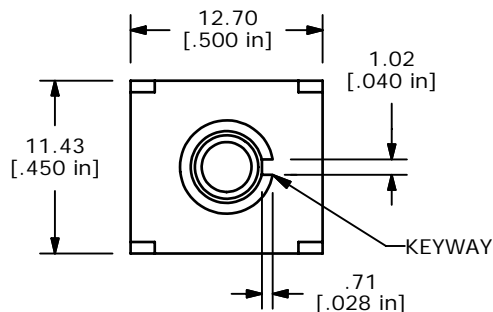
(ON) = MOMENTARY



CIRCUIT: DPDT

NOTE:

- ALL DIMENSIONS IN MM [INCH]
- GENERAL TOLERANCE: X.X=±0.4
X.XX=±0.25
- TERMINAL NUMBERS FOR REF ONLY
- ▲ PLATING MATERIAL: SILVER
- RATING: 5 AMPS @ 120VAC OR 28VDC
2 AMPS @ 250VAC
- ELECTRIC LIFE: 40,000 make-and-break cycles at full load. (C)
- INSULATION RESISTANCE: 1,000 Mega-ohm min.
- DIELECTRIC STRENGTH: 1,000 V RMS @sea level.
- OPERATING TEMP.: -30°C to 85°C
- ▲10. HARDWARE TO BE SHIPPED BULK
T100000 - HEXNUT - QTY 2
T100011 - LOCKWASHER - QTY 1
T100015 - LOCKRING - QTY 1
- ▲ DENOTES CRITICAL PARAMETER.



ISOMETRIC

D	15233	DIM WAS 8.40 NOW 8.89	9/1/05	PH
C	15200	CHANGES NOTED WITH REV. (C)	8/24/05	PH
B	14977	CHANGED MODEL TEXT	6/3/05	JB
A	14889	RELEASED FOR PRODUCTION	5/6/05	JB
REV	PCR NO	DESCRIPTION	DATE	BY

THE INFORMATION CONTAINED IN THIS DOCUMENT IS PROPRIETARY TO E-SWITCH AND IS NOT TO BE COPIED OR TRANSFERRED

E-SWITCH®

TITLE 100DP4T5B1M51QEH

SCALE	DATE	DR	DWG	REV
2:1	5/6/2005	JB	ST106001	D