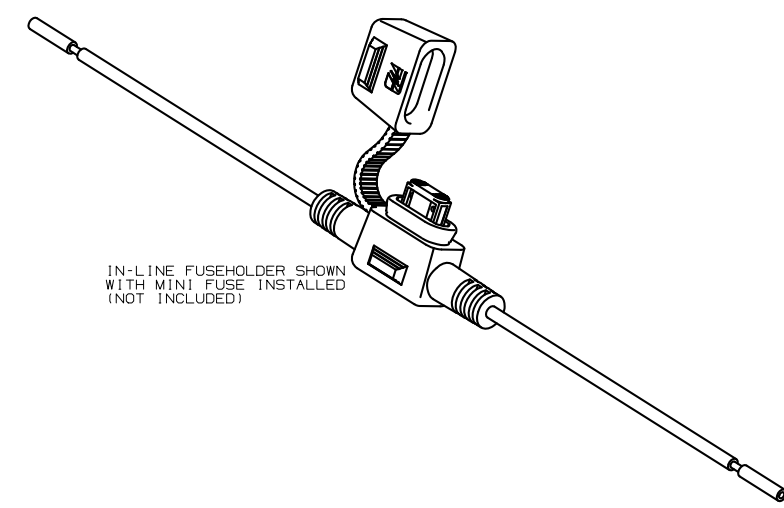
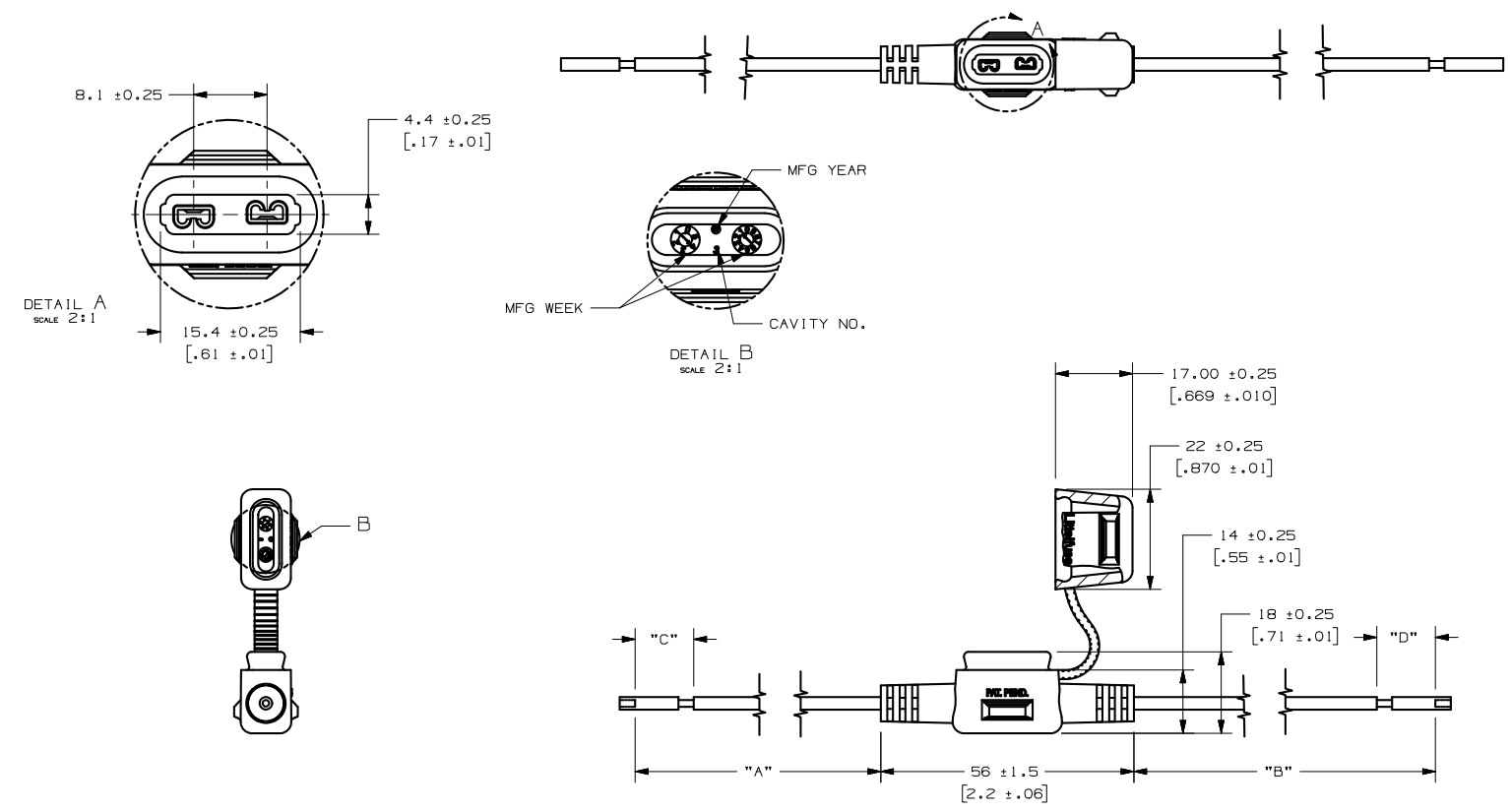


PART NUMBER	"A"	"B"	"C"	"D"	LEAD "A" COLOR	LEAD "B" COLOR
OFHM0002ZXJ	94±5 [ 3.70±.2 ]	94±5 [ 3.70±.2 ]	13±2 [ .51±.08 ]	13±2 [ .51±.08 ]	ORANGE	ORANGE
OFHM0002ZXJA	93.5±3 [ 3.681±.12 ]	93.5±3 [ 3.681±.12 ]	12±2 [ .472±.08 ]	6±2 [ .236±.08 ]	RED	ORANGE
OFHM0002ZXJB	167±3 [ 6.575±.12 ]	167±3 [ 6.575±.12 ]	8±2 [ .315±.08 ]	17±2 [ .67±.08 ]	ORANGE	RED
OFHM0002ZXJC	467±6.4 [ 18.386±.25 ]	127±3 [ 5.0±.12 ]	5.5±2 [ .22±.08 ]	15.88±2 [ .625±.08 ]	ORANGE	RED
OFHM0002ZXJD	183.8±5 [ 7.236±.20 ]	183.8±5 [ 7.236±.20 ]	14.2±2 [ .56±.08 ]	14.2±2 [ .56±.08 ]	ORANGE	ORANGE
OFHM0002ZXJE	203.14±5 [ 7.998±.20 ]	203.14±5 [ 7.998±.20 ]	N/A	N/A	ORANGE	ORANGE
OFHM0002ZXJF	60±5 [ 2.362±.20 ]	60±5 [ 2.362±.20 ]	6±2 [ .236±.08 ]	6±2 [ .236±.08 ]	ORANGE	ORANGE

LTR	DATE	REVISION	CHK	APD
A	03/29/07	63207 - RELEASE	BRK	
B	06/06/07	85498D - CHG TOL FROM ±1 TO ±1.5, CHG NOTE 6	BRK	
C	07/24/07	85549D - CHG TO CHARTED DRAWING, HOUSING HEIGHT TO 18.0 AND STRIP TOLERANCE TO ±2	BRK	
D	08/15/07	000138ER - ADD OFHM0002ZXJA, OFHM0002ZXJB, AND OFHM0002ZXJC, BRK		
E	11/02/07	000283EC-CHG. STRIP TOL FOR ZXJA-ZXJC, CHG DIM "B" FOR ZXJC TO 127mm GMB		
F	09/19/08	000488ER-RELEASE OFHM0002ZXJD AND OFHM0002ZXJE GMB		
G	12/22/08	000582ER-RELEASE OFHM0002ZXJF GMB		



IN-LINE FUSEHOLDER SHOWN WITH MINI FUSE INSTALLED (NOT INCLUDED)

- NOTES:
- HOLDER MATERIAL: BLACK TPV 251 80W 232
  - CONTACTS: C194 COPPER ALLOY: TIN-PLATED
  - WIRE: ORANGE, 12 AWG STRANDED COPPER, 125°C RATED, GXL WIRE
  - CRIMP: MUST MEET SAE/J562 Z1 STANDARD
  - RATING: MAX. 30A, 32Vdc
  - FUSEHOLDERS SHOULD NOT BE PLACED UNDER TENSION IN FINAL APPLICATION
  - MAX TEMPERATURE 125°C

UNLESS OTHERWISE SPECIFIED, DIMENSIONS ARE IN MILLIMETERS. DIMENSIONS IN BRACKETS [ ] ARE INCHES.			
UNLESS OTHERWISE SPECIFIED, DIMENSIONS DO NOT INCLUDE PLATING.			
⊙	DENOTES CRITICAL CHARACTERISTICS.		
CPK	DENOTES CPK DIMENSIONS, -MINIMUM CPK VALUE		
ST	DENOTES A CHARACTERISTIC THAT PROVIDES AN INDICATION OF PROCESS PERFORMANCE. PROCEDURE FOR MEASUREMENT AND TRACKING TO BE DEFINED IN LITTELFUSE INSPECTION INSTRUCTIONS		
CP	DENOTES CP DIMENSIONS, -MINIMUM CP VALUE MUST BE WITHIN THE DIMENSIONAL LIMITATIONS SHOWN ON DRAWING AND INITIALLY LOCATED TO ALLOW FOR MAXIMUM TOOL LIFE		
COPIES TO MATL SPEC			
SEE NOTES			
1	9	18	
2	10	19	
3	12	20	
4	13	21	DRW BRK
5	14	23	DATE 03/29/07
6	15	33	SCALE 1:1
7	16	43	CHK DATE
8	17	53	SUPER DR
			FINISH GOOD WT
			GRAMS/PIECE
TOLERANCE UNLESS OTHERWISE SPECIFIED			
ONE PLACE DEC +/- .3		THREE PLACE DEC +/- .100	
TWO PLACE DEC +/- .15		ANGULAR +/- 1°	
3RD ANGLE PROJECTION	TITLE	MINI IN-LINE FUSEHOLDER	
		REVISION	DRWG. NO.
		G	OFHM0002ZXJ
OUTLINE			
METRIC			
Littelfuse		90016	

CAD GENERATED DRAWING - NO PENCIL CHANGES ALLOWED