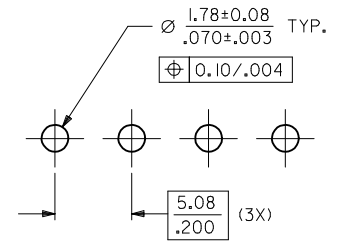
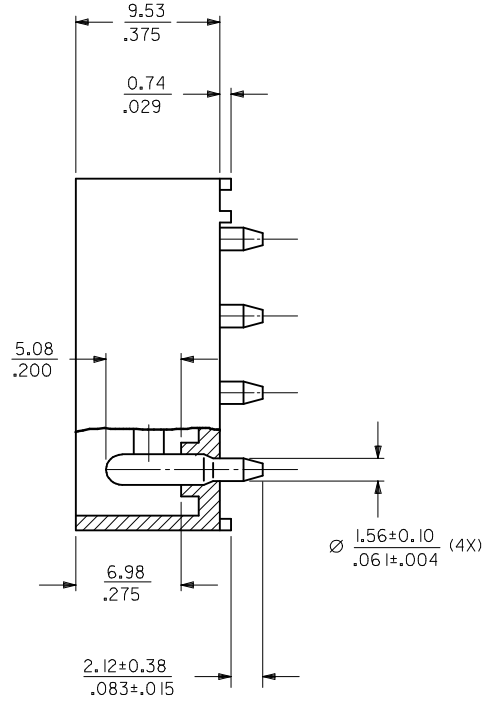
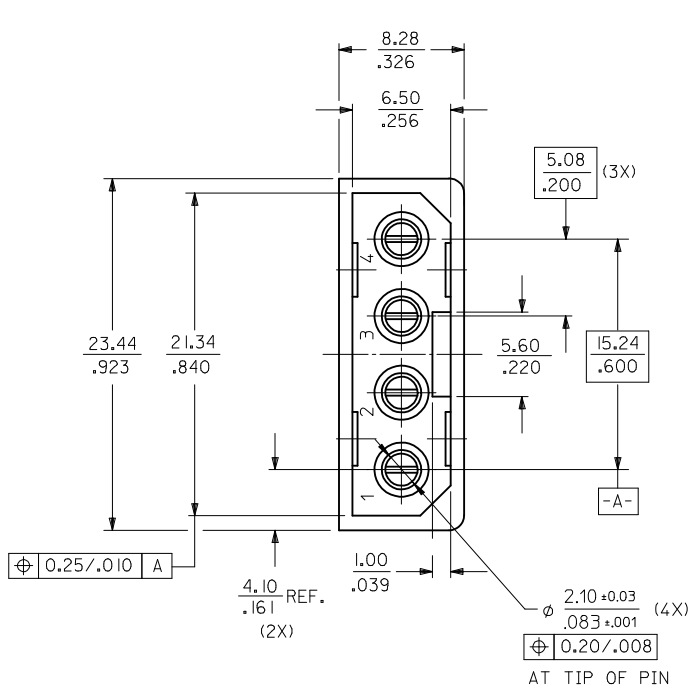


MAT'L NO.	ENG NO.
15-24-4557	A-8981-4V4-LF



RECOMMENDED PCB HOLE LAYOUT

NOTES :

1. PLATING
POSTPLATE 0.00254/0.000100 MIN. TIN
OVER 0.00127/0.000050 MIN. NICKEL OVERALL.
2. PART TO MATE WITH HOUSING 8981-4P2
AND TERMINAL 8980-3*.
3. PRODUCT SPEC PS-8981-4V4/4R1-P APPLIES.
4. MATERIAL:
HOUSING - PCT, GLASS FILLED, UL94V-0
COLOR BLACK
TERMINAL - PHOS BRONZE

ADD CKT INDICATION EC NO: S2009-0836 DRWN:SKANG 2009/05/08 CHKD:ATSEE 2009/05/08 APPR:MLONG 2009/05/11	REV DESCRIPTION	QUALITY SYMBOLS	GENERAL TOLERANCES (UNLESS SPECIFIED)	DIMENSION STYLE	SCALE	DESIGN UNITS	THIRD ANGLE PROJECTION	
		$\nabla=0$ $\square=0$	mm INCH 4 PLACES ± --- ± --- 3 PLACES ± --- ± .008 2 PLACES ± 0.20 ± --- 1 PLACE ± --- ± --- ANGULAR ± 3 °	MM/IN	NTS	METRIC		
			DRAFT WHERE APPLICABLE MUST REMAIN WITHIN DIMENSIONS	DRAWN BY DATE	TITLE	POWER CONNECTOR, 4 CKTS VERTICAL MOUNT		
		D1		CHECKED BY DATE	MOLEX INCORPORATED			DOCUMENT NO.
				APPROVED BY DATE	SD-8981-4V4			1 OF 1
				MATERIAL NO.	THIS DRAWING CONTAINS INFORMATION THAT IS PROPRIETARY TO MOLEX INCORPORATED AND SHOULD NOT BE USED WITHOUT WRITTEN PERMISSION			