

REFERENCE SPECIFICATIONS

-NFC 93425 (in compliance with HE 508)

PHYSICAL CHARACTERISTICS

- INSULATOR MATERIAL: THERMOSET UL94V0
- CONTACT MATERIAL: BRASS
GOLD OVER NICKEL
- ACCESSORIES: BRASS
Cadmium plated, yellow passivation
- SHELLS: STEEL
Cadmium plated, yellow passivation

ELECTRICAL CHARACTERISTICS

- NOMINAL CURRENT: 7.5A
- CONTACT RESISTANCE: <= 7.3 m ohms
- CONTACT/CONTACT : >=1000 V
- CONTACT/GROUND : >=1200 V
- INSULATION RESISTANCE: >=5000 MOhms

ENVIRONMENTAL CHARACTERISTICS

- CLIMATIC CATEGORY: 55/155/56
TEMPERATURE RANGE -55°C TO +155°C
DAMP HEAT STEADY STATE 56 DAYS
SALT SPRAY 48 HOURS

MECHANICAL CHARACTERISTICS

- RETENTION AGAINST TORQUE: - Threaded insert: 0.7 N.m minimum
- Female screw : 0.5 N.m minimum

DBML25S043N

Series

Shell size: **E A B C D**
see sheet 2

Front accessory definition
see sheet 2

- Blank** :without accessory
- F** :floating mounting
- L** :threaded insert M3
- O** :threaded insert UNC 4-40
- V** :female screw UNC 4-40

Contact number (see sheet 2)
9,15,25,37,50

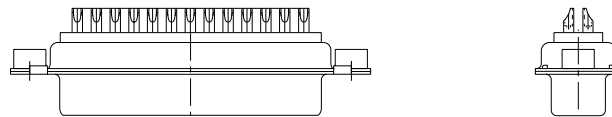
Contacts

- S** :Socket

Plating

- Blank** :solder bucket 500 matings/unmatings
- 043** :solder bucket 500 matings/unmatings
for harsh environment

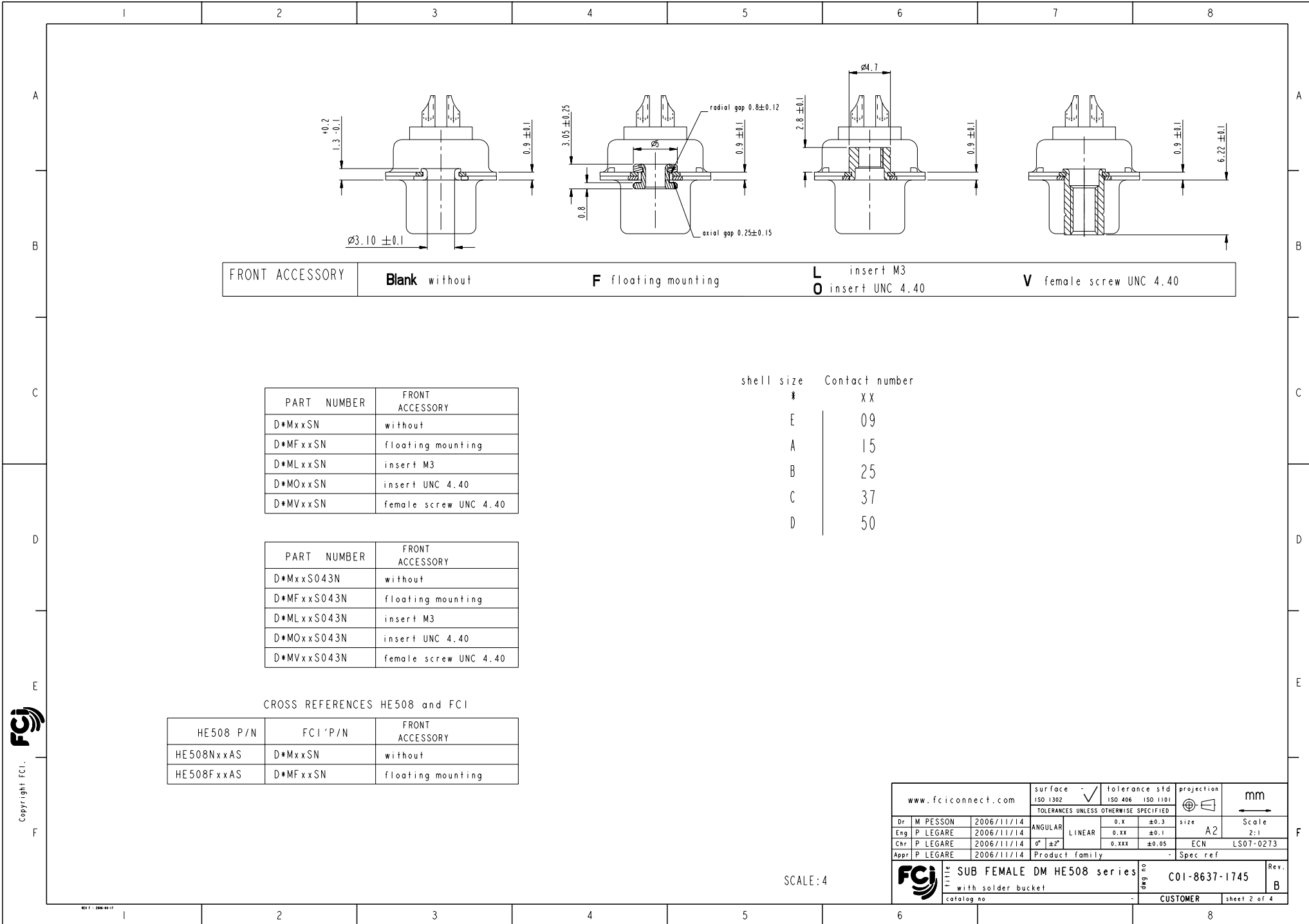
Obligatory for HE508



25 WAY for Example

rev	ecn no	dr	date
A	LS06-0174	MPE	2006/11/14
B	LS07-0273	MPE	2007/10/30
-	-	-	-
-	-	-	-
-	-	-	-
-	-	-	-

www.fciconnect.com		surface	tolerance std	projection	mm
		ISO 1302	ISO 406 ISO 1101	⊕	←→
		TOLERANCES UNLESS OTHERWISE SPECIFIED		size	Scale
Dr	M PESSON	2006/11/14	ANGULAR	0.X ±0.3	A2 2:1
Eng	P LEGARE	2006/11/14	LINEAR	0.xx ±0.1	
Chr	P LEGARE	2006/11/14	0° ±2'	0.xxx ±0.05	ECN LS07-0273
Appr	P LEGARE	2006/11/14	Product family		Spec ref
SUB FEMALE DM HE508 series with solder bucket				ang no C01-8637-1745	Rev. B
catalog no				CUSTOMER	sheet 1 of 4



FRONT ACCESSORY	Blank without	F floating mounting	L insert M3 O insert UNC 4.40	V female screw UNC 4.40
-----------------	----------------------	----------------------------	--	--------------------------------

PART NUMBER	FRONT ACCESSORY
D*MxxSN	without
D*MFxxSN	floating mounting
D*MLxxSN	insert M3
D*MOxxSN	insert UNC 4.40
D*MVxxSN	female screw UNC 4.40

PART NUMBER	FRONT ACCESSORY
D*MxxS043N	without
D*MFxxS043N	floating mounting
D*MLxxS043N	insert M3
D*MOxxS043N	insert UNC 4.40
D*MVxxS043N	female screw UNC 4.40

shell size	Contact number
#	XX
E	09
A	15
B	25
C	37
D	50

CROSS REFERENCES HE508 and FCI

HE508 P/N	FCI P/N	FRONT ACCESSORY
HE508NxxAS	D*MxxSN	without
HE508FxxAS	D*MFxxSN	floating mounting

SCALE: 4

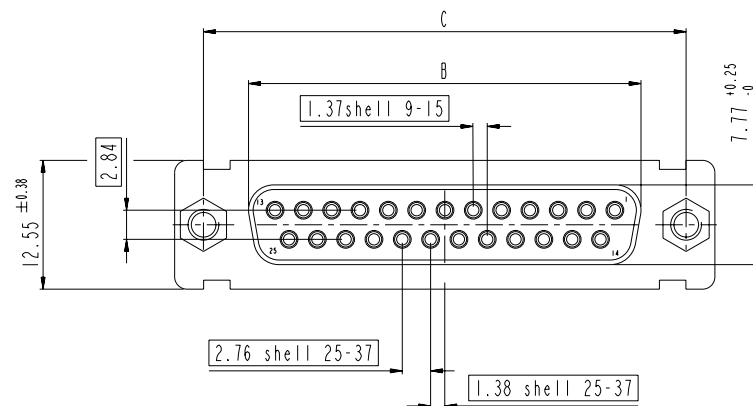
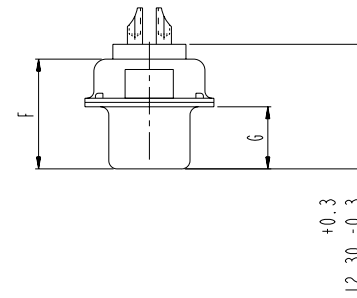
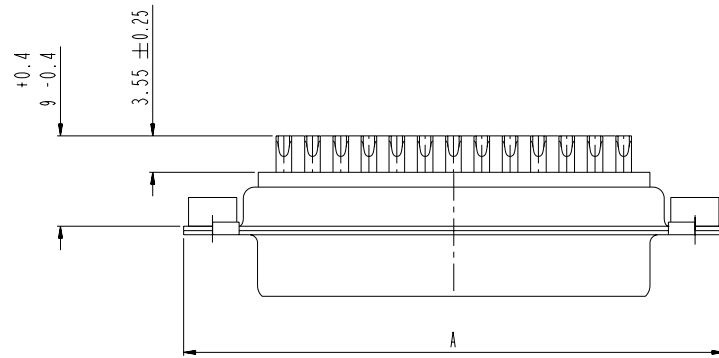
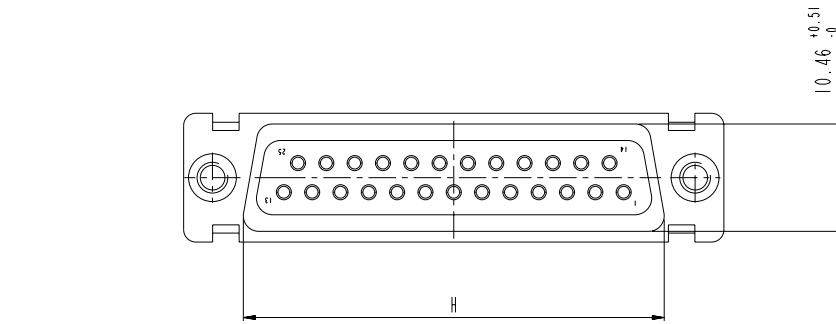
www.fciconnect.com		surface ISO 1302	tolerance std ISO 406 ISO 1101	projection mm
		TOLERANCES UNLESS OTHERWISE SPECIFIED		
Dr	M PESSON	2006/11/14	ANGULAR	0.X ±0.3
Eng	P LEGARE	2006/11/14	LINEAR	0.XX ±0.1
Chr	P LEGARE	2006/11/14	0° ±2'	0.XXX ±0.05
Appr	P LEGARE	2006/11/14	Product family	- Spec ref
SUB FEMALE DM HE508 series with solder bucket catalog no				Rev. no C01-8637-1745 B
			CUSTOMER	sheet 2 of 4

Copyright FCI

DIMENSIONS FOR SHELL E.A.B.C

Dimensions are in millimeters

Shell size	Number of contacts	A ^{+0.76} ₋₀	B ^{+0.25} ₋₀	C ± 0.12	F ^{+0.57} ₋₀	G ^{+0.25} ₋₀	H ^{+0.51} ₋₀
E	09	30.43	16.21	24.99	10.64	6.05	19.02
A	15	38.76	24.54	33.32	10.64	6.05	27.25
B	25	52.65	38.25	47.04	10.64	6.05	41.02
C	37	68.94	54.71	63.50	10.64	6.05	57.45



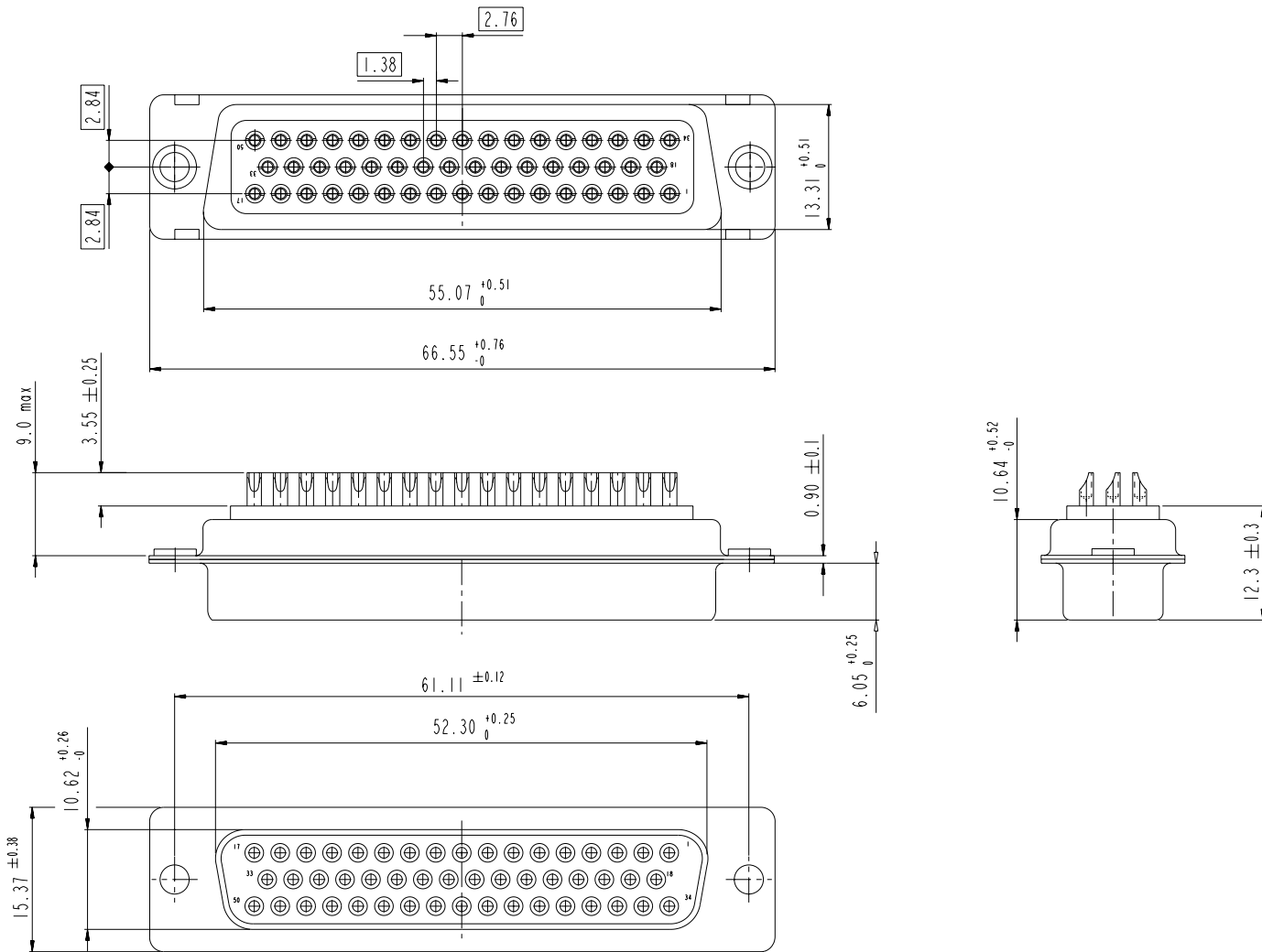
scale 3

www.fciconnect.com		surface <input checked="" type="checkbox"/> ISO 1302	tolerance std <input checked="" type="checkbox"/> ISO 406	projection <input checked="" type="checkbox"/> ISO 1101	mm
		TOLERANCES UNLESS OTHERWISE SPECIFIED			
Dr M PESSON	2006/11/14	ANGULAR	0.X	± 0.3	size A2
Eng P LEGARE	2006/11/14	LINEAR	0.XX	± 0.1	Scale 2:1
Chr P LEGARE	2006/11/14	$d^{\circ} \pm z^{\circ}$	0.XXX	± 0.05	ECN LS07-0273
Appr P LEGARE	2006/11/14	Product family	- Spec ref		
FCI SUB FEMALE DM HE508 series		dwg no	C01-8637-1745		Rev. B
with solder bucket		catalog no	CUSTOMER		sheet 3 of 4



Copyright FCI.

DIMENSIONS FOR SHELL SIZE D (50 CONTACTS)



Copyright FCI. **FCI**

scale 3

www.fciconnect.com		surface	ISO 1302	tolerance std	ISO 406	ISO 1101	projection	mm
		TOLERANCES UNLESS OTHERWISE SPECIFIED						
Dr	M PESSON	2006/11/14	ANGULAR	0.X	±0.3	size	A2	Scale
Eng	P LEGARE	2006/11/14	LINEAR	0.XX	±0.1			2:1
Chr	P LEGARE	2006/11/14	0° ±2°	0.XXX	±0.05	ECN	LS07-0273	
Appr	P LEGARE	2006/11/14	Product family			Spec ref		
FCI		SUB FEMALE DM HE508 series			dwg no	C01-8637-1745		Rev.
with solder bucket								B
catalog no					CUSTOMER	sheet 4 of 4		