



PRODUCT DATASHEET

Tina series

last update 22/6/2016

DETAILS

Product Number	CP12678_TINA2-D
Family	Tina
Type	Assembly
Color	black
Diameter	16,1 mm
Height	9,65 mm
Style	round
Optic Material	PMMA
Holder Material	
Fastening	glue
Status	production ready
ROHS Compliant	Yes
Date Updated	22/06/2016



OPTICAL PROPERTIES

LED	Viewing Angle	Light Beam	Efficiency	cd/lm	Connector
XP-G	16 deg	Diffuser	91 %	7.000	-
XT-E	16 deg	Diffuser	89 %	7.000	-

D

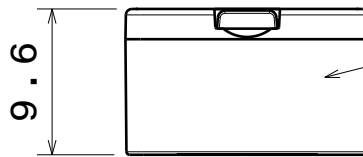
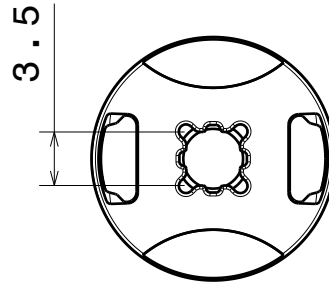
C

B

A

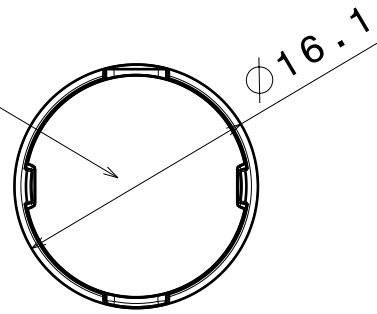


Isometric view
Scale: 1:1



Holder

Lens



Materials:
Lens PMMA
Holder PC, Black

Tolerances for dimensions:
0-20mm tolerance value $\pm 0.1\text{mm}$
21-45mm tolerance value $\pm 0.2\text{mm}$
46-90mm tolerance value $\pm 0.3\text{mm}$
91-100mm tolerance value $\pm 0.4\text{mm}$
101-mm tolerance value $\pm 0.5\text{mm}$

This drawing is our property.
It can't be reproduced
or communicated without
our written agreement.



Ledil Oy
Salorankatu 10
FIN 24240 SALO
Finland

DRAWING TITLE

Datasheet Tina2 XP Glue Assy

DRAWN BY

pv

DATE

11.04.2012

CHECKED BY

sn

DATE

12.03.2012

SIZE

A4

DRAWING NUMBER

-

REV

1

DESIGNED BY

pv

DATE

12.03.2012

SCALE

2:1

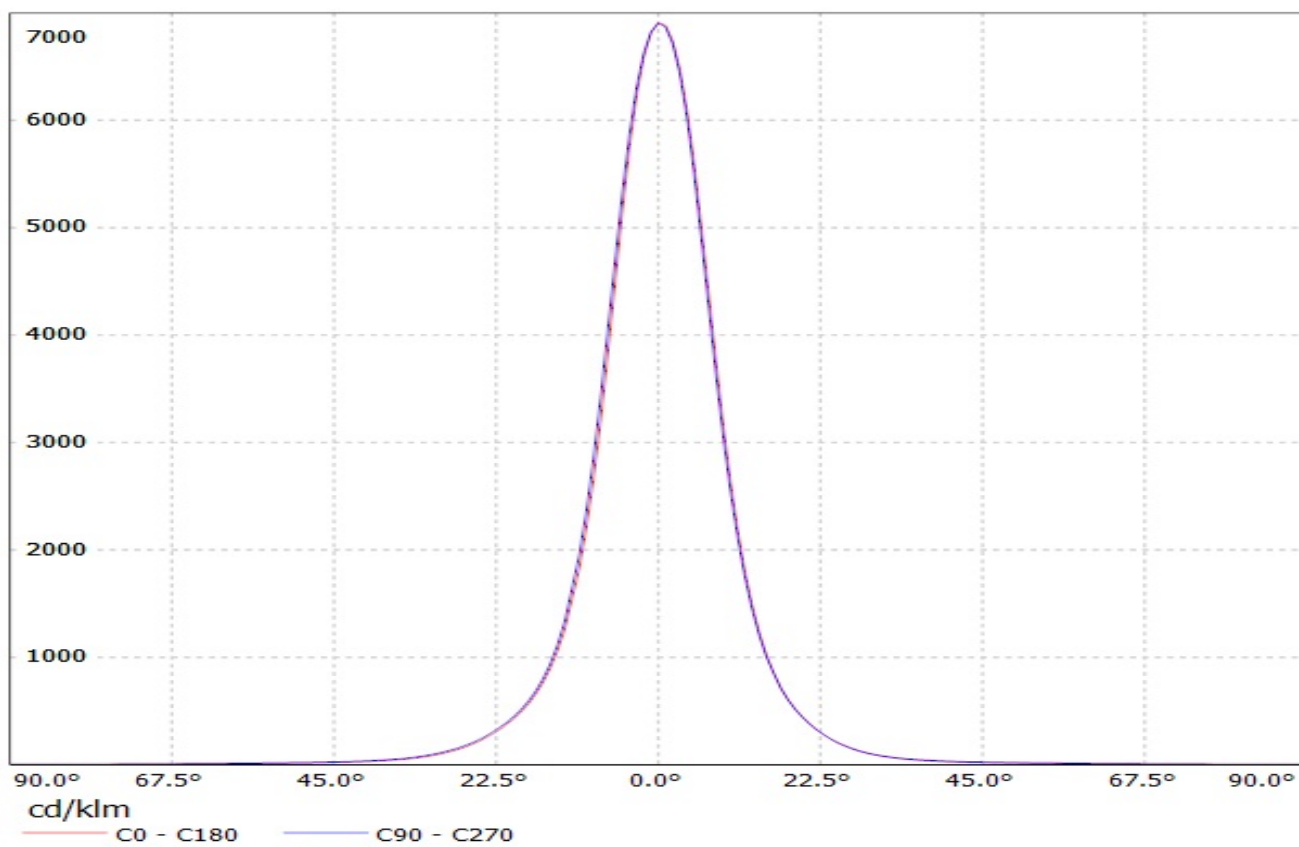
WEIGHT (g)

SHEET

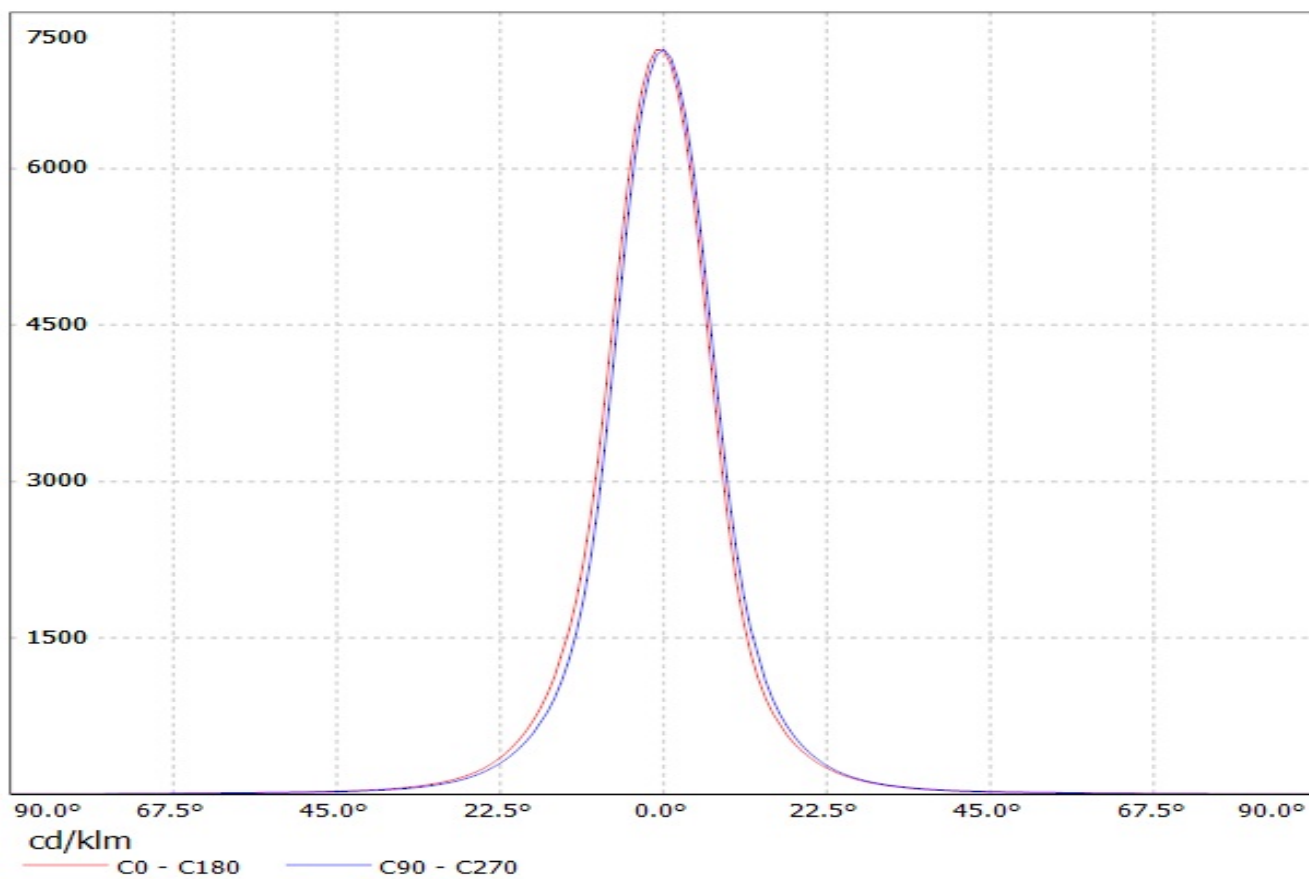
1/1

A

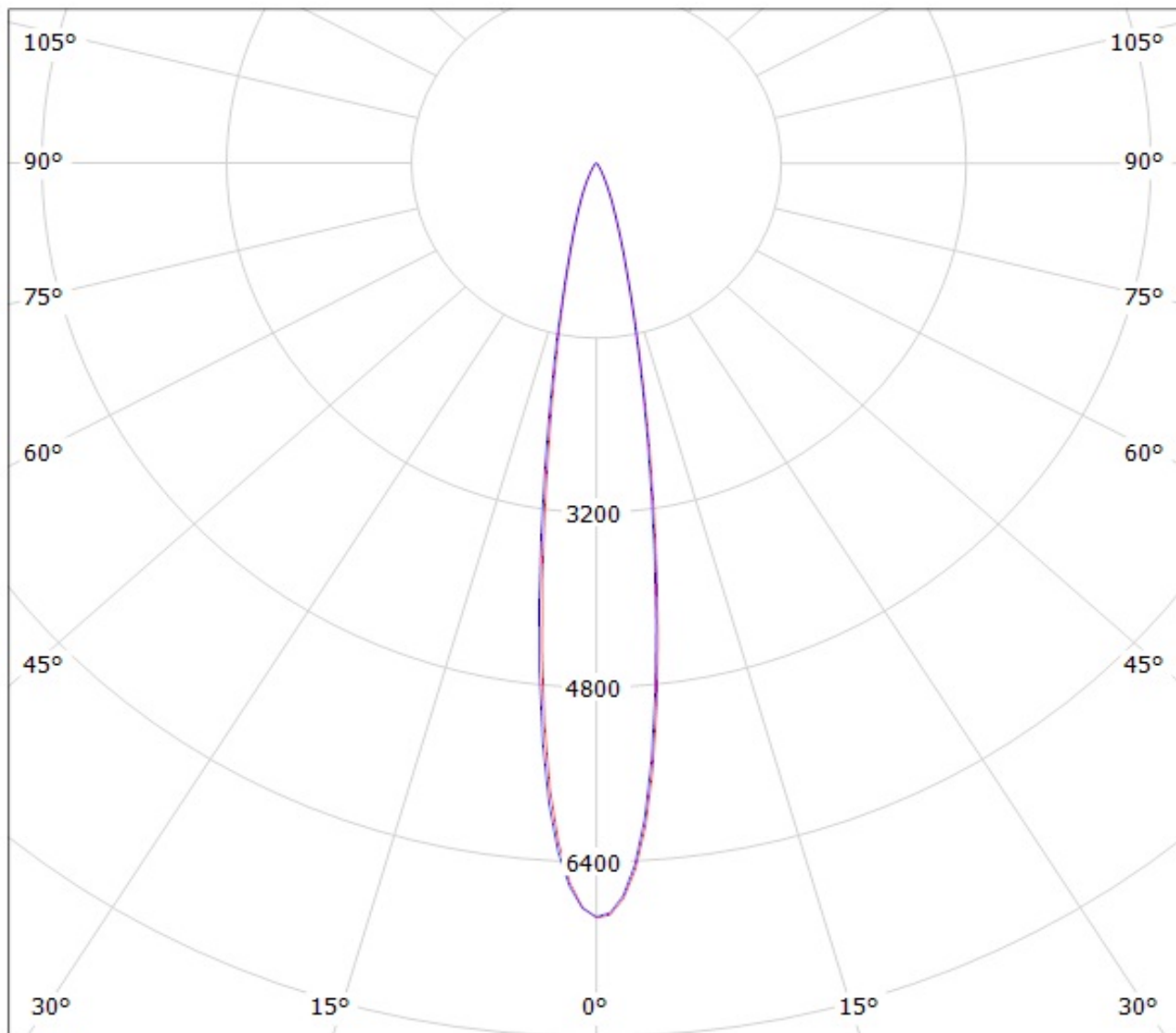
Luminaire: LEDIL OY CP12678_TINA2-D (XP-G) Efficiency=91%
Lamps: 1 x Cree XP-G (92lm@250mA)



Luminaire: LEDIL OY CP12678_TINA2-D (XT-E AWT) Efficiency=89%
Lamps: 1 x Cree XT-E AWT (113lm @ 250mA)



Luminaire: LEDIL OY CP12678_TINA2-D (XP-G) Efficiency=91%
Lamps: 1 x Cree XP-G (92lm@250mA)

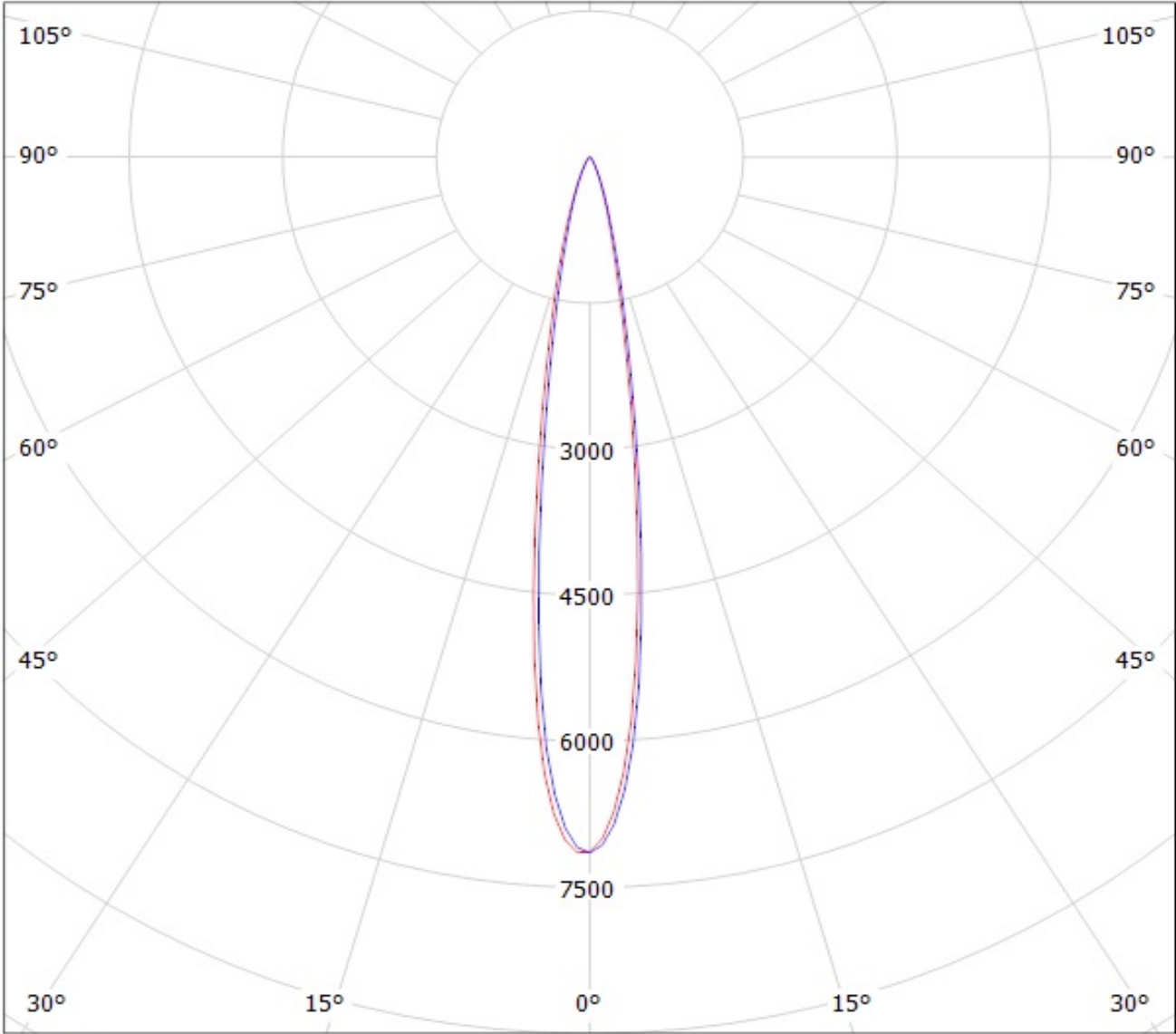


cd/klm

— C0 - C180

— C90 - C270

Luminaire: LEDIL OY CP12678_TINA2-D (XT-E AWT) Efficiency=89%
Lamps: 1 x Cree XT-E AWT (113lm @ 250mA)



cd/klm

— C0 - C180

— C90 - C270

NOTE: The typical divergence will be changed by different color, chip size and chip position tolerance. The typical total divergence is the full angle measured where the luminous intensity is half of the peak value.