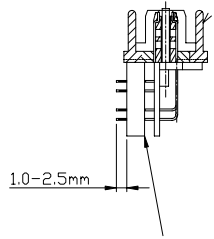
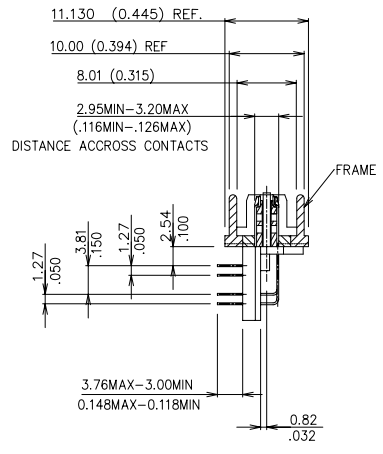


Tous droits strictement reserves. Reproduction ou communication a des tiers interdite sous quelque forme que ce soit sans autorisation ecrite du proprietaire. Propriete de c FCI. Droits de reproduction FCI.

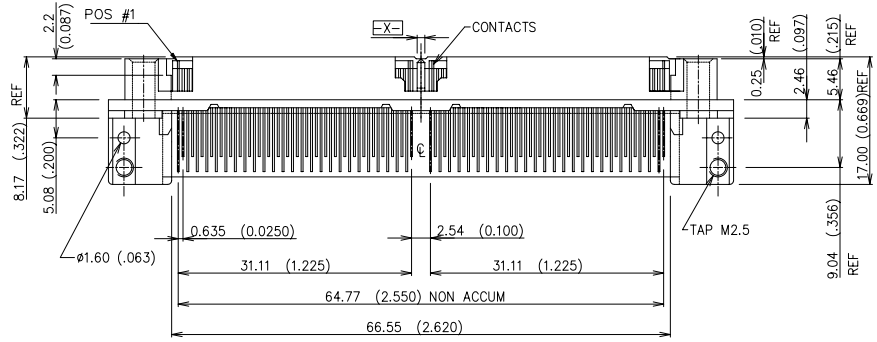
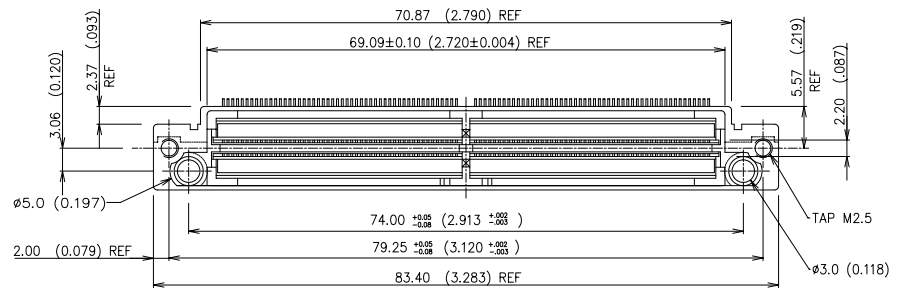
**FCI**

All rights strictly reserved. Reproduction or issue to third parties in any form whatever is not permitted without written authority from the proprietor. Property of FCI. Copyright FCI.

PRODUCT NO.	SCREW
10013357-001/001LF	2 PCS 94148-001 NEEDED FOR EACH 10013357-001, PUT INTO PACKING BOX



For application, move tail guide forward. Tail length is suggested to be in the range of 1.0~2.5mm



Note:  
Tail length is measured by gauge.

mat'l. code				tolerances unless otherwise specified			CUSTOMER COPY		<b>FCI</b>		www.fciconnect.com	
ltr	ecn no	dr	date	.X ±.3			projection		title			
A	T20322	BEER	11/04/02	.XX ±.13			MM		MICROPAX 200P RA PLUG			
B	T20350	BEER	12/06/02	.XXX ±.050			scale		product family MICROPAX			
C	N05-0209	PH	07/15/05	angles 0° ±2°			1:1		size dwg no			
				dr	BEER FU	11/04/02			code			
				enrg	BEER FU	11/04/02			-			
				chr	BEER FU	11/04/02			sheet			
				appd	PAUL WANG	11/04/02			1 of 2			
sheet	revision	C	C									
index	sheet	1	2									

ACAD

PDM: Rev:C

STATUS: Released  
 cage code  
 20526  
 Printed: Jul 22, 2010

Tous droits strictement reserves. Reproduction ou communication a des tiers interdite sous quelque forme que ce soit sans autorisation ecrite du proprietaire. Propriete de c FCI. Droits de reproduction FCI.

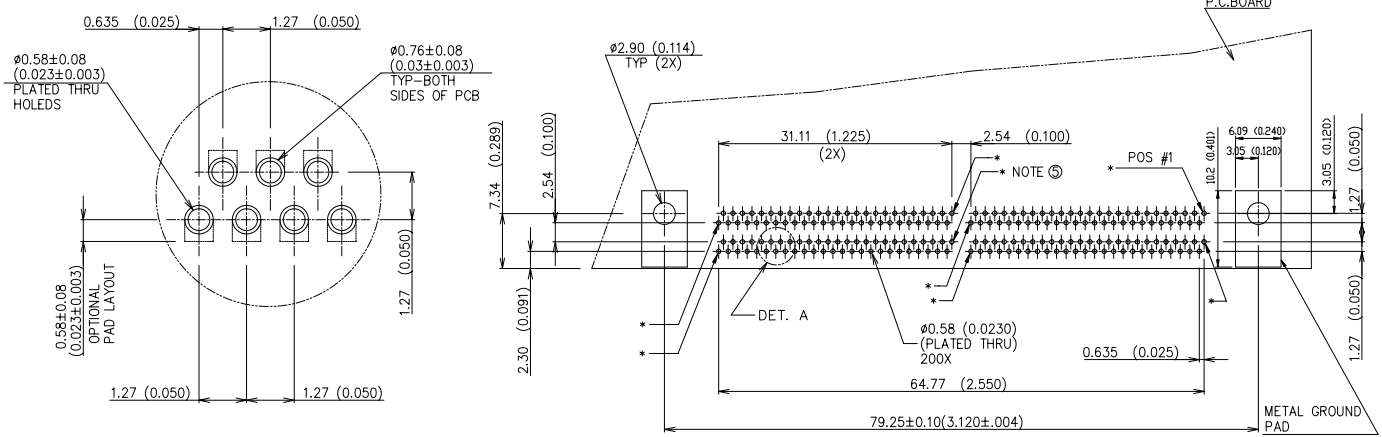
**A** FCI

All rights strictly reserved. Reproduction or issue to third parties in any form whatever is not permitted without written authority from the proprietor. Property of FCI. Copyright FCI.

**B**

PRODUCT NO.  
10013357-001/001LF

RECOMMENDED PC BOARD LAYOUT  
( FOR 2.4mm THK, PCB)



- NOTE:
1. ALL BOARD HOLES ARE  $\varnothing 0.15 / 0.006 \text{ (M)}$
  2. MATERIAL :
    - METAL FRAME : ZINC ALLOY #3
    - INSULATOR : HIGH TEMPERATURE ENGINEERING PLASTIC
    - CONTACT : BeCu -THK-.254 (.0100)
  3. PLATING :
    - SOLDER TAILS : 150  $\mu\text{m}$  / 3.81  $\mu\text{m}$  SNPB
    - CONTACT PLATING : UNDERPLATING NICKEL 50  $\mu\text{m}$  OVERALL GXT IN CONTACT AREA 30  $\mu\text{m}$  / 76  $\mu\text{m}$
  4. FRAME : 100  $\mu\text{m}$ -in OVERALL COPPER.
  5. "\*" REPRESENT LONG PIN AT FMLB FEATURE.
  6. P/N WITH SUFFIX 'LF' IS LEAD FREE P/N.  
SNPB PLATING IS CHANGED TO PURE TIN FOR LEAD FREE P/N
  7. PACKING STANDARD GS-14-920 WILL BE APPLIED FOR LEAD FREE P/N'S
  8. FOR LEAD FREE P/N'S, THE PRODUCT MEET EUROPEAN UNION DIRECTIVES AND OTHER COUNTRY REGULATION AS DESCRIBED IN GS-22-008
  9. FOR LEAD FREE P/N'S, THE HOUSING WILL WITHSTAND EXPOSURE TO 260°C PEAK TEMPERATURE FOR 40 SECONDS IN A CONVECTION, INFRARED OR VAPOR PHASE REFLOW OVEN.

mat'l. code				tolerances unless otherwise specified			CUSTOMER COPY		 www.fciconnect.com	
ltr	ecn no	dr	date	linear	.X ±.3			projection	title	
c					.XX ±.13				MICROPAX 200P RA PLUG	
					.XXX ±.050				product family MICROPAX	
				angles	0° ±2°			 MM scale 1:1 A4	code	
				dr	BEER FU	11/04/02	size		sheet	
				enr	BEER FU	11/04/02	dwg no			
				chr	BEER FU	11/04/02	10013357		2 of 2	
				appd	PAUL WANG	11/04/02				
sheet index	revision sheet									

**B**