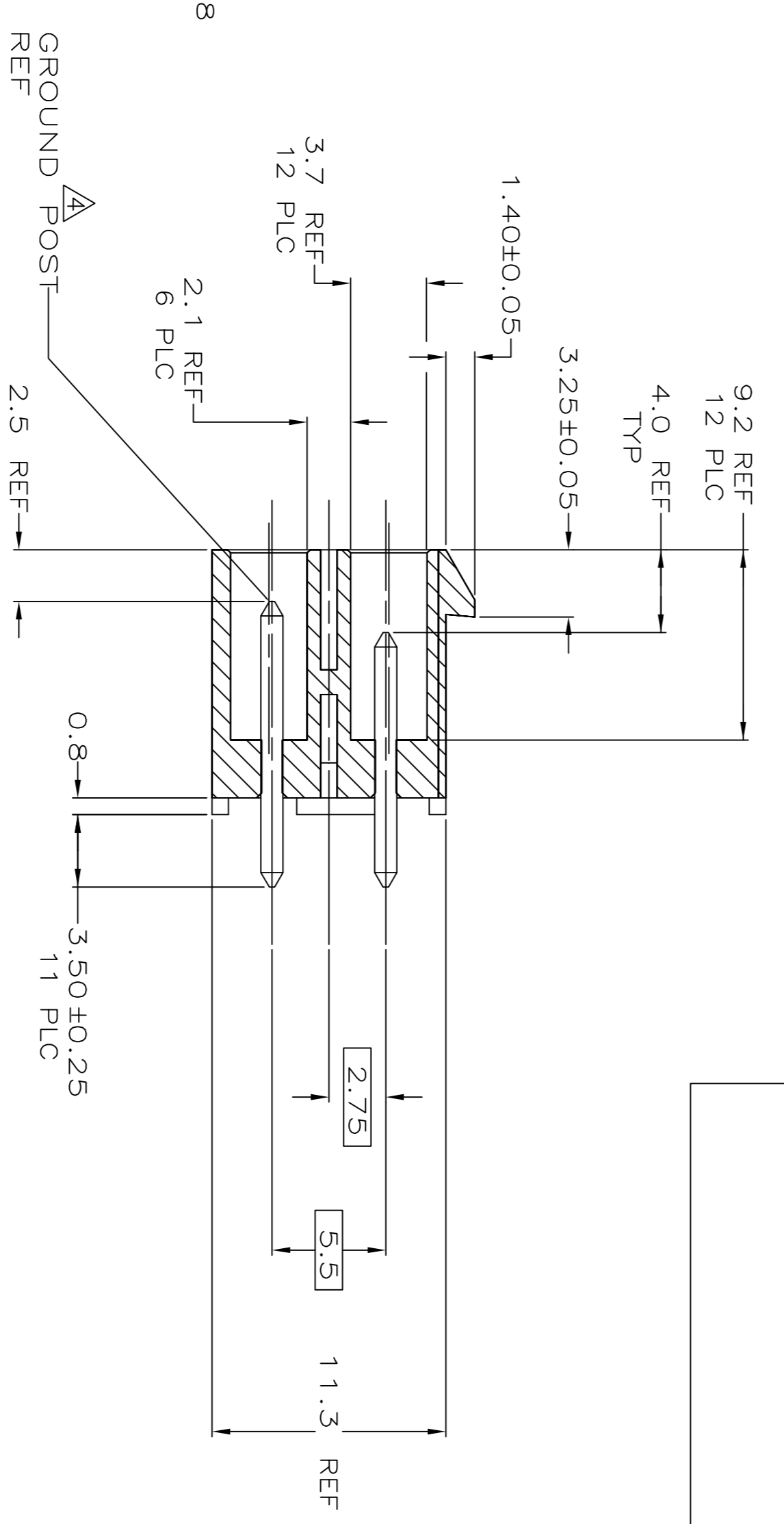
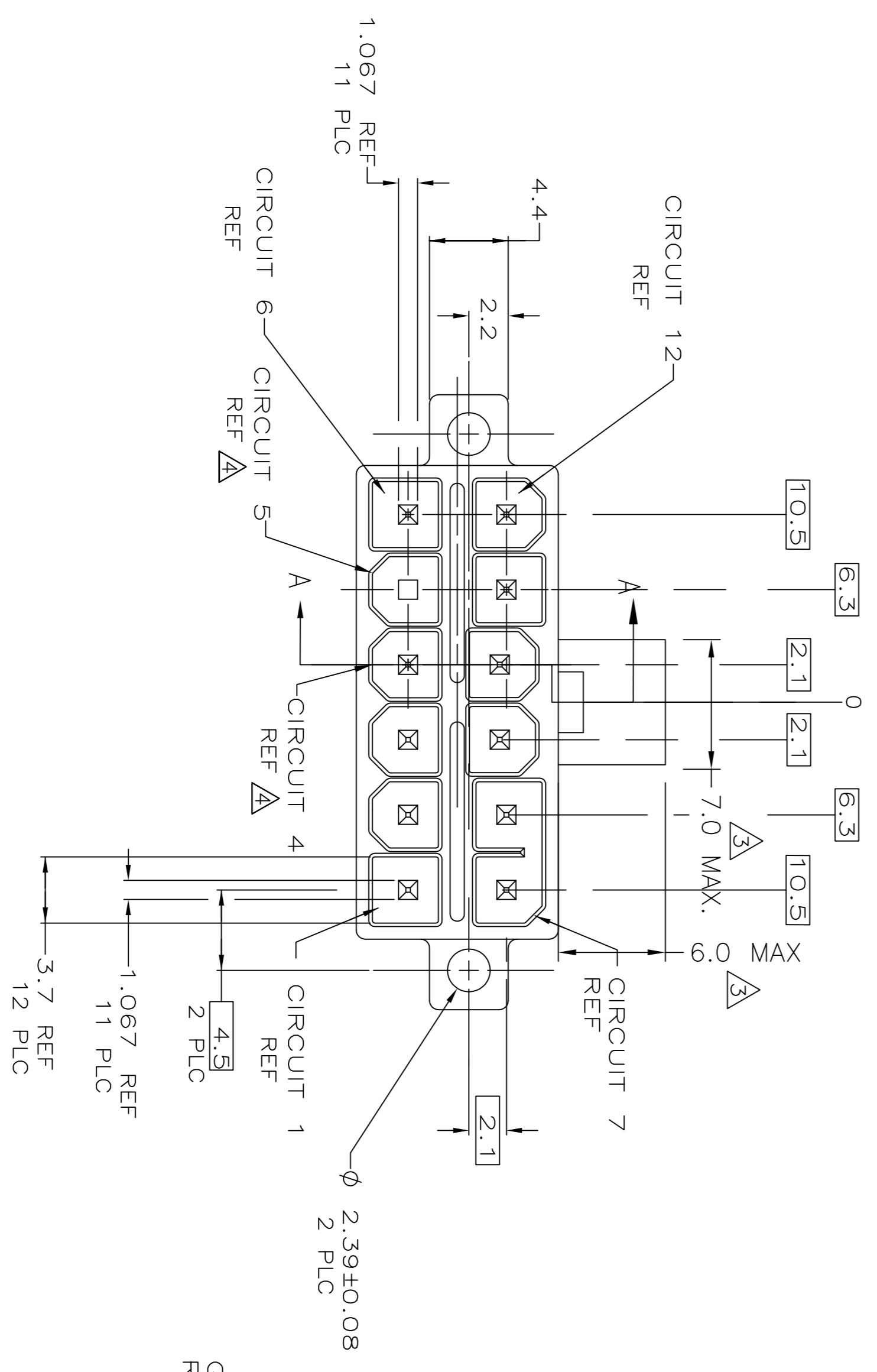


RECOMMENDED MOUNTING HOLE PATTERN FOR 1.78 MAX THICK P.C. BOARD COMPONENT SIDE SHOWN

- △ CONTACT: 0.00076 GOLD AT INTERFACE. 0.00254 MIN MATTE TIN ON SOLDER TAIL. 0.00127 MIN NICKEL UNDERPLATE ALL OVER
- 2. MATES WITH AMP-DUAC/PL PLUG RECEPTACLE 794156-1 AND ITS CONTACTS.
- △ CLEARANCE ENVELOPE FOR MATING PLUG RECEPTACLE LATCH.
- △ CONTACT GROUND POST LOCATED IN CIRCUIT 4, NO CONTACT IN CIRCUIT 5. OTHER POSTS STANDARD.
- △ HOLE SUPPORTING CIRCUIT 5 NOT REQUIRED WHEN USING P/N 2232521-1

PRELIMINARY



SECTION A-A

REV	DATE	DESCRIPTION	BY	CHKD
5	10/21/2013	INITIAL RELEASE	OL	SZ

MATERIAL	FINISH	MATERIAL	COLOR	PART NO
HIGH CONDUCTIVITY COPPER ALLOY	△1	PBT, UL94V-0	NATURAL(WHITE)	2232521-1

THIS DRAWING IS A CONTROLLED DOCUMENT. ESTE PLANO ES UN DOCUMENTO CONTROLADO.	DATE: 5/29/2013	REVISED
ORIGINATOR: SUNYI ZHAO	DATE: 5/29/2013	AMP-DUAC/PL
APPROVED: SUNYI ZHAO	DATE: 5/29/2013	AMP-DUAC/PL
DATE: 10/21/2013	DRAWING NO: 00779	SCALE: 4:1
CUSTOMER DRAWING/PLANO DE CLIENTE	SCALE: 4:1	SHEET 1 OF 1