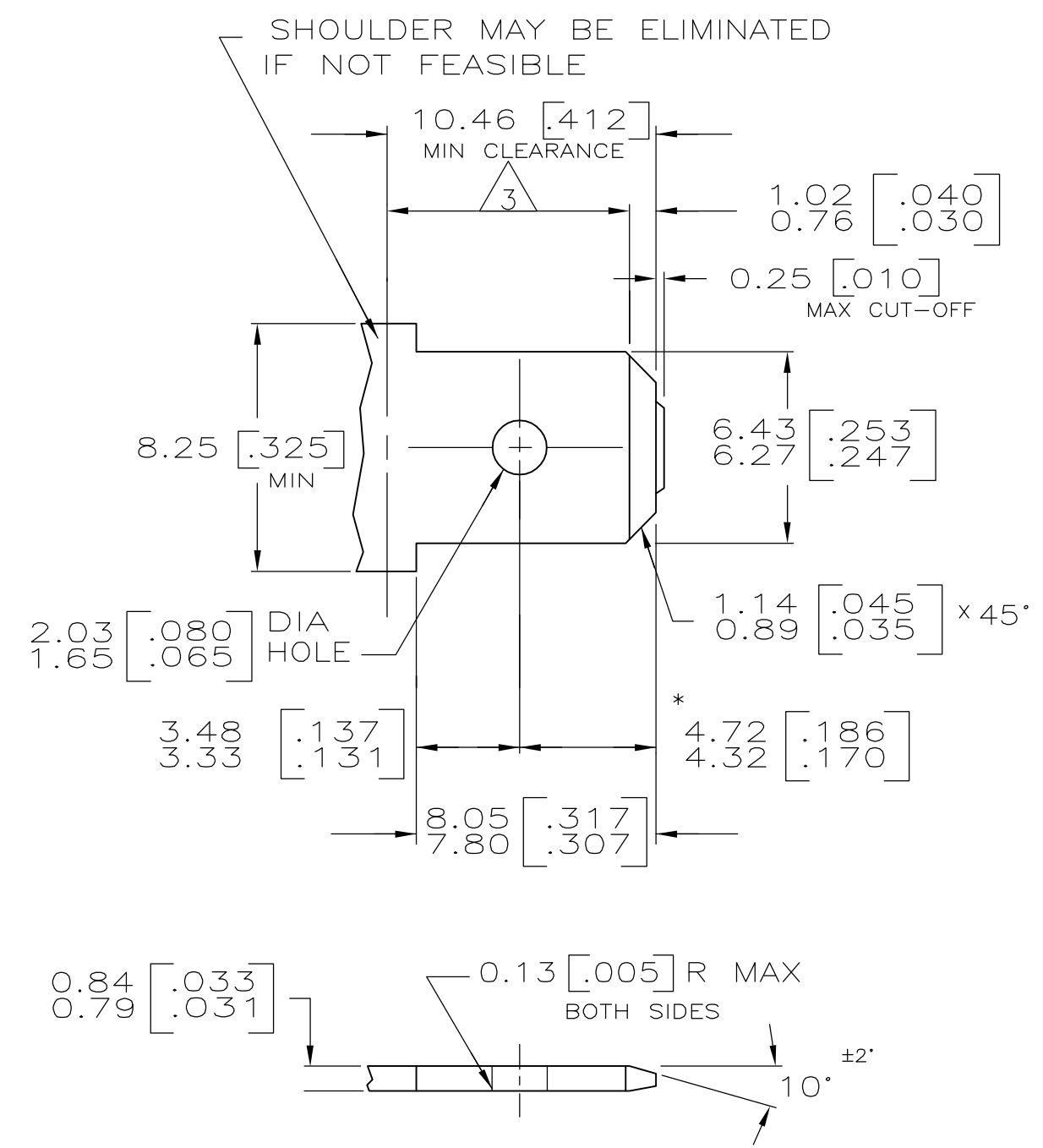
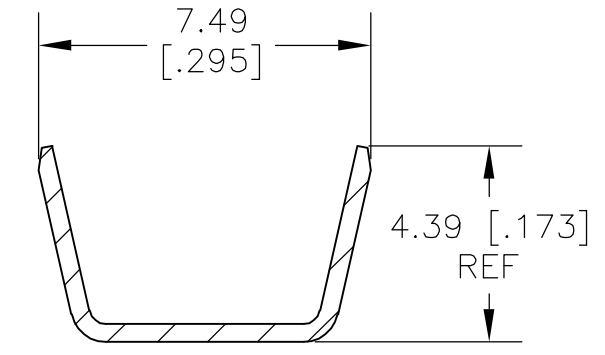
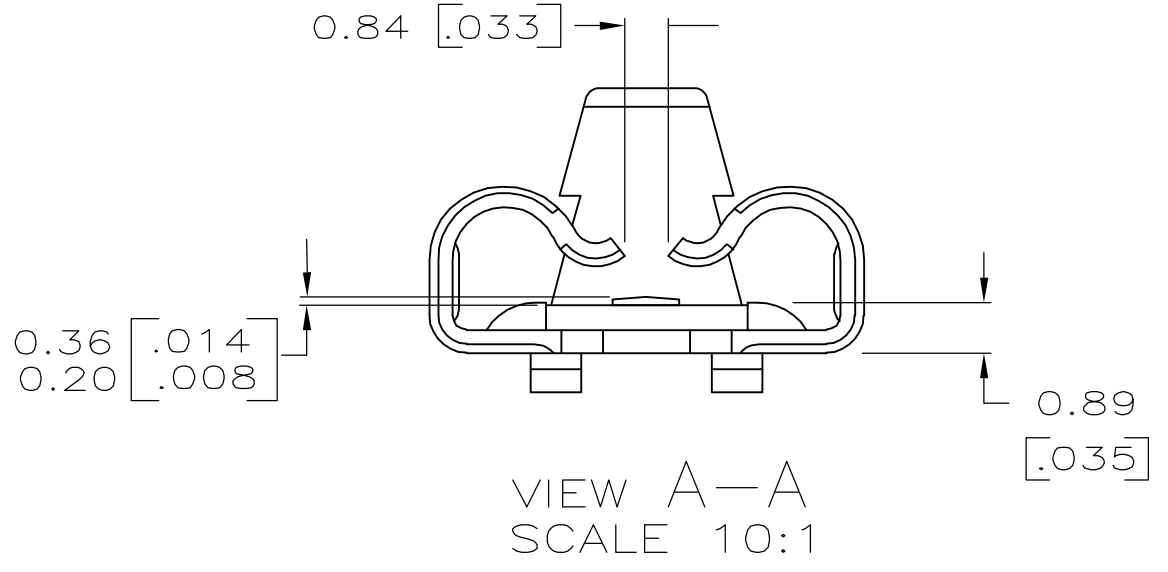
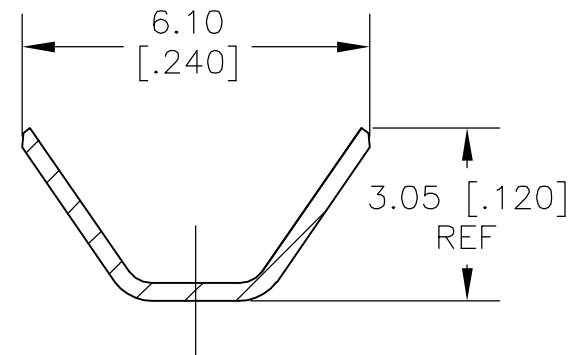
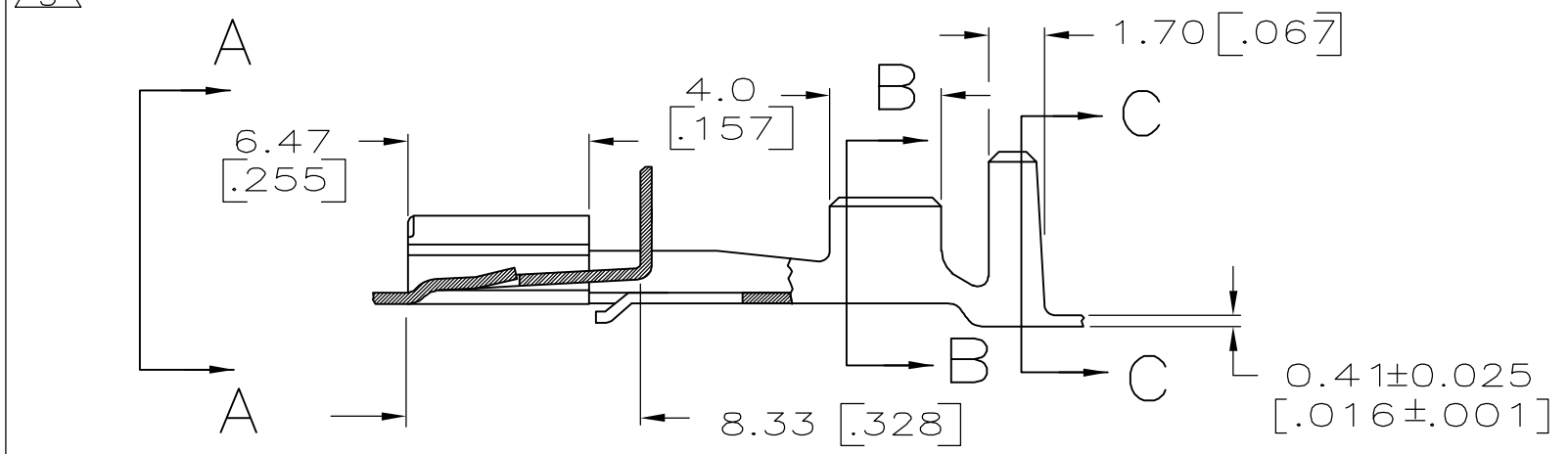
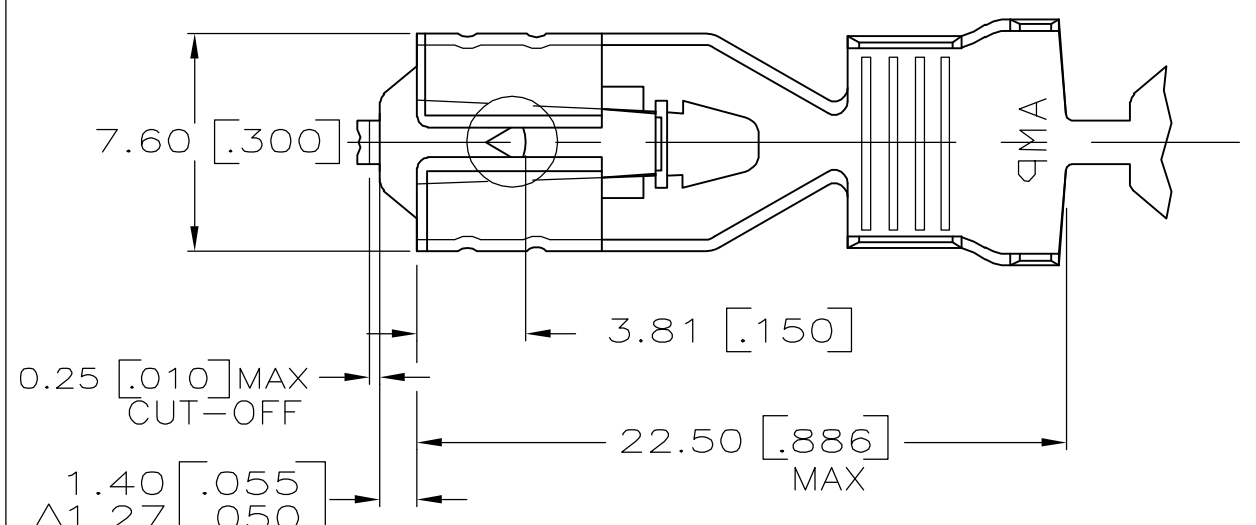


LOC	DIST	REVISIONS			
P	LTR	DESCRIPTION	DATE	DWN	APVD
AF	50	A1	REVISED PER ECR-06-020824	07SEP06	HMR EH

SUGGESTED MATING TAB



- 1 - MATL: 1/2H BRASS OR NICKEL PL STEEL.
 - 2 - NO BURRS PERMISSIBLE AT HOLE.
 - 3 - MUST BE FLAT WITHIN 0.076 [0.003] OVER THIS LENGTH.
 - 4 - TIN PLATING IS REQUIRED ON BRASS WHEN TERMINAL TEMP. IS OVER 225° F
 - 5 - HOLE MUST BE SYMMETRICAL ABOUT TAB \varnothing WITHIN 0.076 [0.003]
- * TO BE USED ONLY WHEN SHOULDER IS ELIMINATED.



- 1 DIMENSIONS IN BRACKETS ARE IN INCHES.
- 2 PRODUCT PROVIDED IN STRIP FORM, BREAKS MAY BE PRESENT.
- 3 THE 1.27-1.40 [0.050-.055] DIMENSION MUST BE MAINTAINED BY THE APPLICATOR CUT-OFF TO ENSURE THE PROPER LOCKING FUNCTION OF THE RECEPTACLE.
- 4 WIRE RANGE: #18-#16, TWO #18'S, OR TWO #20'S AWG.
- 5 INSULATION RANGE: 2.67-5.33mm² OR TWO AT 2.67mm² MAX. [0.105-.210 DIA OR TWO AT .105 MAX DIA].
- 6 PRELIMINARY - NOT FOR PRODUCTION.

TIN 0.002032 [0.000080] MIN	1742354-2
-	1742354-1
FINISH	PART NO.

THIS DRAWING IS A CONTROLLED DOCUMENT.		DWN M.S. FEHER 13OCT2005	Tyco Electronics Corporation Harrisburg, PA 17105-3608	
DIMENSIONS: mm [INCHES]		CHK E. HOWARD 13OCT2005	NAME RECEPTACLE, POSITIVE LOCK, .250 SERIES	
TOLERANCES UNLESS OTHERWISE SPECIFIED:		APVD E. HOWARD 13OCT2005	PRODUCT SPEC	
0 PLC	± -	APPLICATION SPEC		
1 PLC	± -	114-2074		
2 PLC	± 0.25 [0.010]	SIZE CAGE CODE DRAWING NO		
3 PLC	± -	A2 00779 G-1742354		
4 PLC	± -	RESTRICTED TO		
ANGLES	± -	WEIGHT		
MATERIAL	FINISH	CUSTOMER DRAWING		
H06 BRASS	SEE TABLE	SCALE 5:1 SHEET 1 of 1 REV A1		