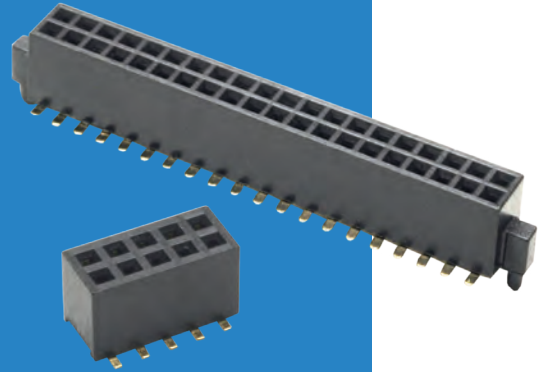


Archer Connectors – M50

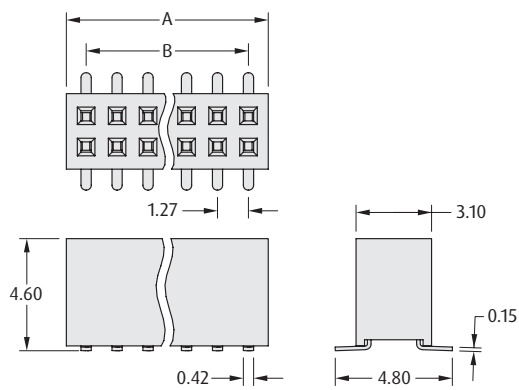
Female Vertical Surface Mount

- ❖ Locating pegs (posts) available to ensure correct positioning on the board.
- ❖ Alternative height connectors available on the following page.
- ❖ Contact technical@harwin.com for Tape and Reel options.
- ❖ Dual entry connector can be used as either top or bottom entry.



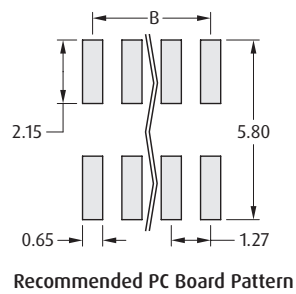
1.27mm (.050") PITCH

WITHOUT POST

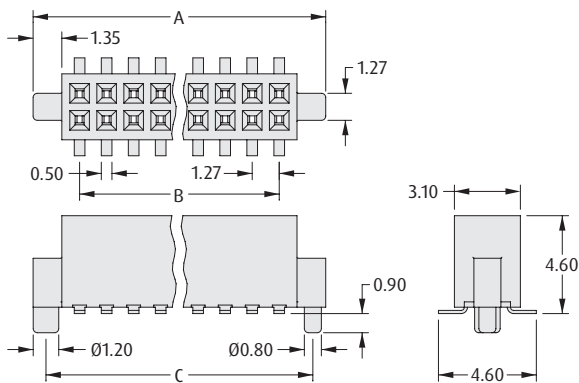


CALCULATION

A	$B + 1.62$
B	$1.27 \times (\text{No. of contacts per row} - 1)$

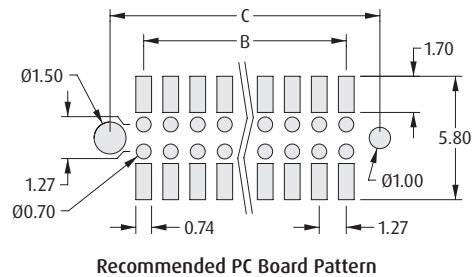


WITH POST, DUAL ENTRY



CALCULATION

A	$B + 4.37$
B	$1.27 \times (\text{No. of contacts per row} - 1)$
C	$B + 3.16$



HOW TO ORDER

M50 - 31 X XX XX

SERIES CODE

TYPE

0	Without Posts
1	With Posts

FINISH

42	Gold + Tin (With Posts)
45	Gold (Without Posts)

NO. OF CONTACTS PER ROW

03 to 50	Without Posts
05 to 12, 15, 20, 25, 30, 35, 40, 45, 50	With Posts

All dimensions in mm.