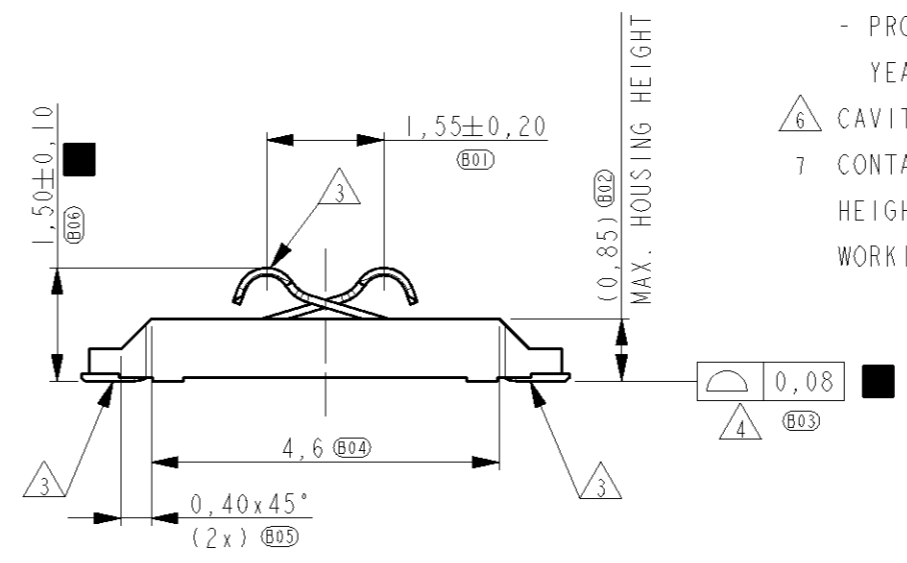
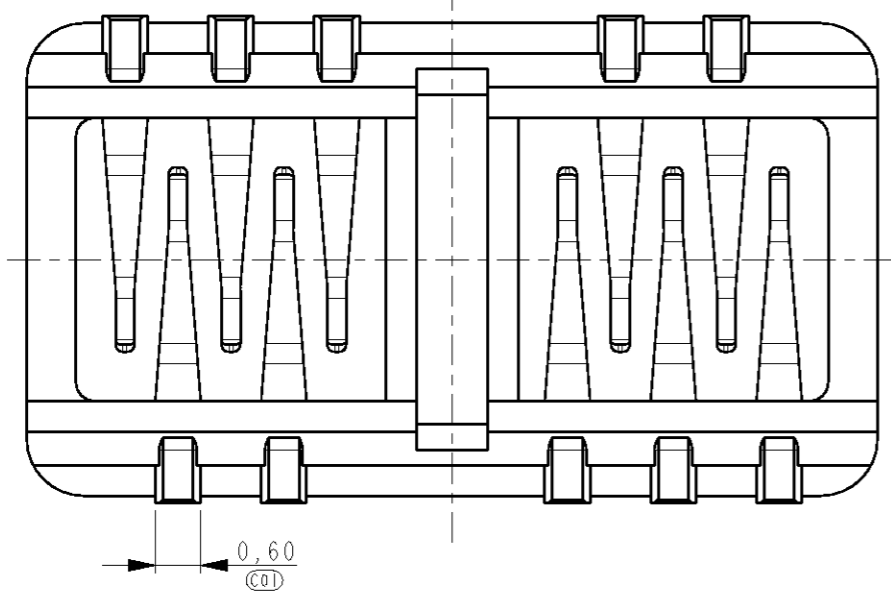
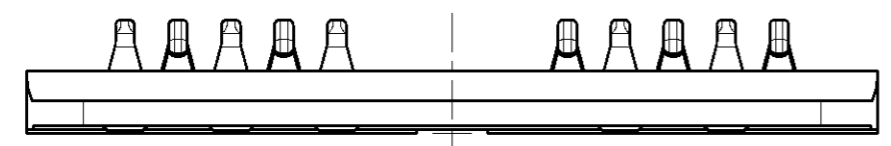
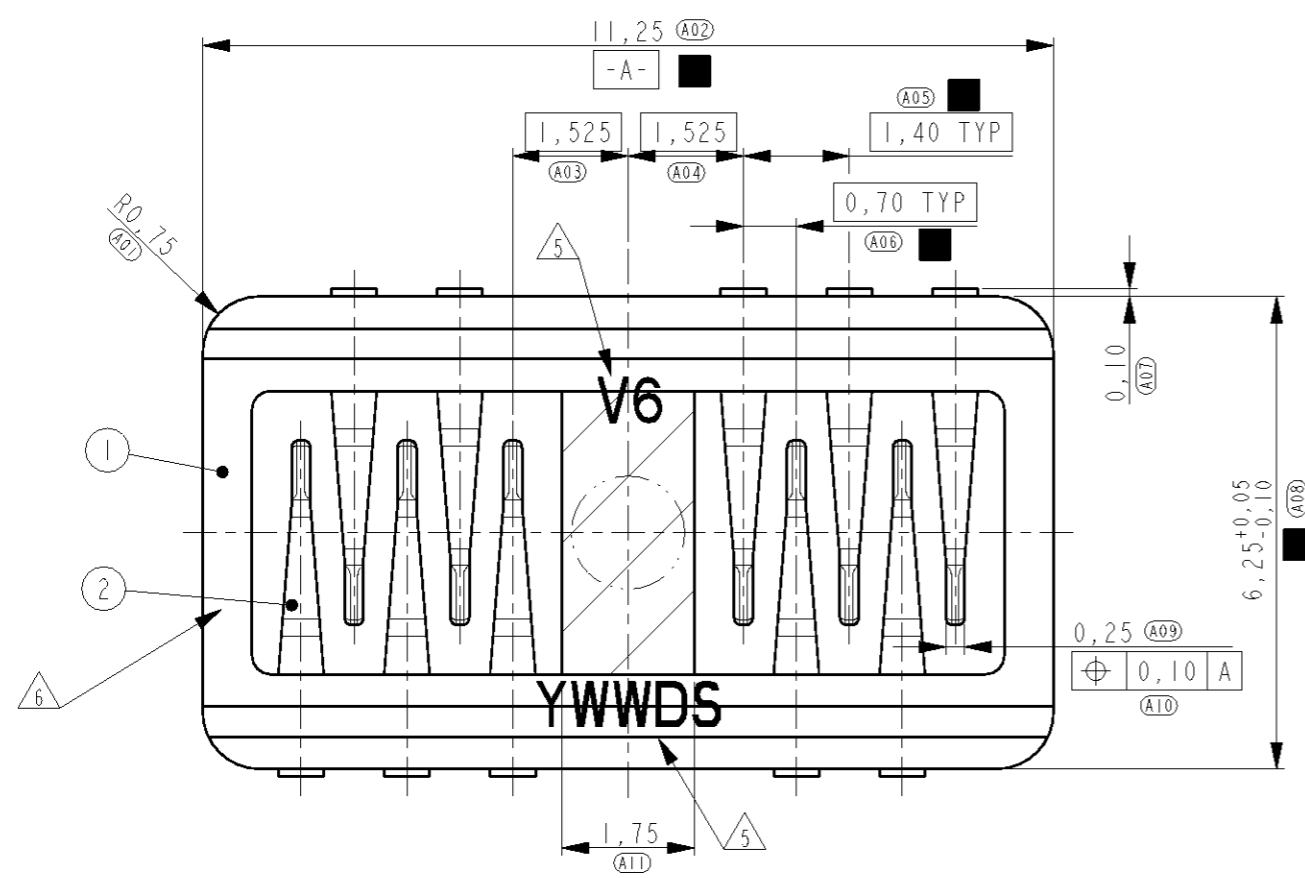


THIS DRAWING IS UNPUBLISHED. RELEASED FOR PUBLICATION  
 © COPYRIGHT - BY TYCO ELECTRONICS CORPORATION. ALL RIGHTS RESERVED.

LOC	DIST	REVISIONS			
P	LTR	DESCRIPTION	DATE	DWN	APVD
H	-				
	13	TOLERANCE CHANGE DIM A08	12APR2010	PW	JD
	A	ECR-10-016181	29JUL2010	PW	JD



NOTES:

- P.N. AS SHOWN 1551246-2.
- DRAWING REPRESENTS PART VERSION V6.
- PLATING: 1,27µm MIN. NICKEL ALL OVER, 0,5µm MIN GOLD ON CONTACT POINTS, GOLD FLASH ON SOLDER TAILS.
- COPLANARITY OF SOLDER SURFACES 0,08 MAX.
- LASER MARKING:
  - PART VERSION ('V6'),
  - PRODUCTION DATE CODE ('YWWDS' YEAR, WEEK, DAY + DAY/NIGHT SHIFT)
- CAVITY ID, RECESSED.
- CONTACT NORMAL FORCE 0,3N AT NOMINAL WORKING HEIGHT OF 0,95mm MEASURED FROM THE PWB. WORKING RANGE IS ±0,10mm (0,85 - 1,05mm)

ITEM NO.	DESCRIPTION	MATERIAL	FINISH
2	CONTACT	COPPER ALLOY	GOLD PLATED
1	HOUSING	PLASTIC, GF	-

THIS DRAWING IS A CONTROLLED DOCUMENT FOR TYCO ELECTRONICS CORPORATION IT IS SUBJECT TO CHANGE AND THE CONTROLLING ENGINEERING ORGANIZATION SHOULD BE CONTACTED FOR THE LATEST REVISION.

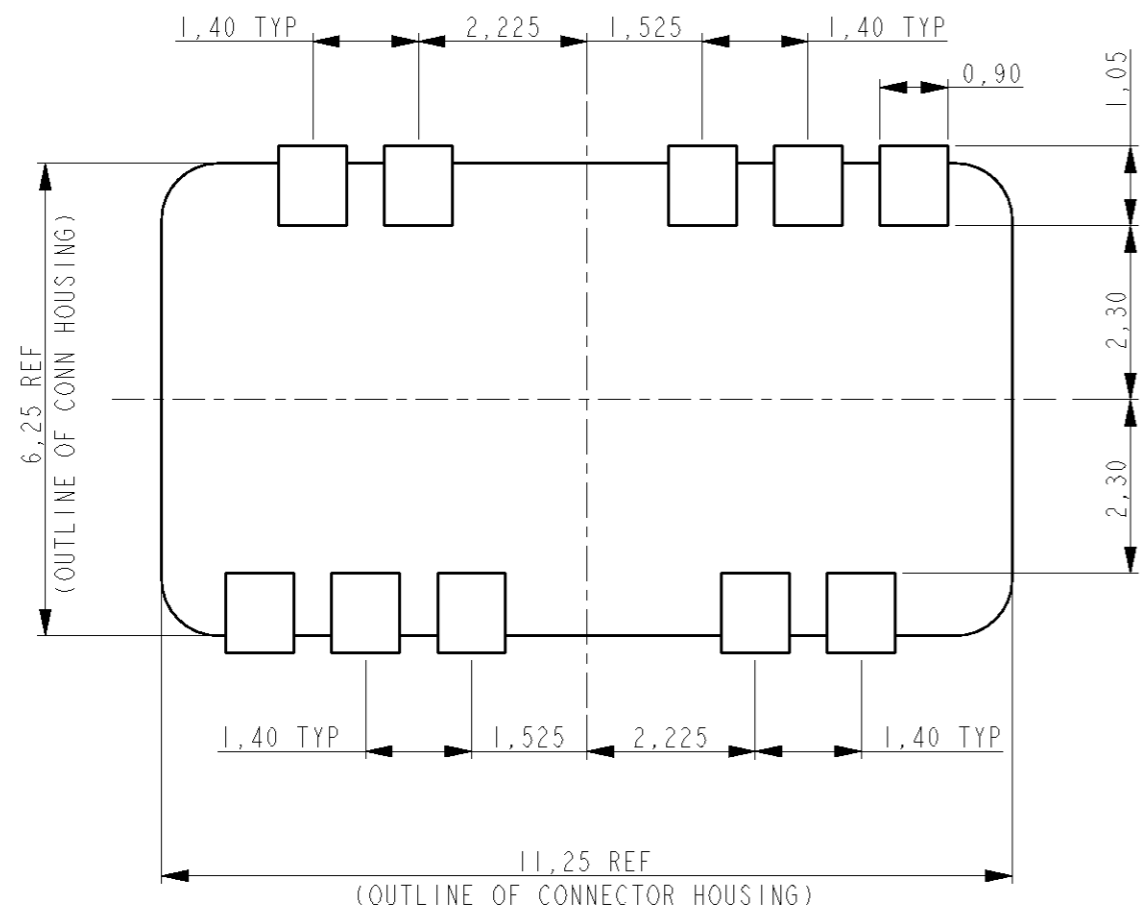
DIMENSIONS:	TOLERANCES UNLESS OTHERWISE SPECIFIED:
mm	
0 PLC	±0,2
1 PLC	±0,1
2 PLC	±0,05
3 PLC	±
4 PLC	±
ANGLES	±
MATERIAL	FINISH

DWN	07-May-09	Tyco Electronics Corporation 's-Hertogenbosch, Nederland	
CHK	P. Willems		
APVD	M. Gosselink		
PRODUCT SPEC	J. Dittner		
APPLICATION SPEC	108-19392	NAME	10 POS DOUBLE ROW B+B CONNECTOR
WEIGHT	0,055 gr	SIZE	A3
CUSTOMER DRAWING		CAGE CODE	00779
		DRAWING NO	1551246
		RESTRICTED TO	-
		SCALE	10:1
		SHEET	1 OF 3
		REV	A

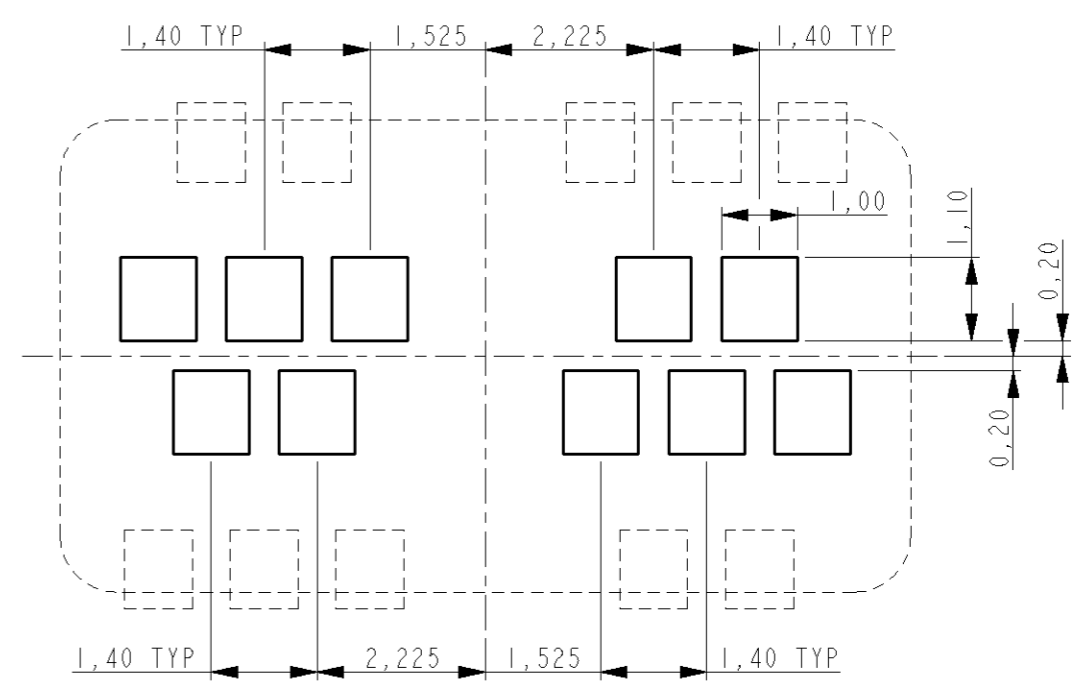
THIS DRAWING IS UNPUBLISHED. RELEASED FOR PUBLICATION

© COPYRIGHT - BY TYCO ELECTRONICS CORPORATION. ALL RIGHTS RESERVED.

LOC	DIST	REVISIONS					
		P	LTR	DESCRIPTION	DATE	DWN	APVD
H	-	-	-	SEE SHEET 1	-	-	-



RECOMMENDED PWB LAY-OUT  
PWB SOLDER SIDE



RECOMMENDED PWB LAY-OUT  
PWB CONTACT SIDE

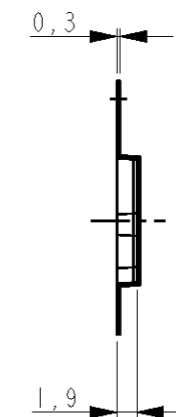
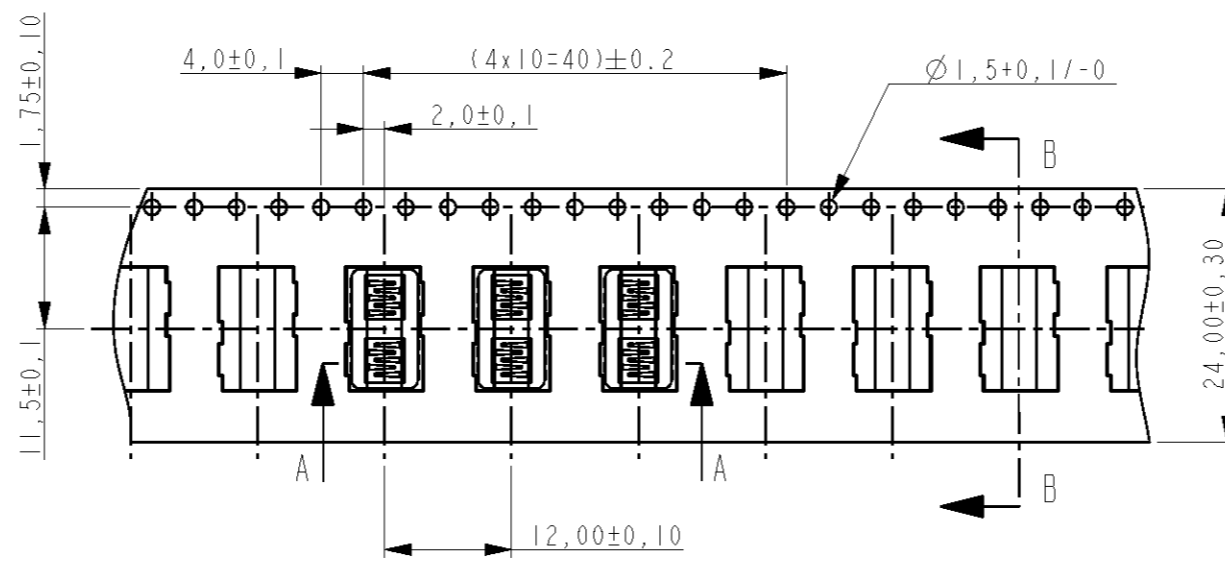
THIS DRAWING IS A CONTROLLED DOCUMENT FOR TYCO ELECTRONICS CORPORATION IT IS SUBJECT TO CHANGE AND THE CONTROLLING ENGINEERING ORGANIZATION SHOULD BE CONTACTED FOR THE LATEST REVISION.		DWN P. Willems 07-May-09	Tyco Electronics Tyco Electronics Corporation 's-Hertogenbosch, Nederland	
DIMENSIONS: mm		CHK M. Gosselink	NAME 10 POS DOUBLE ROW B+B CONNECTOR	
TOLERANCES UNLESS OTHERWISE SPECIFIED: 0 PLC ±0,2 1 PLC ±0,1 2 PLC ±0,05 3 PLC ± 4 PLC ± ANGLES ±		APVD J. Dittner	PRODUCT SPEC 108-19392	
MATERIAL -		FINISH -	APPLICATION SPEC -	RESTRICTED TO -
		WEIGHT 0,055 gr	SIZE A3	CAGE CODE 00779
		CUSTOMER DRAWING	DRAWING NO C=1551246	SCALE 10:1
			SHEET 2	OF 3
			REV A	

THIS DRAWING IS UNPUBLISHED. RELEASED FOR PUBLICATION

© COPYRIGHT - BY TYCO ELECTRONICS CORPORATION. ALL RIGHTS RESERVED.

LOC	DIST	REVISIONS			
P	LTR	DESCRIPTION	DATE	DWN	APVD
H	-	SEE SHEET 1	-	-	-

SECTION A-A



SECTION B-B

UNREEL DIRECTION →

NOTES:

- 1 REEL DIMENSIONS: 330x100x32,4mm
- 2 QTY PER REEL: 2500pcs

<small>THIS DRAWING IS A CONTROLLED DOCUMENT FOR TYCO ELECTRONICS CORPORATION IT IS SUBJECT TO CHANGE AND THE CONTROLLING ENGINEERING ORGANIZATION SHOULD BE CONTACTED FOR THE LATEST REVISION.</small>		DWN <b>P. Willems</b> 07-May-09 CHK <b>M. Gosselink</b> APVD <b>J. Dittner</b>		Tyco Electronics Corporation 's-Hertogenbosch, Nederland	
DIMENSIONS: mm		TOLERANCES UNLESS OTHERWISE SPECIFIED: 0 PLC ±0,2 1 PLC ±0,1 2 PLC ±0,05 3 PLC ±- 4 PLC ±- ANGLES ±-		NAME <b>10 POS DOUBLE ROW B+B CONNECTOR</b>	
		MATERIAL - FINISH -		PRODUCT SPEC <b>108-19392</b> APPLICATION SPEC -	
		WEIGHT <b>0,055 gr</b>		SIZE <b>A3</b> CAGE CODE <b>00779</b> DRAWING NO <b>1551246</b> RESTRICTED TO -	
CUSTOMER DRAWING				SCALE <b>10:1</b> SHEET <b>3</b> OF <b>3</b> REV <b>A</b>	