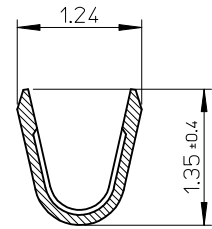
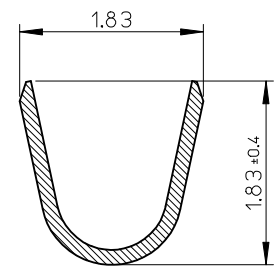


- NOTES.
- 適合ハウジング: 504051****
APPLICABLE HOUSING : 504051****
 - 材質: 銅合金
MATERIAL : COPPER ALLOY
 - メッキ仕様: 金メッキ、ニッケル下地
PLATING : GOLD PLATING
NICKEL UNDER PLATING
 - 圧着後、CS-504052-001の内容を満たす事
FULFILL THE CONTENTS OF
CS-504052-001 AFTER CRIMP



SECTION A-A



SECTION B-B

φ0.8 - 1.1mm	AWG #24 - 28	5040520098	CHAIN
INS. RANGE	WIRE RANGE	ORDER No.	FORM

RELEASED EC NO: J2014-1702 DRWN: YMAKE 2014/05/21 CHKD: KASAKAWA 2014/05/21 APPR: NUKITA 2014/05/21	DESCRIPTION REV A	GENERAL TOLERANCES (UNLESS SPECIFIED)		DIMENSION STYLE MM ONLY		SCALE 20:1	DESIGN UNITS METRIC	THIRD ANGLE PROJECTION	
		10 UNDER ±0.2	10 OVER 30 UNDER ±0.25	DRAWN BY THANYU	DATE 2012/03/29	TITLE 1.5 WIRE TO BOARD CONN. REC CRIMP TERMINAL (AWG #24 - 28)			
		30 OVER ±0.3	ANGULAR ±3 °	CHECKED BY KASAKAWA	DATE 2012/03/29	molex			
		DRAFT WHERE APPLICABLE MUST REMAIN WITHIN DIMENSIONS		APPROVED BY YOITO	DATE 2012/09/04	MATERIAL NO. SEE CHART		DOCUMENT NO. SD-504052-001	SHEET NO. 1 OF 1