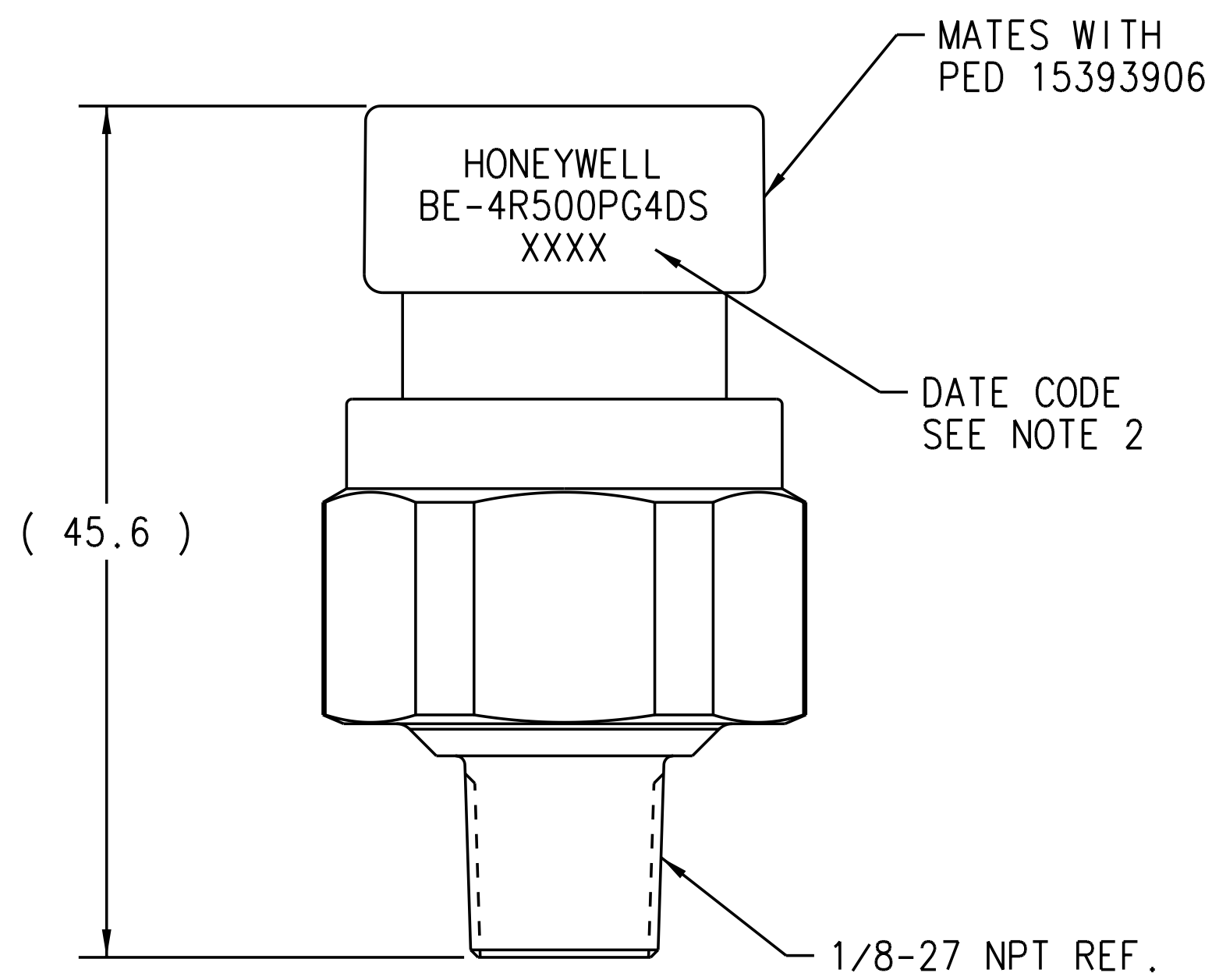


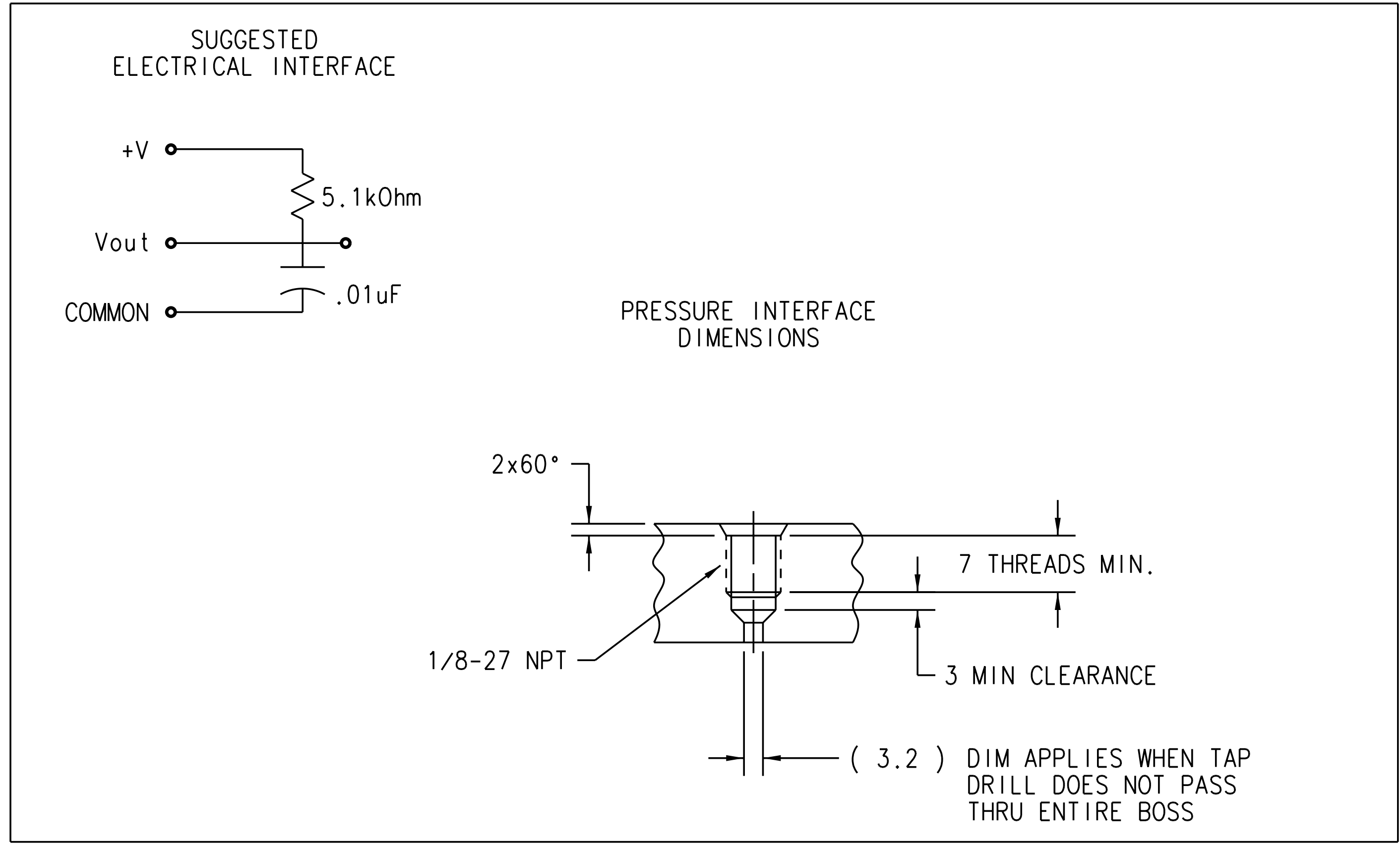
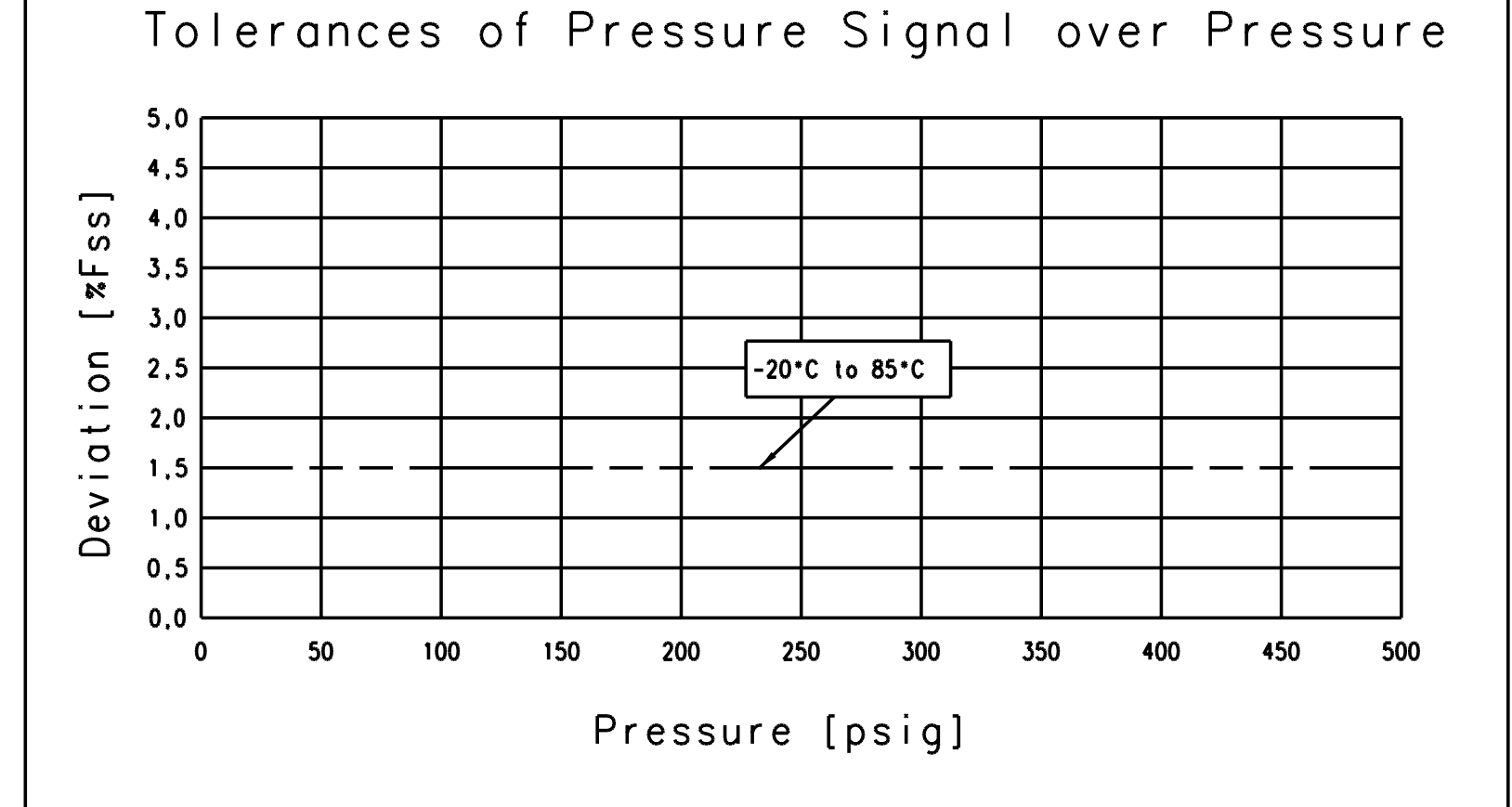
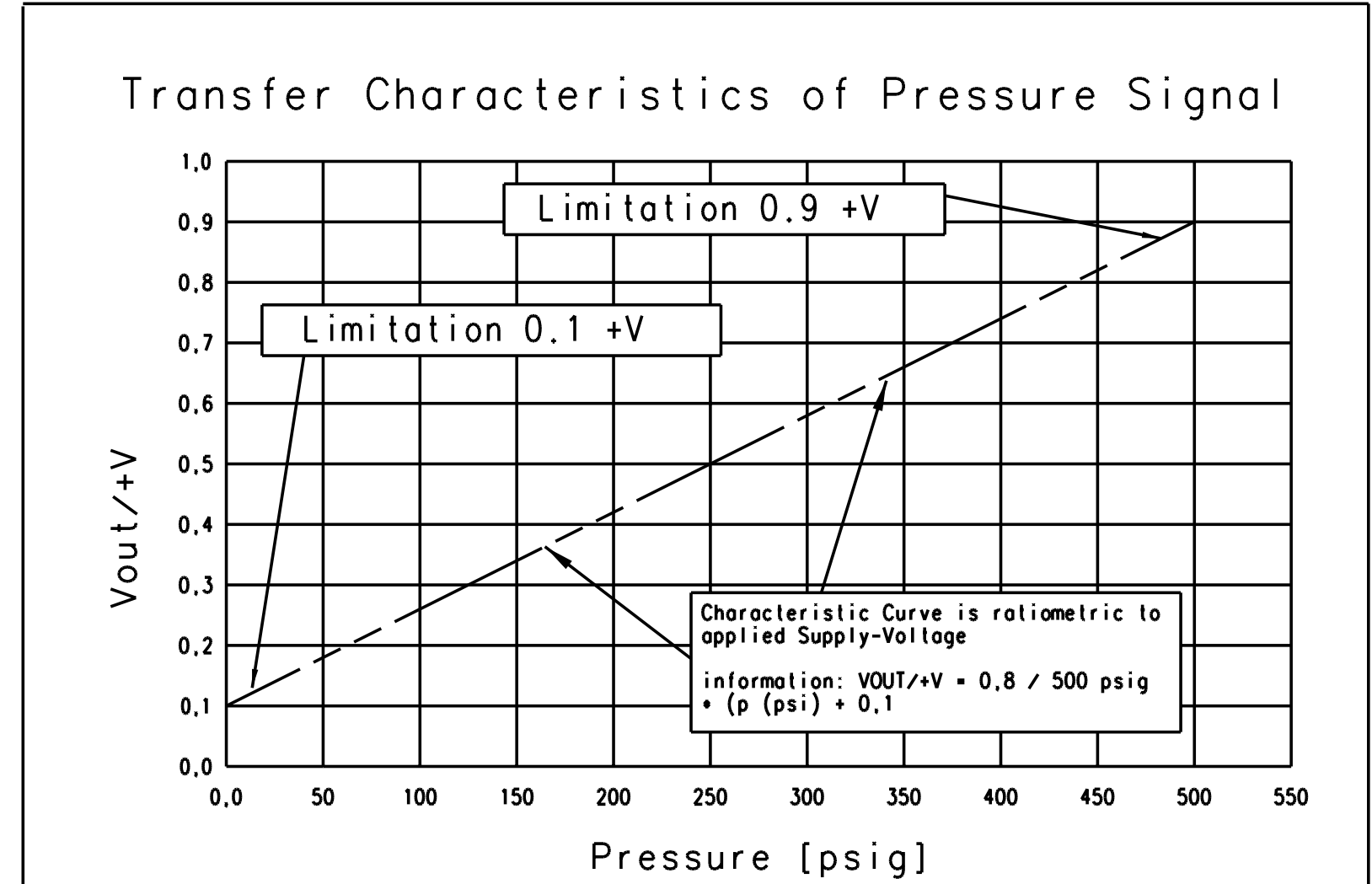
CONNECTOR MAY BE IN AN ALTERNATE ALIGNMENT WITH RESPECT TO THE HEX.



Part	Material
Contact pin	CDA 210 (brass)
Surface Treatment	Tin
Connector body - black	PBT 30% GF
Sensor housing	303 SS
Pressure Port	17-4 Stainless Steel

Specifications:

Maximum Tightening Torque	20 Nm
Recommended Tightening Torque	15 Nm
Current Consumption	10 mA
Supply Voltage	4.75 to 5.25 VDC
Output Current	2 kOhm min Load
Burst Pressure	1500 psi
Proof Pressure	1000 psi
This Sensor is Reverse Polarity/Overvoltage Protected to	14V
Temperature Range	-20°C to 85°C



- NOTES:
- INSTALLATION INSTRUCTION: WRAP 3.5 TO 4 TURNS OF 0.076mm (.003") THICK TEFLON THREAD SEALANT TAPE AND TORQUE SENSOR TO 15-20 Nm.
  - DATE CODE CONTAINS 4 DIGITS (XXXX) THE FIRST DIGIT SIGNIFIES THE YEAR THE LAST THREE DIGITS SIGNIFY THE DATE OF THE YEAR
  - VALIDATED TO TEST SPEC. 88842055

THIS DRAWING AND SPECIFICATIONS ARE THE PROPERTY OF HONEYWELL SENSING AND CONTROL AND SHALL NOT BE REPRODUCED, COPIED, OR USED AS THE BASIS FOR MANUFACTURE OR SALE OF APPARATUS OR DEVICES WITHOUT WRITTEN PERMISSION OF HONEYWELL SENSING AND CONTROL.		DRAWING TO BE INTERPRETED USING ASME Y14.5M-1994 CHANGES TO BE DONE ON CAD SYSTEM ONLY		<input type="checkbox"/> INCH <input checked="" type="checkbox"/> MM TOLERANCE 1 PLACE ± 2 PLACE ± 3 PLACE ± ANGULAR ± DWG. SIZE C	DRAWN RY 04/04/02 CHECKED T.PHAM 04/04/02 ENG. APP. TP 05/21/02 E.R.N. 44110 05/21/02 SCALE 2:1	<b>Honeywell</b> Sensing and Control 1100 Airport Road Shelby, NC 28150-3699
MAKE FROM		MATERIAL		PART NAME		
FINISH		PART NO.		CHANGE		
O2 ADDED CHARTS AND OTHER DATA		O1 1/8-27 NPT WAS 1/4-18 NPT		17650082		
CH.	CHANGE DESCRIPTION	CHG'D BY	DATE	02		
		APP'D BY	ECH#			