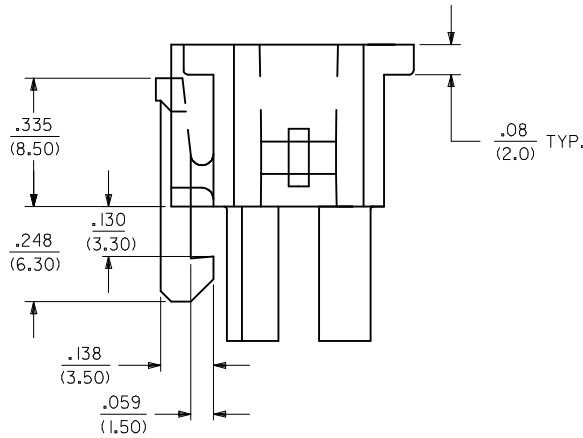
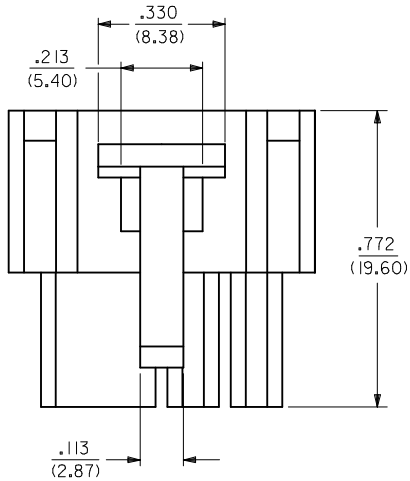
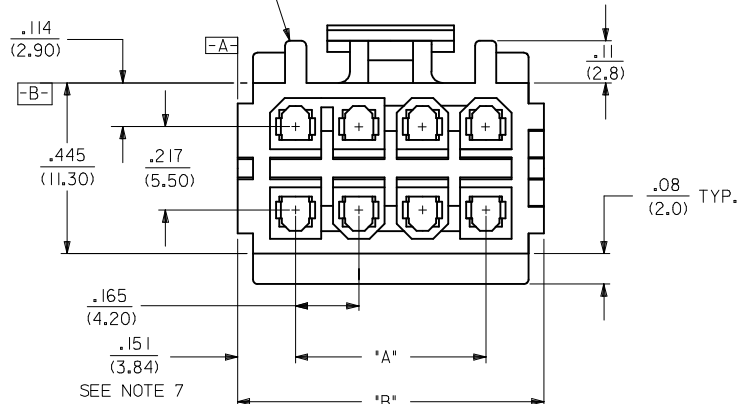


PROTECTIVE SIDES AVAILABLE ON ALL CIRCUITS EXCEPT TWO AND FOUR CIRCUITS.

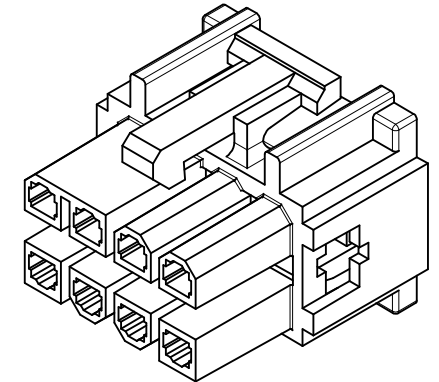
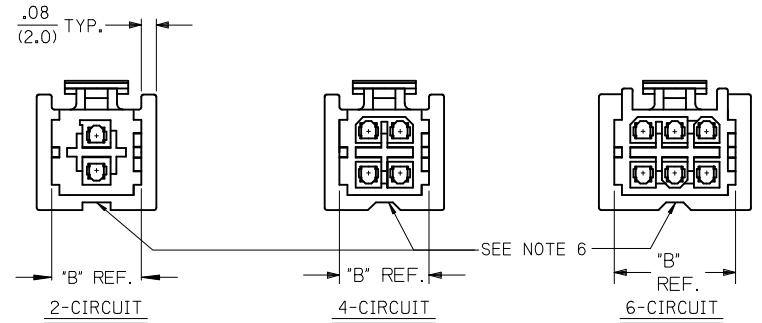
SEE NOTE 8



PROTECTIVE SIDES AVAILABLE ON ALL CIRCUITS EXCEPT TWO AND FOUR CIRCUITS.



SEE NOTE 7



NOTES:

- MATERIAL: UNFILLED POLYESTER. U.L. 94V-0. HOUSING COLOR: SEE CHART
- FINISH: N/A
- PRODUCT SPECIFICATION: PS-5556-003
- PACKAGING SPECIFICATION: PK-30067-001.
- HOUSING TO BE USED WITH TERMINAL #5556. AND T.P.A. LOCK #30072-*. RECEPTACLE HOUSING TO MATE WITH PLUG HOUSING #30068, ST. HEADER #30069, AND RT. ANGLE HEADERS #30070 & #44483. HOUSING ACCEPTS CONNECTOR POSITIONING ASSURANCE (C.P.A.) LOCK #30071.
- RELIEF NOTCH IS OPTIONAL AND MAY OR MAY NOT APPEAR ON 2, 4, 6, 10 & 12 CIRCUIT HOUSINGS ONLY.
- FOR 2 CKT HOUSING, DIMENSION IS .231/5.88
- FOR 2 & 4 CKT HOUSINGS, DIMENSION IS .070/1.78
- THIS PART CONFORMS TO CLASS B REQUIREMENTS OF COSMETIC SPEC PS-45499-002.
- TEXT ON PART IS FOR REFERENCE ONLY. TEXT AND TEXT LOCATION MAY VARY DEPENDING ON PART NUMBER AND/OR TOOL.

REMOVE NAT P/N'S EC NO: UCP2017-0405 DRWING:SLAFER 2016/09/15 CHKD:JBELL 2016/09/15 APPR:FSMITH 2016/09/21 H4	QUALITY SYMBOLS ∇=0 ∇=0 ∇=0	GENERAL TOLERANCES (UNLESS SPECIFIED)		DIMENSION STYLE		SCALE	DESIGN UNITS	THIRD ANGLE PROJECTION			
				IN/MM		4:1	METRIC				
				DRAWN BY		DATE		TITLE			
				RJF		09/23/91		2-16 CKT, RECPT. HSG. MINI-FIT T.P.A. SERIES			
		4 PLACES ± .010		CHECKED BY		DATE		molex SD-30067-* SHEET NO. 1 OF 2			
		3 PLACES ± .010		GEP		09/23/91					
		2 PLACES ± 0.25 ± .014		APPROVED BY		DATE		THIS DRAWING CONTAINS INFORMATION THAT IS PROPRIETARY TO MOLEX INCORPORATED AND SHOULD NOT BE USED WITHOUT WRITTEN PERMISSION			
		1 PLACE ± 0.36 ± .014		FSMITH		2010/10/25					
		0 PLACE ±		MATERIAL NO.		DOCUMENT NO.					
		ANGULAR ±1/2°		SEE CHART							
		DRAFT WHERE APPLICABLE MUST REMAIN WITHIN DIMENSIONS		SIZE C							

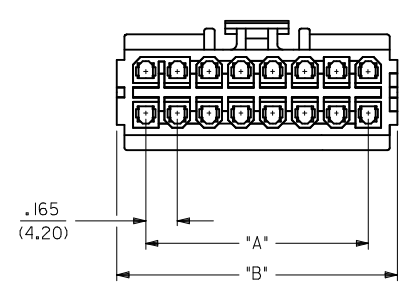
	13	12	11	10	9	8	7	6	5	4	3	2	1
	BLACK		NATURAL										
J	CKT. SIZE	ENG. NO.	EDP. NO.	ENG. NO.	EDP. NO.	DIM. "A"	DIM. "B"						
	02	30067-02A2	I5-97-502I			—	.467 (11.86)						
	04	30067-04A2	I5-97-504I	30067-0412	30067-0412	.165 (4.20)	.467 (11.86)						
I	06	30067-06A2	I5-97-506I	30067-0612	30067-0612	.331 (8.40)	.633 (16.08)						
	08	30067-08A2	I5-97-508I			.496 (12.60)	.798 (20.27)						
	10	30067-10A2	I5-97-510I			.661 (16.80)	.963 (24.46)						
H	12	30067-12A2	I5-97-512I			.827 (21.00)	1.129 (28.68)						
	14	30067-14A2	NOT TOOLED			.992 (25.20)	1.294 (32.87)						
	16	30067-16A2	I5-97-516I			1.157 (29.40)	1.459 (37.06)						

LEGEND:

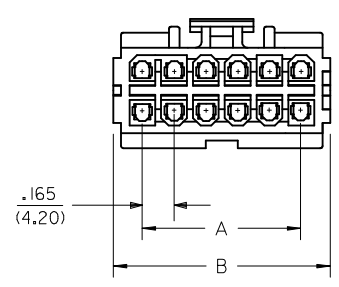
30067 - ** * 2

CIRCUIT SIZE ——— (02-16)

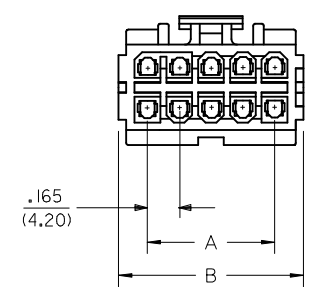
HOUSING COLOR ———
A = BLACK
1 = NATURAL



16 CIRCUITS



12 CKT.



10 CKT.

SEE SHEET 1 EC NO: UCP2017-0405 DRWNC:LAFTER 2016/09/15 CHKD:JBELL 2016/09/15 APPR:FSMITH 2016/09/21 H4	QUALITY SYMBOLS 	GENERAL TOLERANCES (UNLESS SPECIFIED)		DIMENSION STYLE IN/MM		SCALE 2:1	DESIGN UNITS METRIC	THIRD ANGLE PROJECTION		
			4 PLACES ± --- ± --- 3 PLACES ± --- ± .010 2 PLACES ± 0.25 ± .014 1 PLACE ± 0.36 ± --- 0 PLACE ± ±	mm INCH ± --- ± --- ± .010 ± .014 ± --- ± --- ± ±	DRAWN BY RJF CHECKED BY GEP APPROVED BY FSMITH	DATE 09/23/91 DATE 09/23/91 DATE 2010/10/25	2-16 CKT. RECP. HSG. MINI-FIT T.P.A. SERIES			
			ANGULAR ±1/2°		MATERIAL NO. SEE CHART		DOCUMENT NO. SD-30067-*			
			DRAFT WHERE APPLICABLE MUST REMAIN WITHIN DIMENSIONS		SIZE 		THIS DRAWING CONTAINS INFORMATION THAT IS PROPRIETARY TO MOLEX INCORPORATED AND SHOULD NOT BE USED WITHOUT WRITTEN PERMISSION			SHEET NO. 2 OF 2