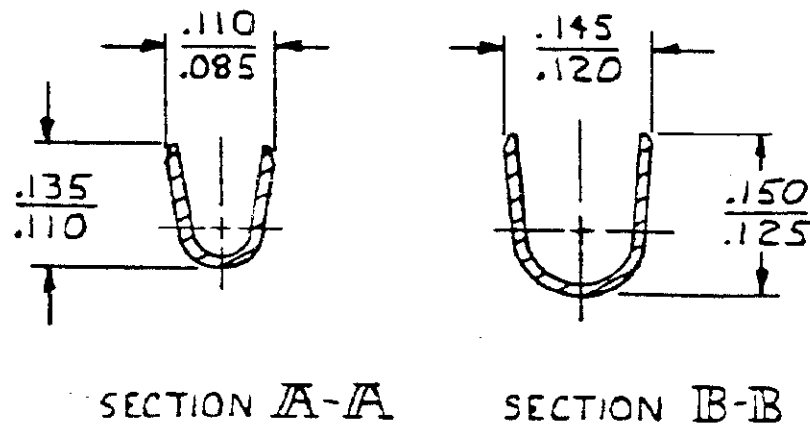
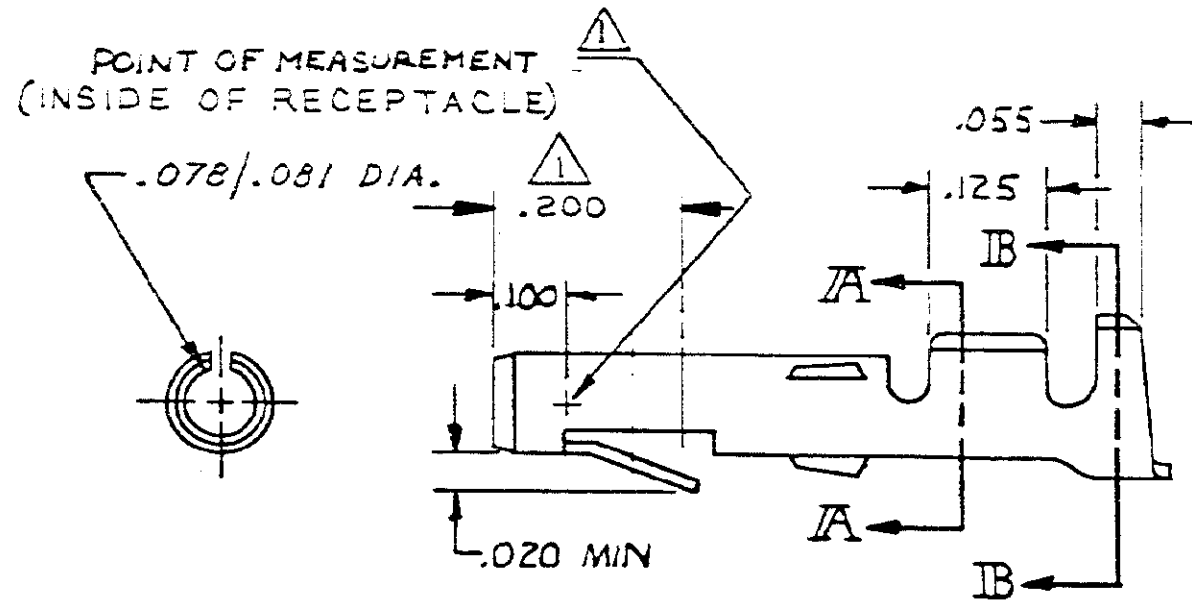
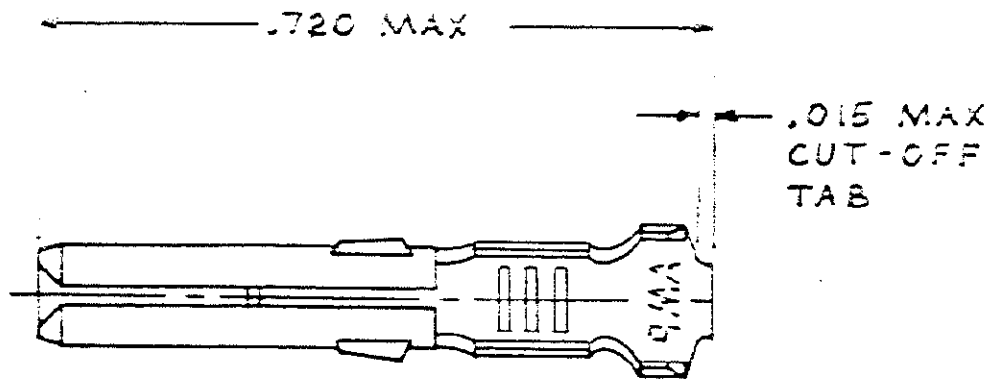


THIS DRAWING IS UNPUBLISHED. RELEASED FOR PUBLICATION . 19
 © COPYRIGHT 19 BY AMP INCORPORATED, HARRISBURG, PA. ALL INTERNATIONAL RIGHTS RESERVED. AMP PRODUCTS MAY BE COVERED BY U.S. AND FOREIGN PATENTS AND/OR PATENTS PENDING.

REVISIONS						
P	F	ZONE	LTR	DESCRIPTION	DATE	APPROVED
✓		0		RLSD PER DFTG REQUEST 84-6	6-12-84	TB/
✓		A		REV PER ECN CM.54	9/20/85	IS/RS
✓		B		OBSOLETE -28-3 CM-473	5-14-86	Kw /RS
✓		C		OBSOLETE -4 PER CM-862	9-3-87	PKS



- 1. NICKEL PLATED ON ENTIRE TERMINAL, .000030 GOLD OVER INSIDE OF MATING AREA AND WIRE BARREL.
- 2. WIRE RANGE: 18-24 AWG.
- 3. INSULATION RANGE: .100 MAX.

GOLD	△	.010 BRASS	61473-5
PRE-TIN		.010 BRASS	61473-1
FINISH		MATERIAL	PART NO.

UNLESS OTHERWISE SPECIFIED DIMENSIONS ARE IN INCHES. TOLERANCES ON: DECIMALS ± .005 ANGLES ± .005		CONTRACT NO		PART NO	
MATERIAL SEE TABLE		OR <i>T Beck 6/12/84</i>		AMP AMP INCORPORATED Harrisburg, Pa.	
FINISH SEE TABLE		CHG <i>M. Jones 6/12/84</i> APPD <i>R. L. ... 6-13-84</i>			
		DSGN APPD		NAME SOCKET, COMMERCIAL MATE-N-LOK, LOOSE PIECE	
		OTHER APPD		DRAWING NO 61473	
		SCALE 5:1		SHEET	

CUSTOMER DRAWING