

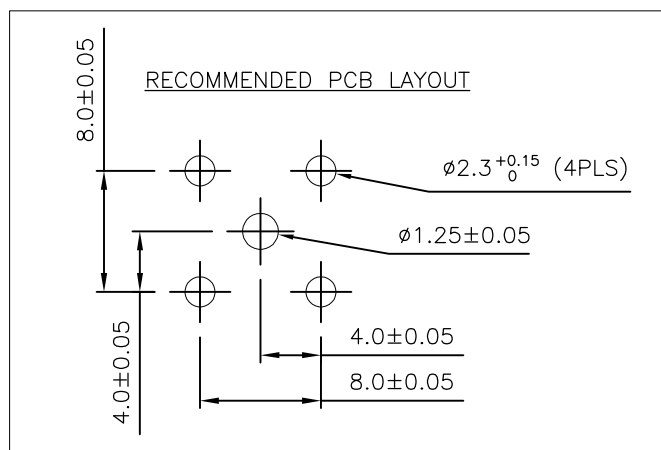
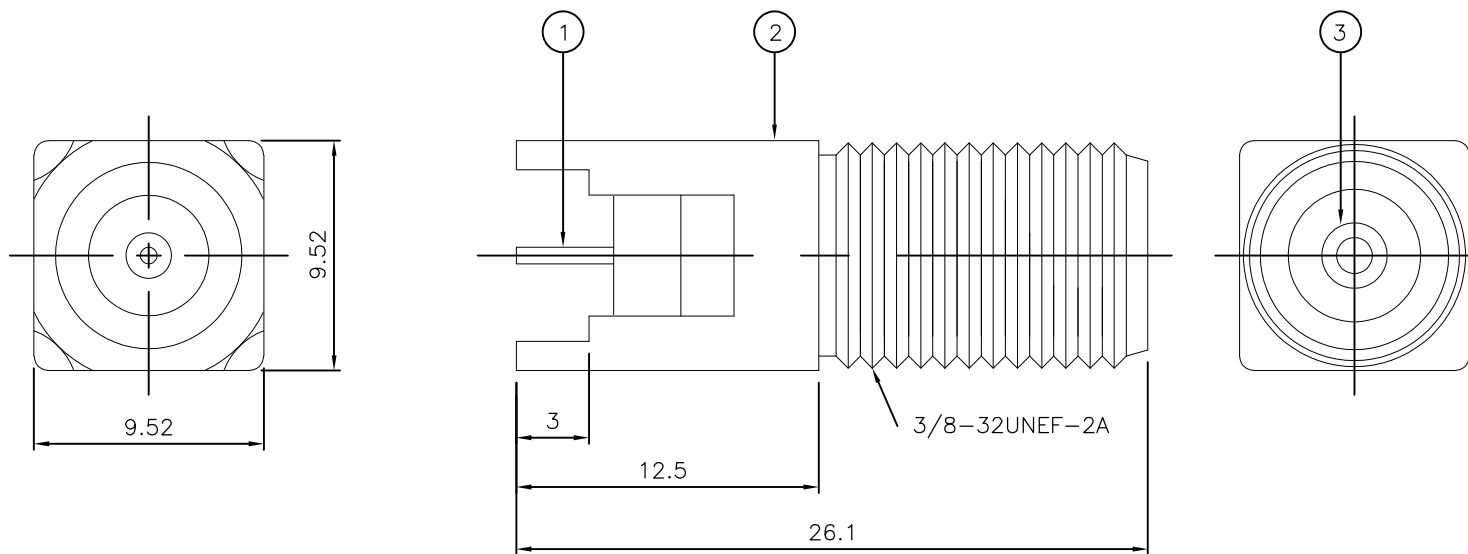
THIS DRAWING IS UNPUBLISHED. RELEASED FOR PUBLICATION AUGUST ,2006.

© COPYRIGHT 2006 By - ALL RIGHTS RESERVED.

LOC	DIST	REVISIONS			
P	LTR	DESCRIPTION	DATE	DWN	APVD
	C	REVISED PER ECO-09-003420	14FEB09	ANS	BOB
	D	REVISED PER ECO-11-021675	02NOV11	TITAN	MARTIN

NOTES:

- 1 PACK IN ACCORDANCE WITH AMP SPEC 107-3275
- 2 100 TRAY PACK IN ACCORDANCE WITH AMP SPEC 107-3275
- 3 Sn PLATING
- 4 Ni PLATING
- 5 FOR TECHNICAL DATA REFER TO YOUR LOCAL TYCO ELECTRONICS SALES OFFICE
- 6 ALL DIMENSIONS ARE NOMINAL FOR REFERENCE ONLY UNLESS OTHERWISE STATED



QTY	PLC	DESCRIPTION	ITEM
1	1	PE	INSULATION 3
1	1	ZINC	BODY 2
1	1	PHOSPHOR BRONZE	CONTACT 1
5--1	5--0	MATERIAL	DESCRIPTION
PARTS LIST			

THIS DRAWING IS A CONTROLLED DOCUMENT.		DWN ANSON 14FEB09	<b>STE</b> TE Connectivity	
DIMENSIONS: mm		CHK RITA ZUO 14FEB09		
TOLERANCES UNLESS OTHERWISE SPECIFIED:		APVD BOB ZHAO 14FEB09	NAME F TYPE STRAIGHT PCB SOCKET 75 OHM	
0 PLC ± 0.5		PRODUCT SPEC 108-112000	SIZE CAGE CODE DRAWING NO RESTRICTED TO	
1 PLC ± 0.3		APPLICATION SPEC	A3 00779 C-1814825	
2 PLC ± 0.2		WEIGHT -	SCALE NTS SHEET 1 OF 1 REV D	
3 PLC ± -		CUSTOMER DRAWING		
4 PLC ± -				
ANGLES ± 0.3°				
MATERIAL SEE TABLE				
FINISH -				