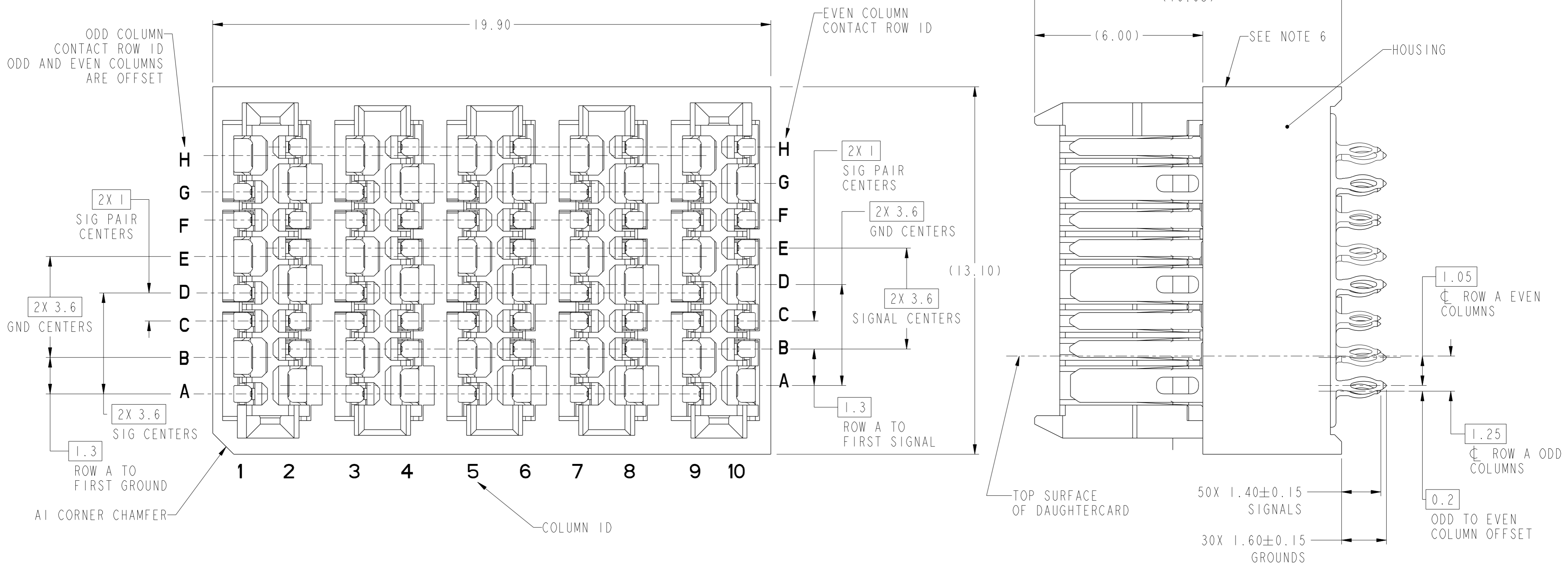


PRODUCT NUMBER  
SEE SHEET 16

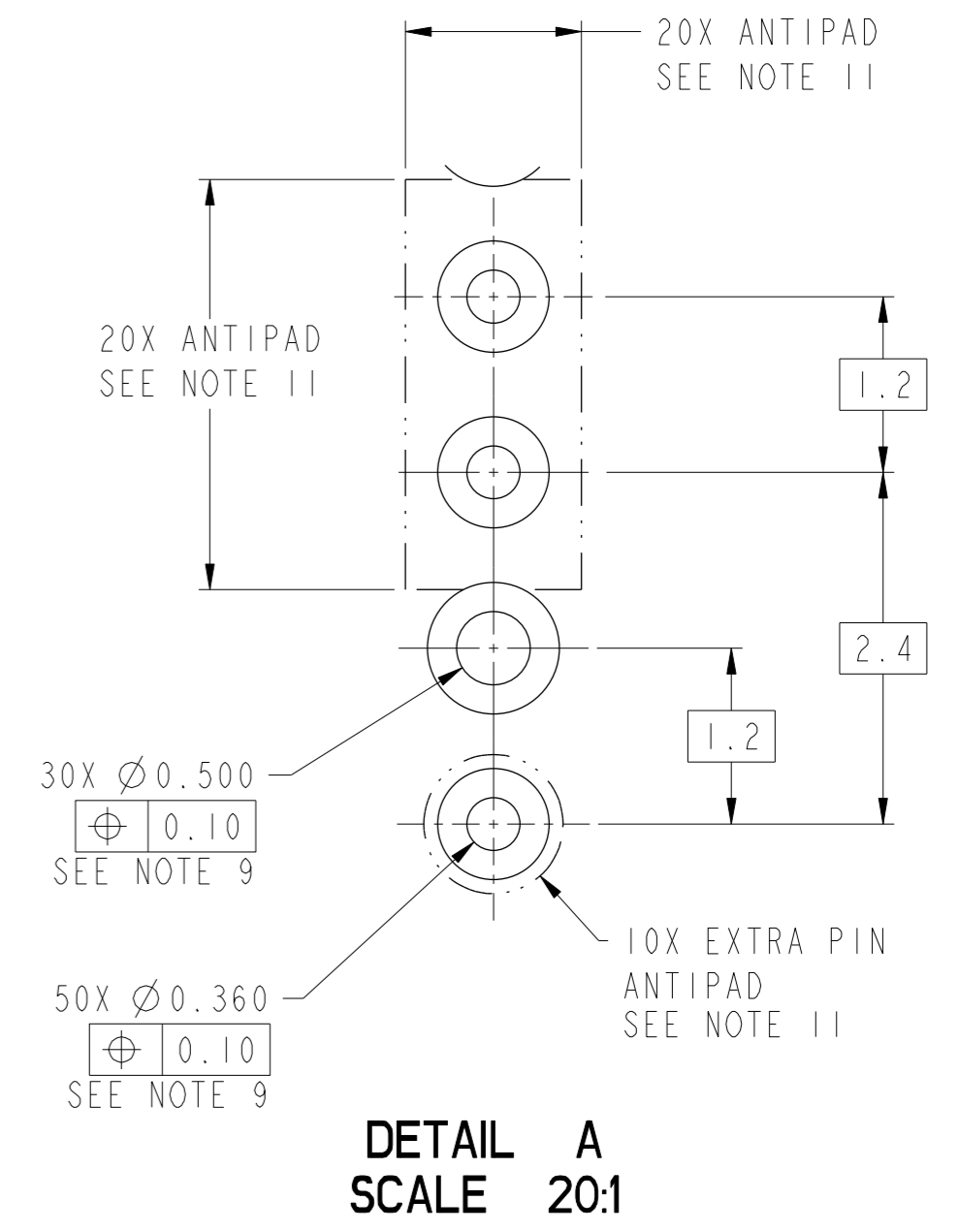
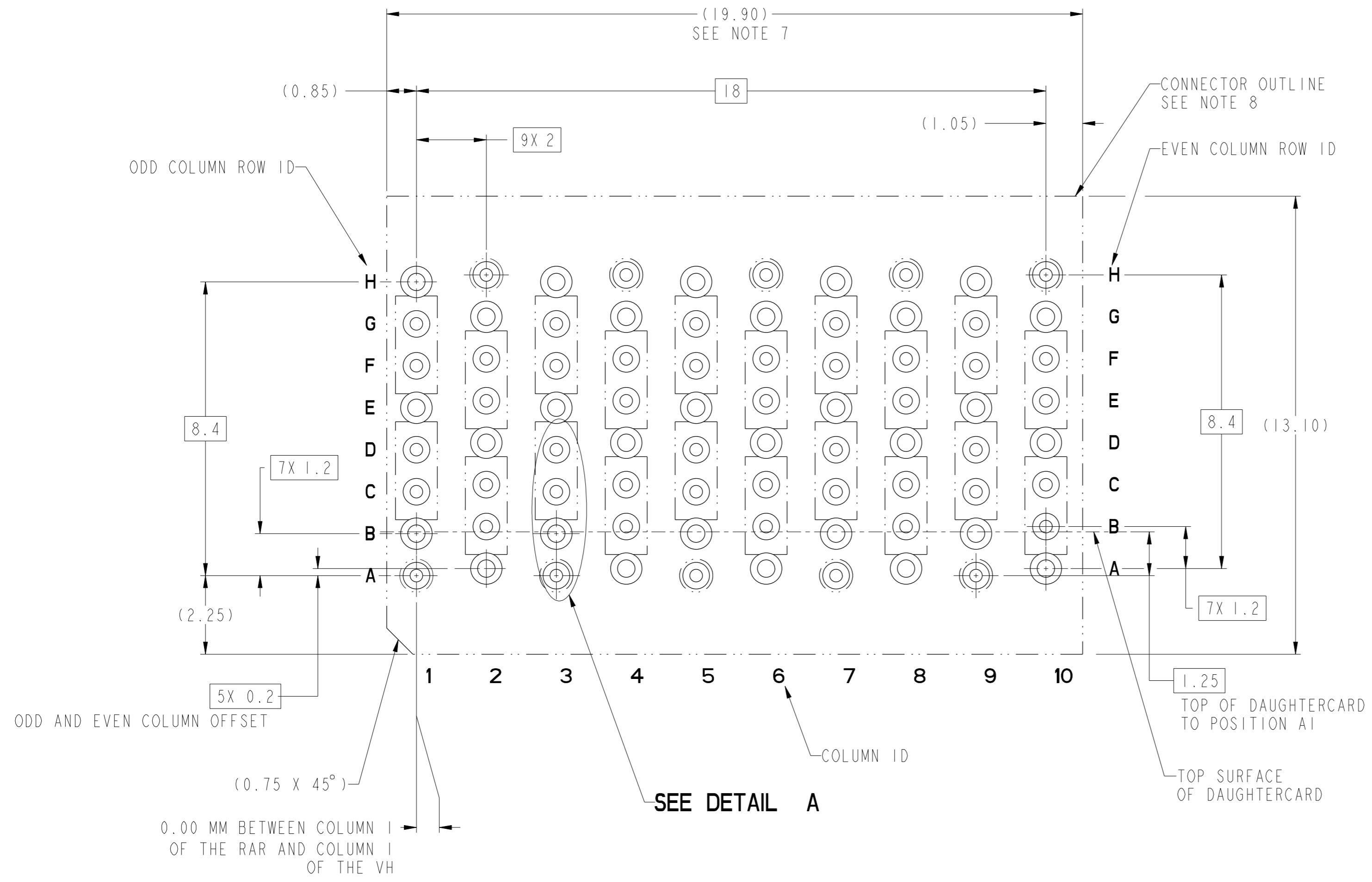


10124414-Y01LF  
(10124414-101LF STANDARD MATE CONNECTOR SHOWN)



Copyright FCI.

spec ref	---	dr	Daniel Xiao	2014/01/20	projection	MM	size	A2	scale	10:1
tolerance std	ASME Y14.5M	eng	Terry Luo	2015/05/14			ecn no	-	rel level	Released
TOLERANCES UNLESS OTHERWISE SPECIFIED		chr	Martin Li	2015/05/14						
surface	✓	appr	Collins Lu	2015/05/14	product family	ExaMAX	cat. no.	10124414	rev	A
	linear	0.X	±.3		title		ExaMAX VERTICAL HEADER		Product - Customer Drw sheet 1 of 17	
		0.XX	±.10		ASS'Y, 2 PAIR, 80 POS, 10 IMLA					
		0.XXX	±.050		SEE TABLE					
	angular	0°	±2°	www.fci.com	Product - Customer Drw		PDS: Rev :A		STATUS:Released	Printed: May 15, 2015

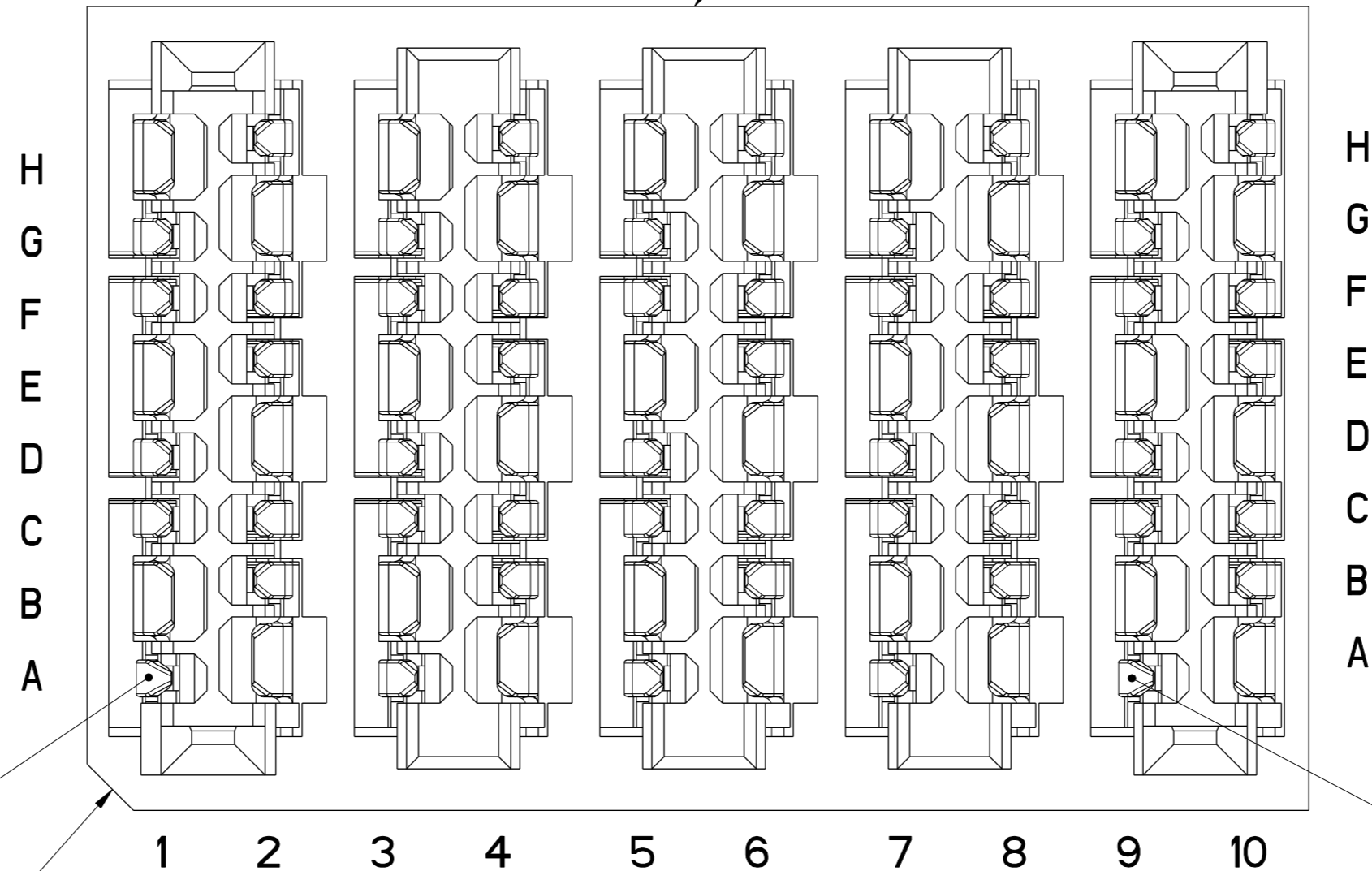


**RECOMMENDED PCB LAYOUT FOR  
10124414-Y01LF COMPONENT SIDE  
SEE NOTES 7, 8, 9, & 11**

Copyright FCI.  
**FCI**

spec ref	---	dr	Daniel Xiao	2014/01/20	projection	MM	size	A2	scale	10:1
tolerance std	ASME Y14.5M	eng	Terry Luo	2015/05/14			ecn no	-	rel level	Released
TOLERANCES UNLESS OTHERWISE SPECIFIED		chr	Martin Li	2015/05/14						
surface	✓	appr	Collins Lu	2015/05/14	product family	ExaMAX	cat. no.	10124414	rev	A
linear	0.X ±.3 0.XX ±.10 0.XXX ±.050	www.fci.com		SEE TABLE	Product - Customer Drw	sheet 2 of 17				
angular	0° ±2°									

SEE NOTE 6



ADVANCED MATE POSITION A1  
SEE NOTE 13

A1 CORNER CHAMFER

ADVANCED MATE POSITION A9  
SEE NOTE 13

**10124414-201LF**  
**ADVANCED MATE CONNECTOR**  
 ADVANCED MATE POSITIONS ARE POSITIONS A1 AND A9 ONLY  
 FOR ALL OTHER DIMENSIONS SEE SHEETS 1 & 2

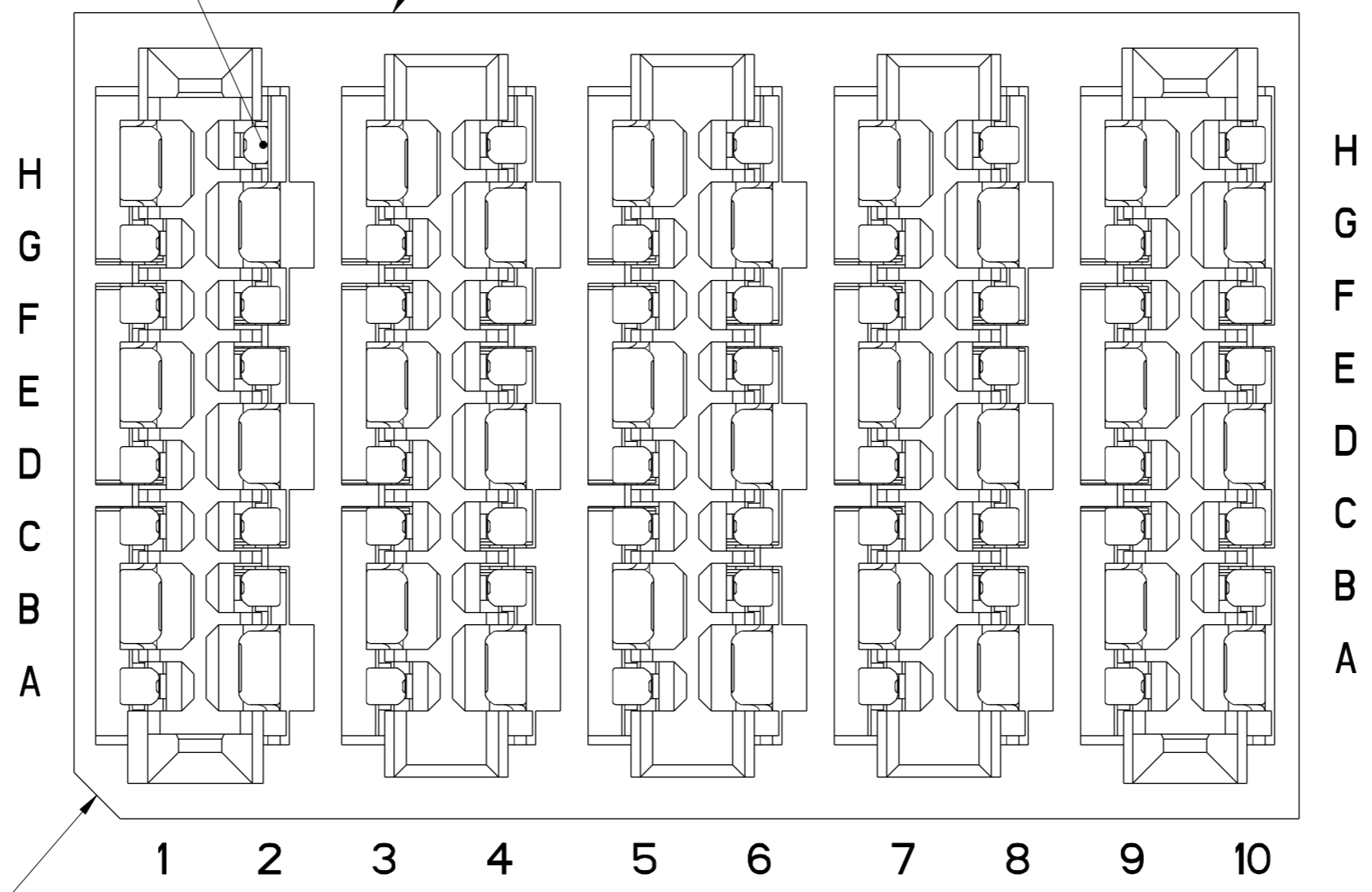


Copyright FCI.

spec ref	---	dr	Daniel Xiao	2014/01/20	projection	MM	size	A2	scale	10:1		
tolerance std	ASME Y14.5M	eng	Terry Luo	2015/05/14			ecn no	-	rel level	Released		
TOLERANCES UNLESS OTHERWISE SPECIFIED		chr	Martin Li	2015/05/14								
surface		linear	0.X	±.3		product family ExaMAX	title ExaMAX VERTICAL HEADER ASS'Y, 2 PAIR, 80 POS, 10 IMLA	no 10124414	rev A	cat. no. SEE TABLE	Product - Customer Draw	sheet 3 of 17
			0.XX	±.10								
			0.XXX	±.050								
		angular	0°	±2°	www.fci.com							

SHORT DETECT  
POSITION H2  
SEE NOTE 14

SEE NOTE 6



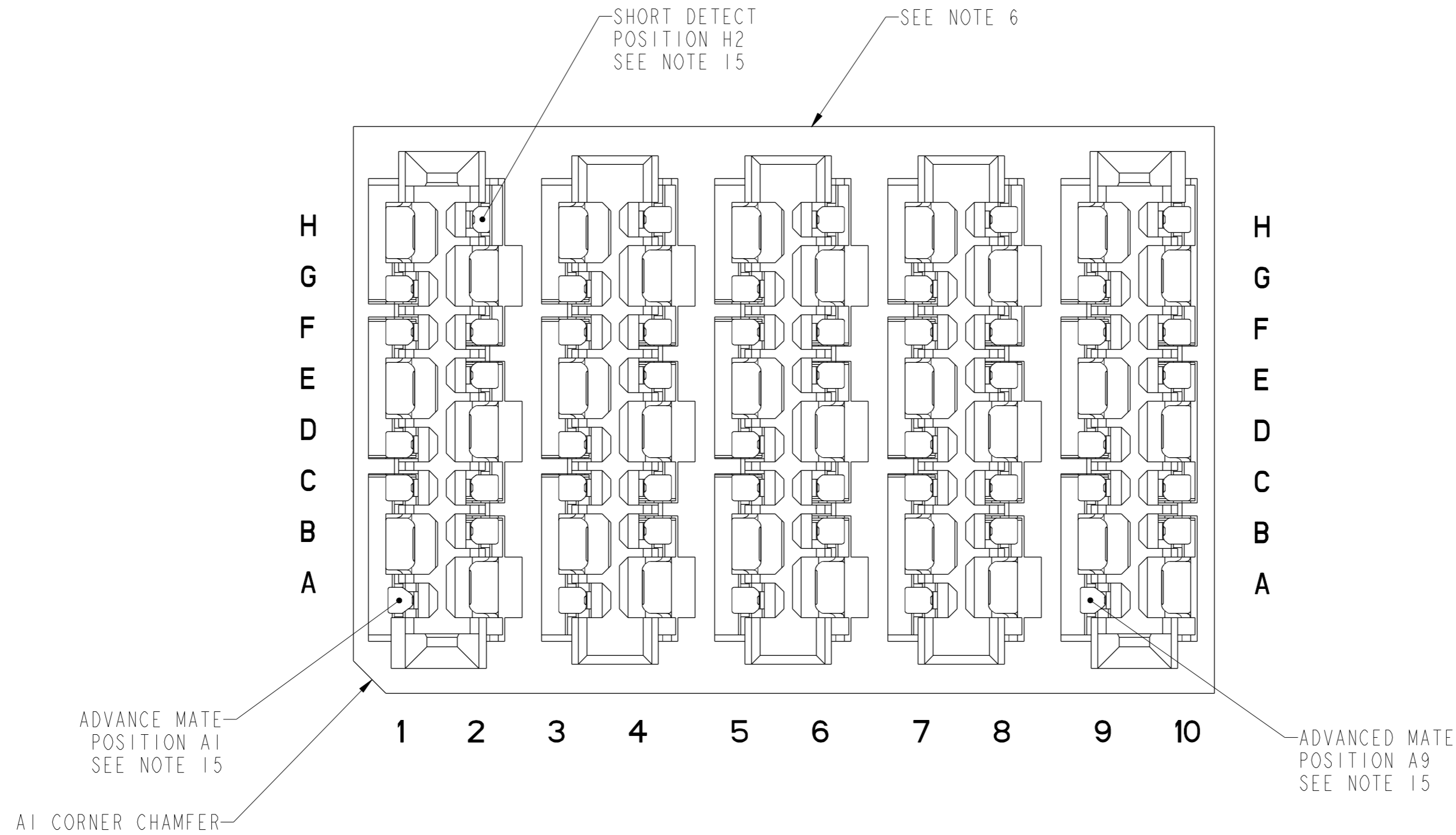
AI CORNER CHAMFER

10124414-301LF  
SHORT DETECT CONNECTOR  
SHORT DETECT POSITION IS H2 ONLY  
FOR ALL OTHER DIMENSIONS SEE SHEETS 1 & 2



Copyright FCI.

spec ref	---	dr	Daniel Xiao	201401/20	projection	MM	size	A2	scale	10:1
tolerance std	ASME Y14.5M	eng	Terry Luo	201505/14			ecn no	-	rel level	Released
TOLERANCES UNLESS OTHERWISE SPECIFIED		chr	Martin Li	201505/14						
surface		linear	0.X	±.3		product family ExaMAX	title ExaMAX VERTICAL HEADER ASS'Y, 2 PAIR, 80 POS, 10 IMLA	no 10124414	rev A	cat. no. SEE TABLE
			0.XX	±.10						
			0.XXX	±.050						
		angular	0°	±2°	www.fci.com	Product - Customer Drw	sheet 4 of 17			

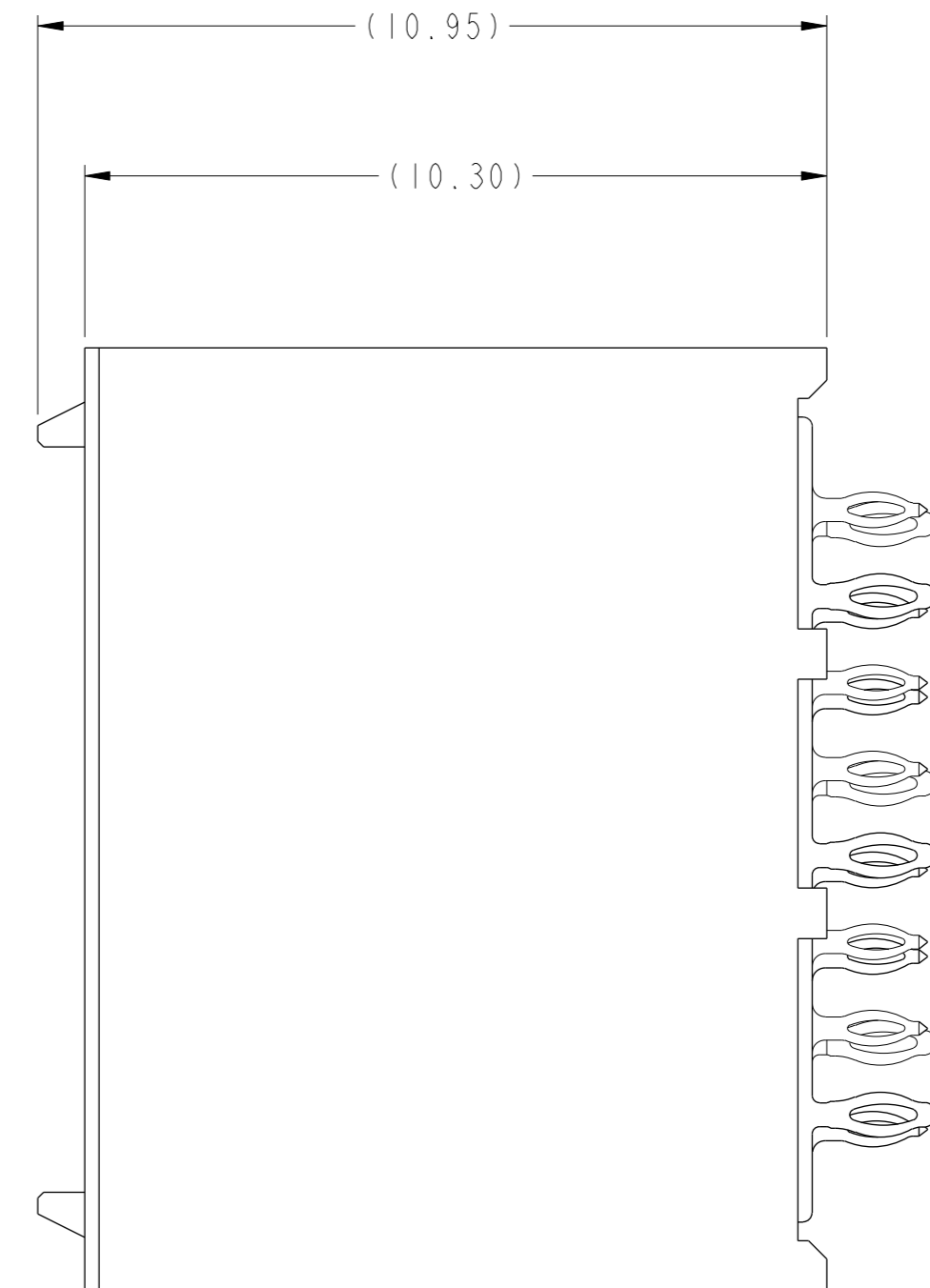
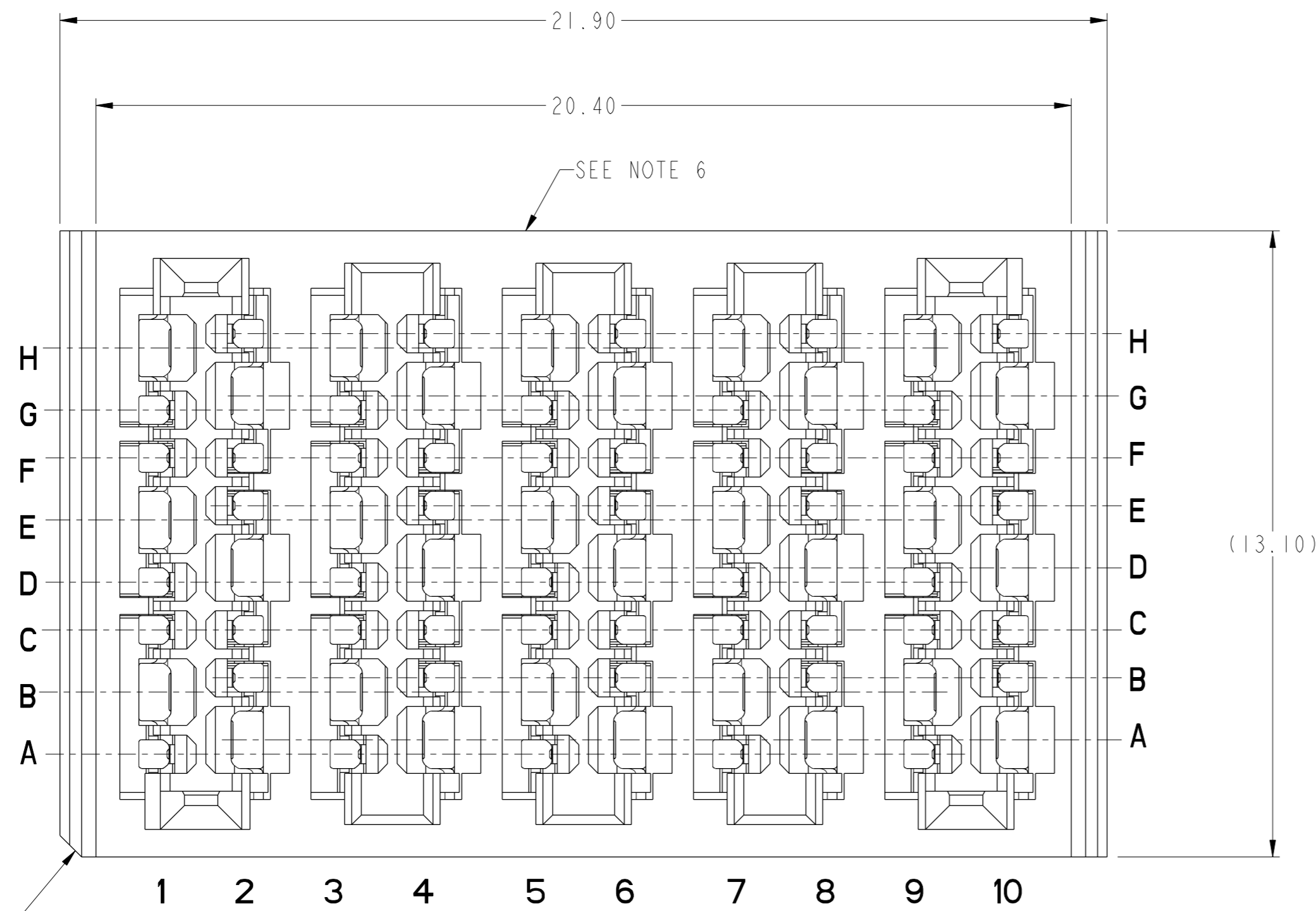


10124414-401LF  
 ADVANCED MATE/SHORT DETECT CONNECTOR  
 ADVANCED MATE POSITIONS ARE POSITIONS A1 AND A9 ONLY  
 SHORT DETECT POSITION IS H2 ONLY  
 FOR ALL OTHER DIMENSIONS SEE SHEETS 1 & 2



Copyright FCI.

spec ref	---	dr	Daniel Xiao	201401/20	projection	MM	size	A2	scale	10:1												
tolerance std	ASME Y14.5M	eng	Terry Luo	201505/14			ecn no	-	rel level	Released												
TOLERANCES UNLESS OTHERWISE SPECIFIED		chr	Martin Li	201505/14																		
surface	<table border="1"> <tr> <td>linear</td> <td>0.X</td> <td>±.3</td> </tr> <tr> <td></td> <td>0.XX</td> <td>±.10</td> </tr> <tr> <td></td> <td>0.XXX</td> <td>±.050</td> </tr> <tr> <td>angular</td> <td>0°</td> <td>±2°</td> </tr> </table>	linear	0.X	±.3		0.XX	±.10		0.XXX	±.050	angular	0°	±2°	appr	Collins Lu	201505/14	product family	ExaMAX	no	10124414	rev	A
linear	0.X	±.3																				
	0.XX	±.10																				
	0.XXX	±.050																				
angular	0°	±2°																				
				title ExaMAX VERTICAL HEADER ASS'Y, 2 PAIR, 80 POS, 10 IMLA		cat. no. SEE TABLE		Product - Customer Drw		sheet 5 of 17												



A1 CORNER CHAMFER

10124414-Y02LF (10124414-102LF SHOWN)  
 END WALLED CONNECTOR  
 FOR ALL DIMENSIONS SEE SHEET 1

spec ref	---	dr	Daniel Xiao	2014/01/20	projection	MM	size	A2	scale	10:1		
tolerance std	ASME Y14.5M	eng	Terry Luo	2015/05/14			ecn no	-	rel level	Released		
TOLERANCES UNLESS OTHERWISE SPECIFIED		chr	Martin Li	2015/05/14								
surface		linear	0.X	±.3		product family ExaMAX	title ExaMAX VERTICAL HEADER ASS'Y, 2 PAIR, 80 POS, 10 IMLA	cat. no. SEE TABLE	Product - Customer Drw	sheet 6 of 17		
		0.XX	±.10	www.fci.com							rel level Released	rev A
		0.XXX	±.050									

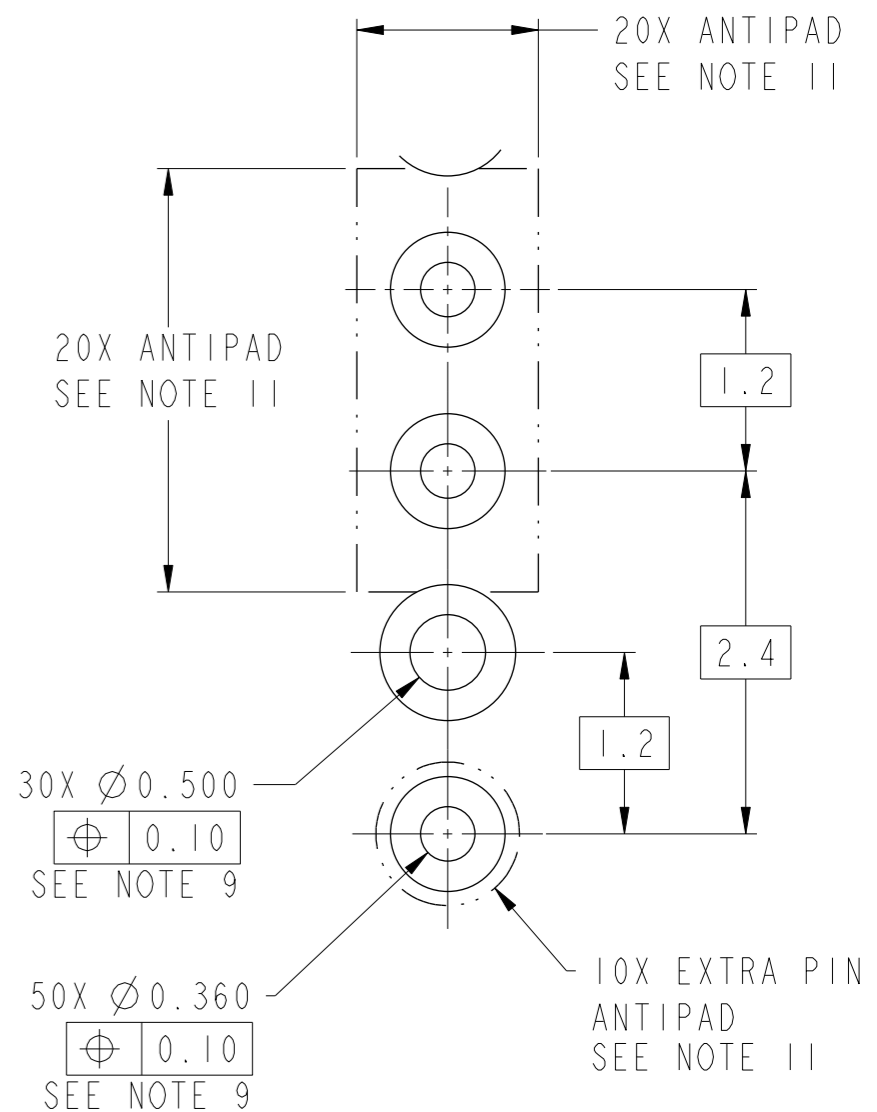
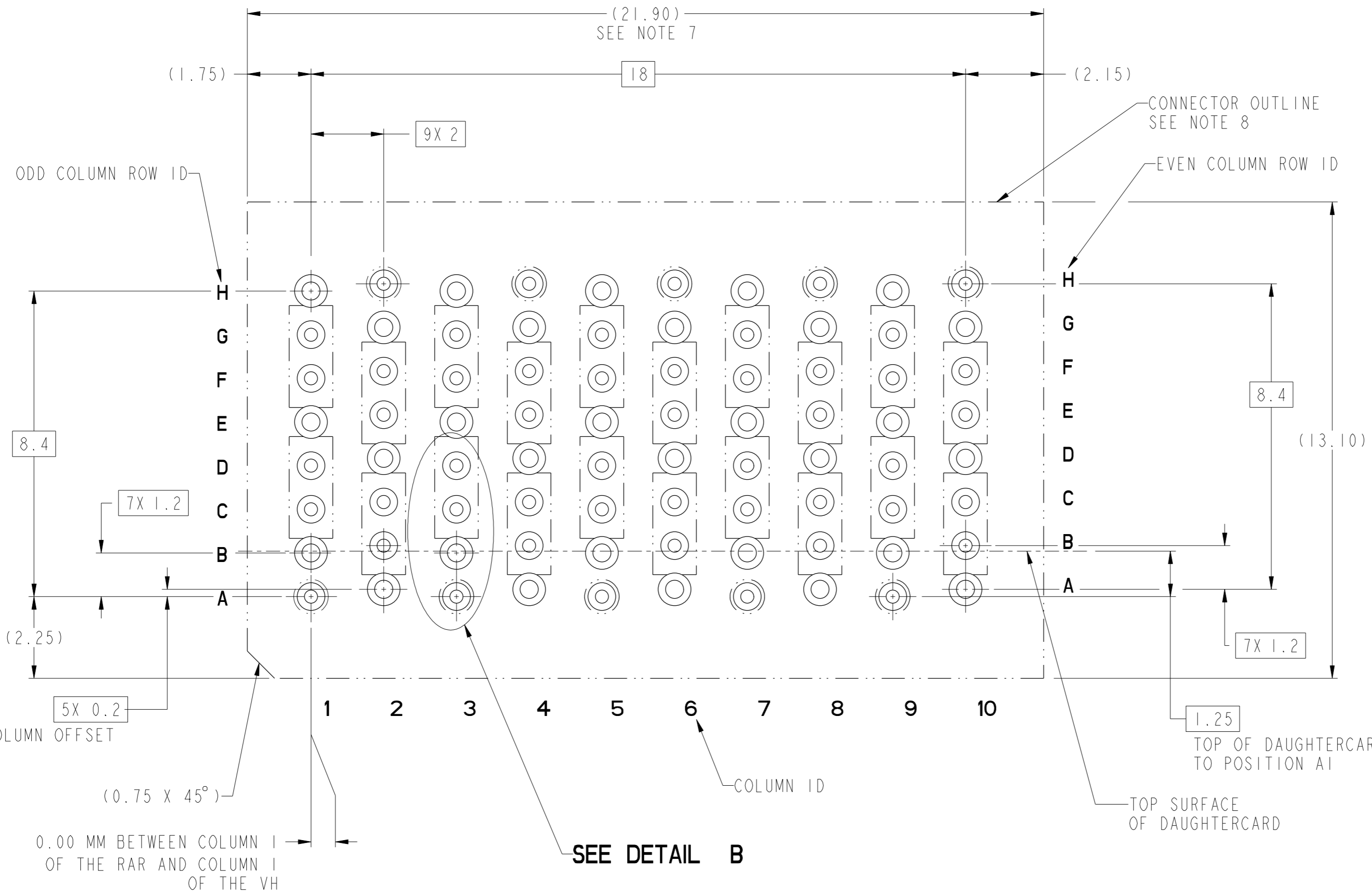
PDS: Rev :A

STATUS:Released

Printed: May 15, 2015

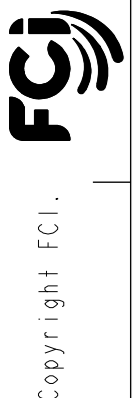


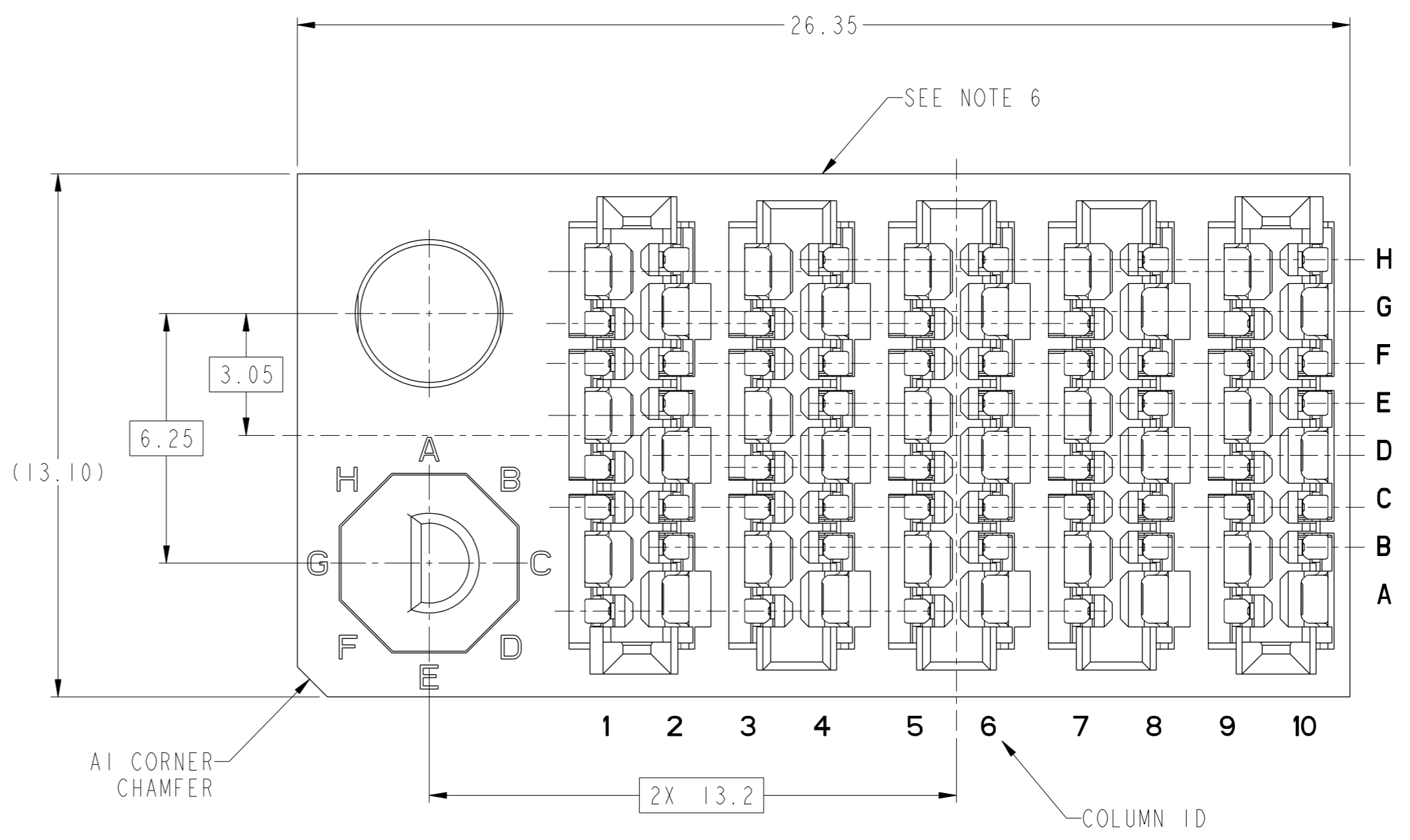
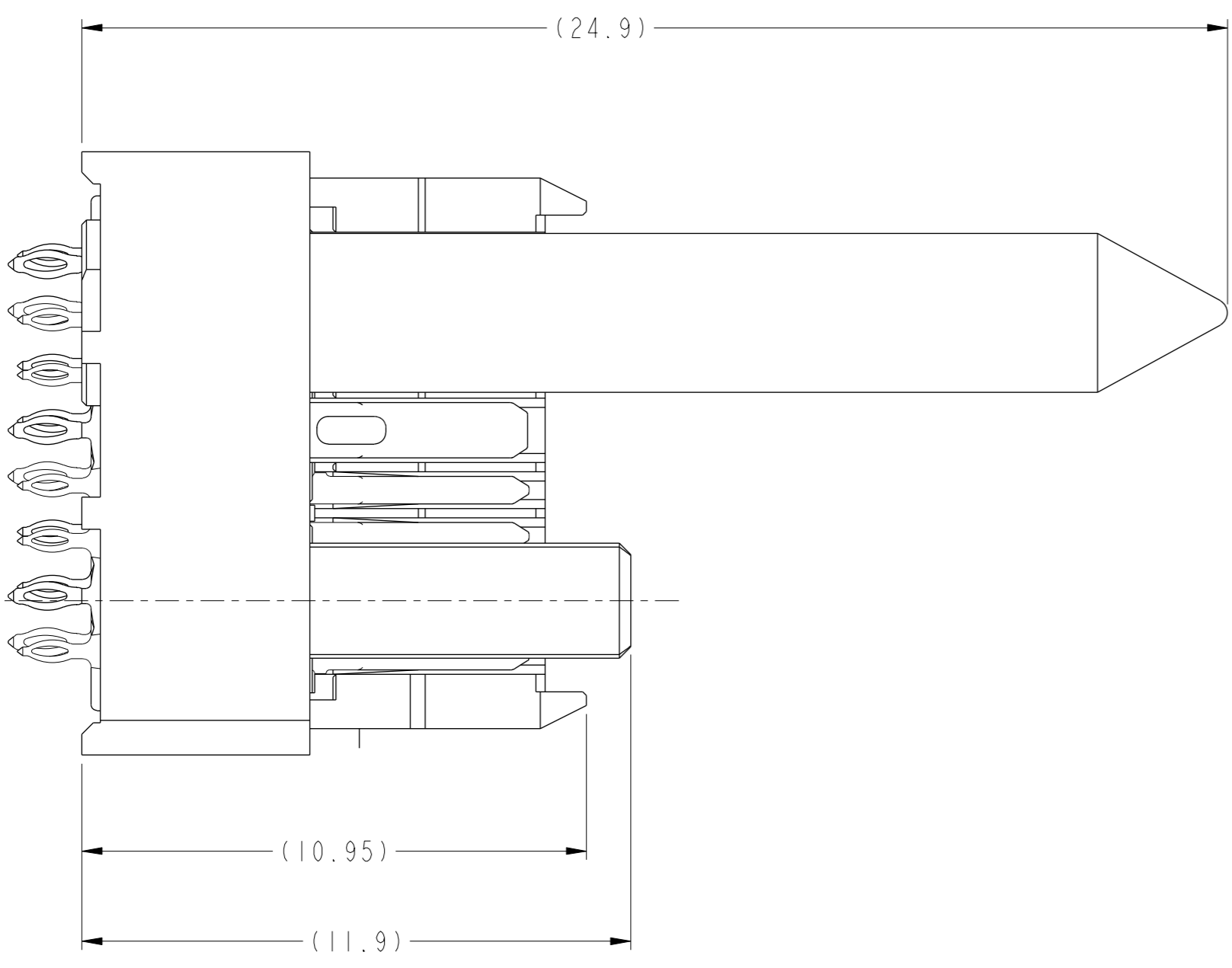
Copyright FCI.



**RECOMMENDED PCB LAYOUT FOR  
10124414-Y02LF (END WALLED CONNECTOR) COMPONENT SIDE  
SEE NOTES 7, 8, 9, & 11**

spec ref	---	dr	Daniel Xiao	201401/20	projection	MM	size	A2	scale	10:1
tolerance std	ASME Y14.5M	eng	Terry Luo	201505/14			ecn no	-	rel level	Released
TOLERANCES UNLESS OTHERWISE SPECIFIED		chr	Martin Li	201505/14						
surface	✓	appr	Collins Lu	201505/14	product family	ExaMAX	diag no	10124414	rev	A
linear	0.X ±.3 0.XX ±.10 0.XXX ±.050	www.fci.com		cat. no.	SEE TABLE	Product - Customer Drw	sheet 7 of 17			
angular	0° ±2°									





10124414-Y1ALF THRU -Y1JLF  
 RIGHT GUIDANCE CONNECTOR (SEE NOTE 17)  
 FOR ALL OTHER DIMENSIONS SEE SHEET 1

Copyright FCI.  
**FCI**

spec ref	---	dr	Daniel Xiao	2014/01/20	projection	MM	size	A2	scale	10:1	
tolerance std	ASME Y14.5M	eng	Terry Luo	2015/05/14			ecn no	-	rel level	Released	
TOLERANCES UNLESS OTHERWISE SPECIFIED		chr	Martin Li	2015/05/14							product family
surface		linear	0.X	±.3		title ExaMAX VERTICAL HEADER ASS'Y, 2 PAIR, 80 POS, 10 IMLA	no 10124414	rev A	cat. no. SEE TABLE	Product - Customer Draw	sheet 8 of 17
			0.XX	±.10							
			0.XXX	±.050							
		angular	0°	±2°	www.fci.com						

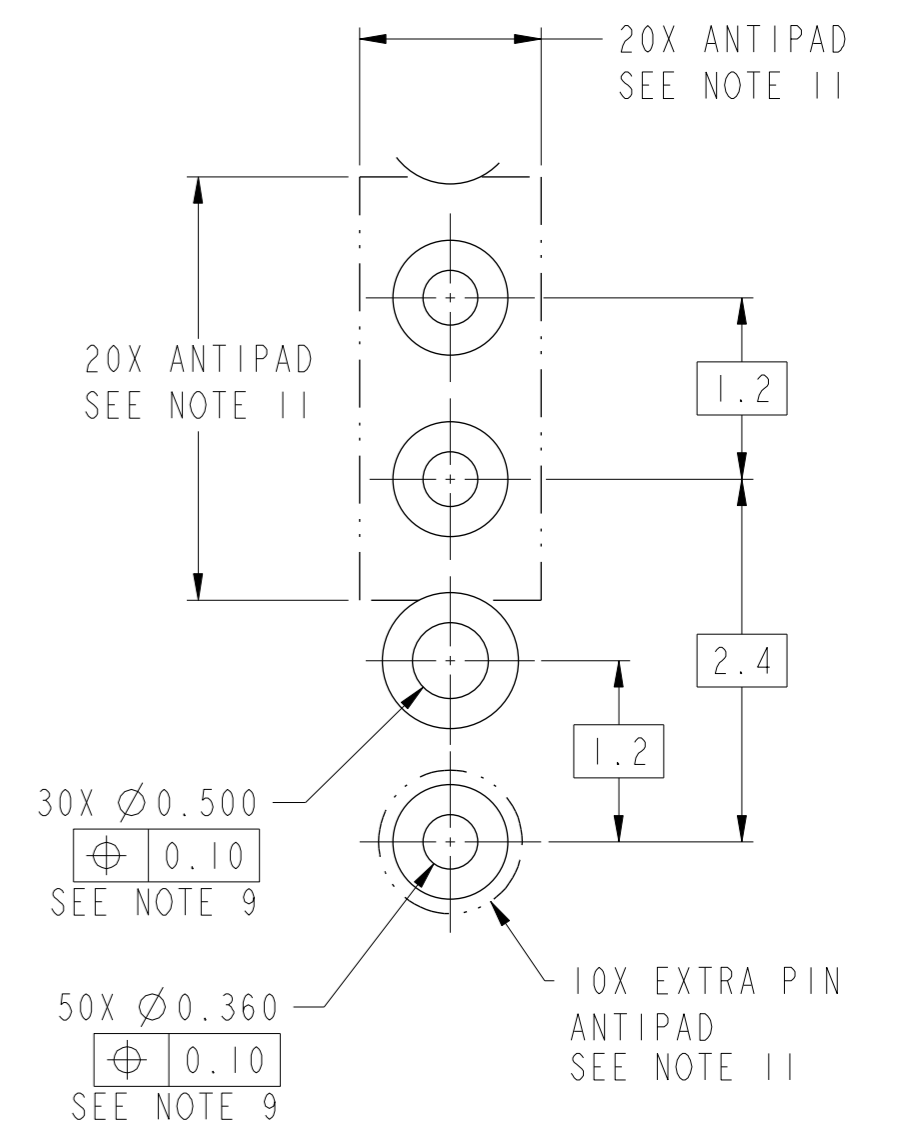
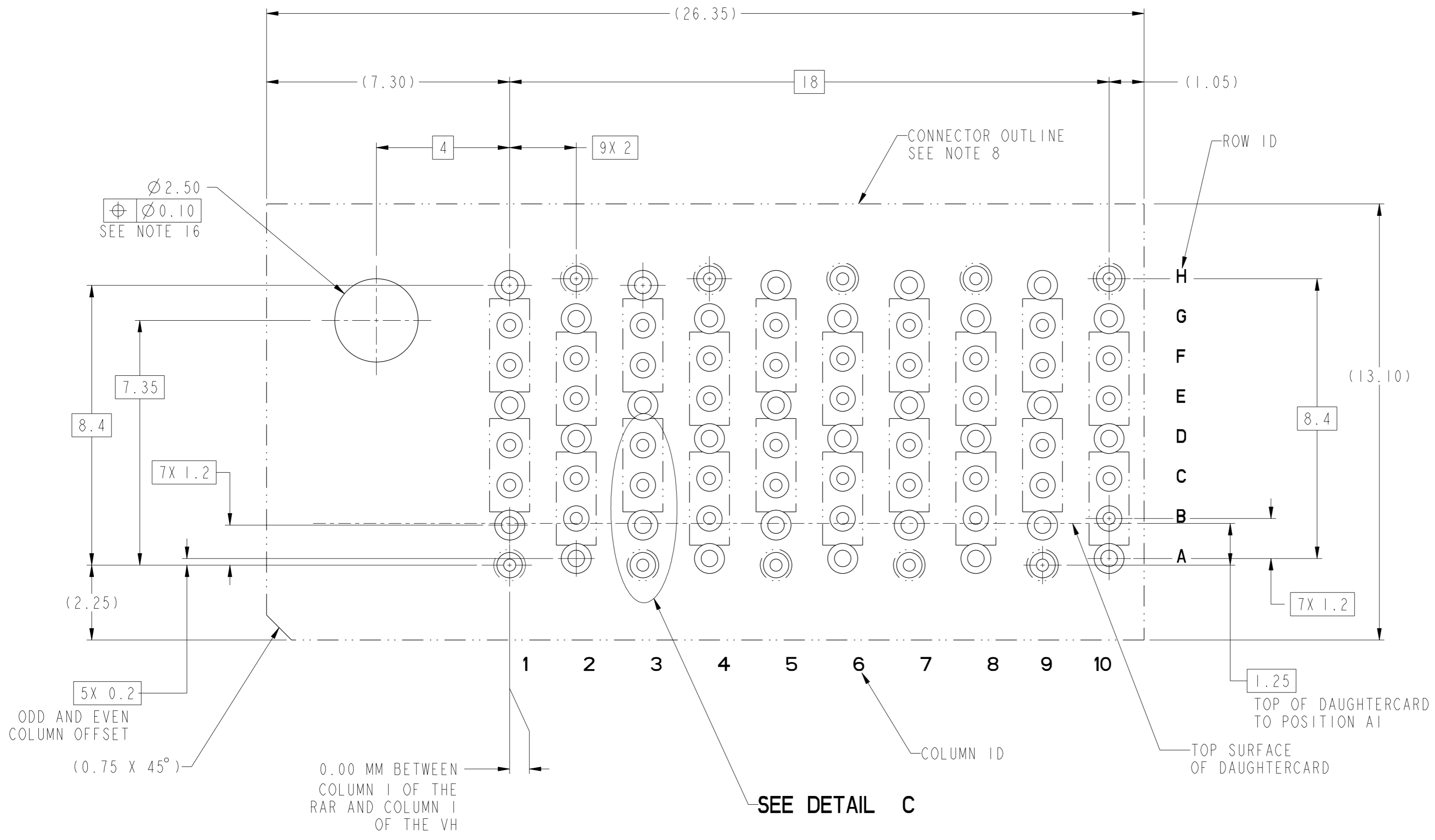
PDS: Rev :A

STATUS:Released

Printed: May 15, 2015



Ø 2.50  
 ⊕ 0.10  
 SEE NOTE 16



DETAIL C  
 SCALE 20:1

RECOMMENDED PCB LAYOUT FOR  
 10124414-Y1YLF w/o END WALLS  
 COMPONENT SIDE  
 SEE NOTES 8, 9, 11 & 16

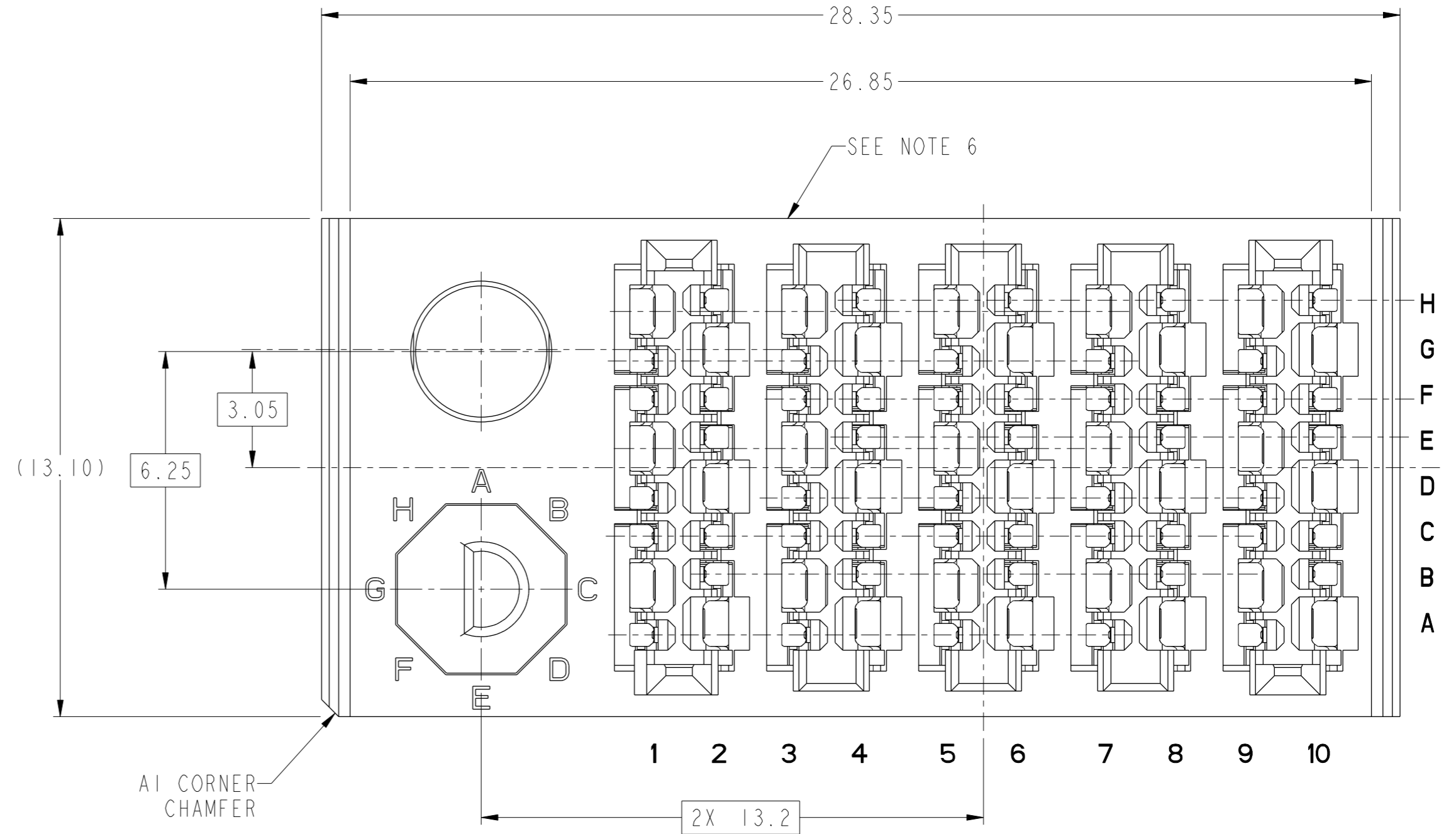
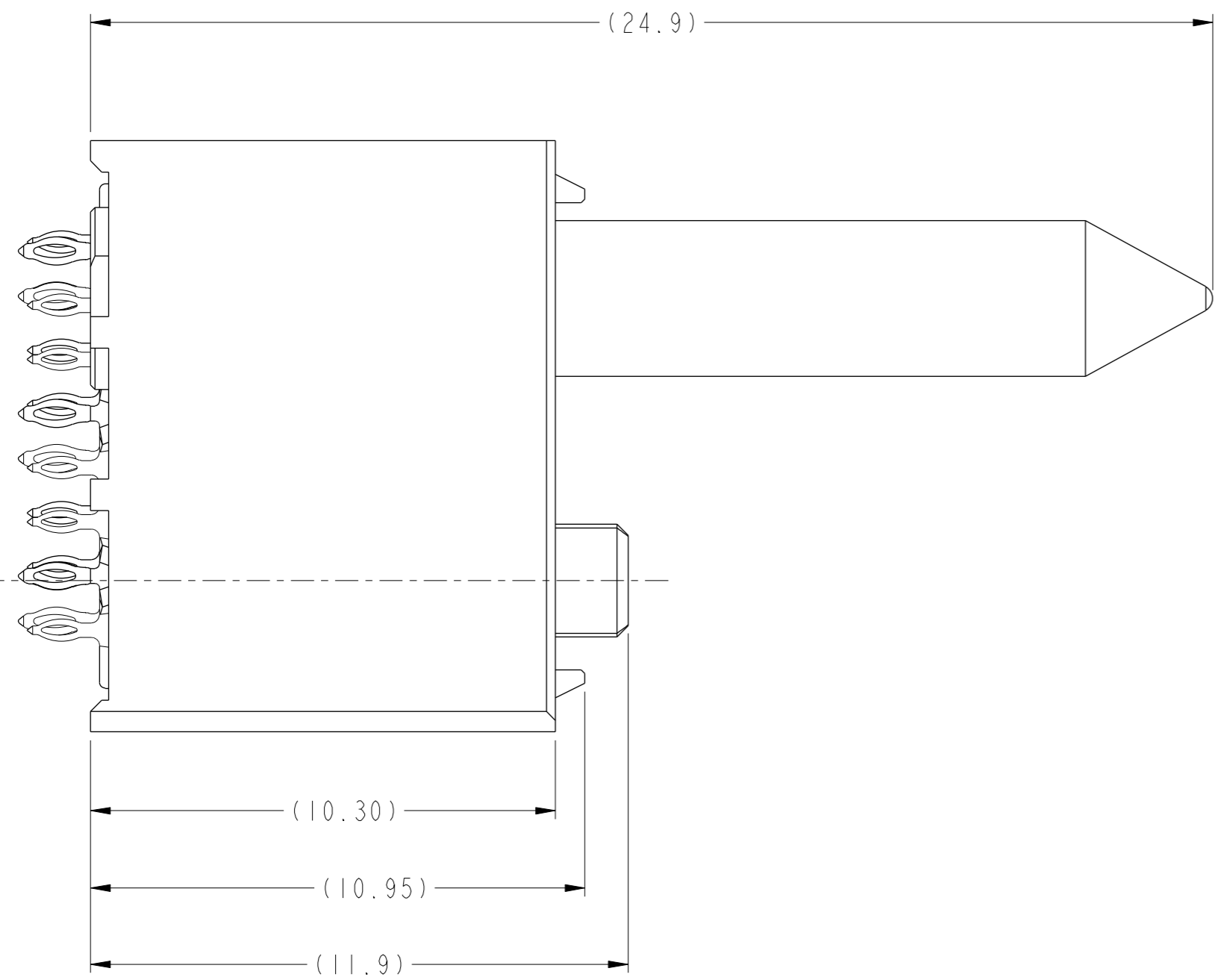
spec ref	---	dr	Daniel Xiao	2014/01/20	projection	MM	size	A2	scale	10:1										
tolerance std	ASME Y14.5M	eng	Terry Luo	2015/05/14			ecn no	-	rel level	Released										
TOLERANCES UNLESS OTHERWISE SPECIFIED		chr	Martin Li	2015/05/14																
		appr	Collins Lu	2015/05/14																
surface	<table border="1"> <tr> <td>linear</td> <td>0.X</td> <td>±.3</td> </tr> <tr> <td></td> <td>0.XX</td> <td>±.10</td> </tr> <tr> <td></td> <td>0.XXX</td> <td>±.050</td> </tr> <tr> <td>angular</td> <td>0°</td> <td>±2°</td> </tr> </table>	linear	0.X	±.3		0.XX	±.10		0.XXX	±.050	angular	0°	±2°			product family ExaMAX		title ExaMAX VERTICAL HEADER ASS'Y, 2 PAIR, 80 POS, 10 IMLA	no 10124414	rev A
linear	0.X	±.3																		
	0.XX	±.10																		
	0.XXX	±.050																		
angular	0°	±2°																		
		www.fci.com		cat. no. SEE TABLE	Product - Customer Draw		sheet 9 of 17													

PDS: Rev :A

STATUS:Released

Printed: May 15, 2015

Copyright FCI.



10124414-Y1LLF THRU -Y1WLF  
 RIGHT GUIDANCE CONNECTOR w/END WALLS (SEE NOTE 17)  
 FOR ALL OTHER DIMENSIONS SEE SHEET 1



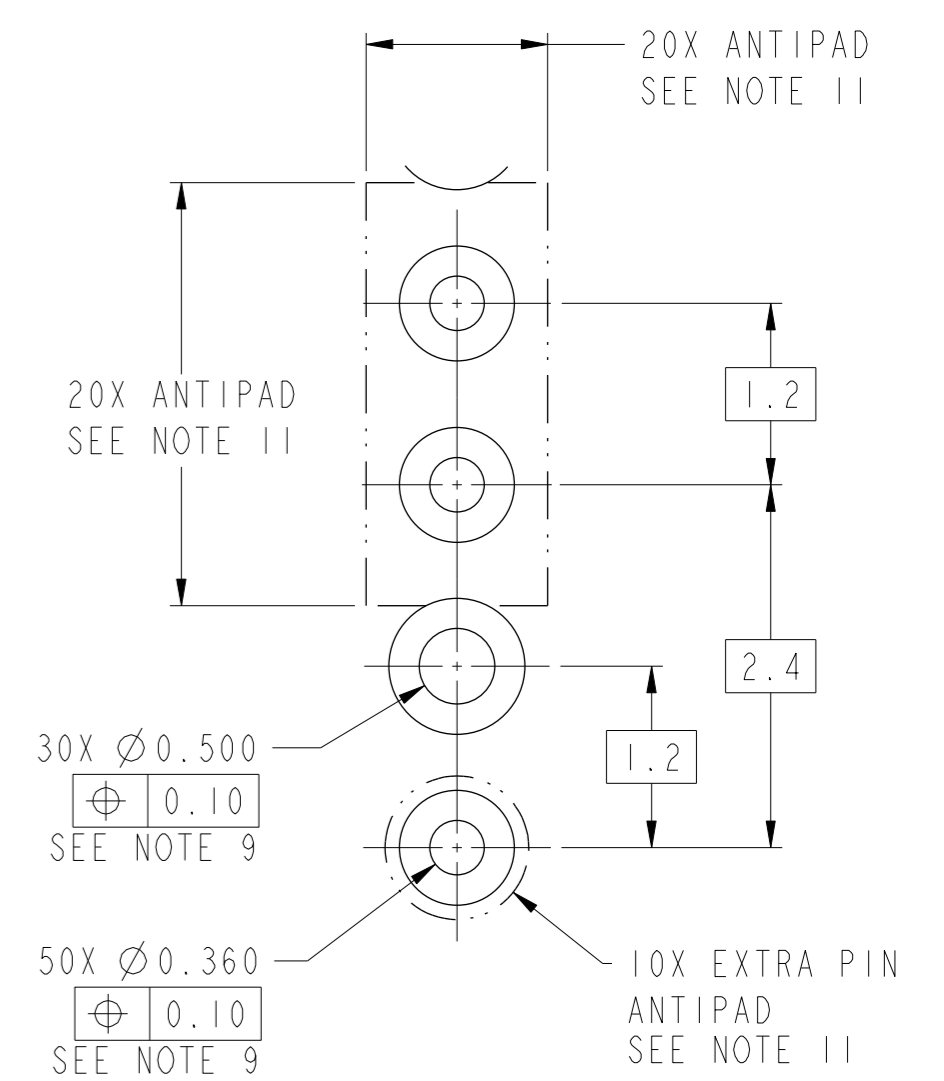
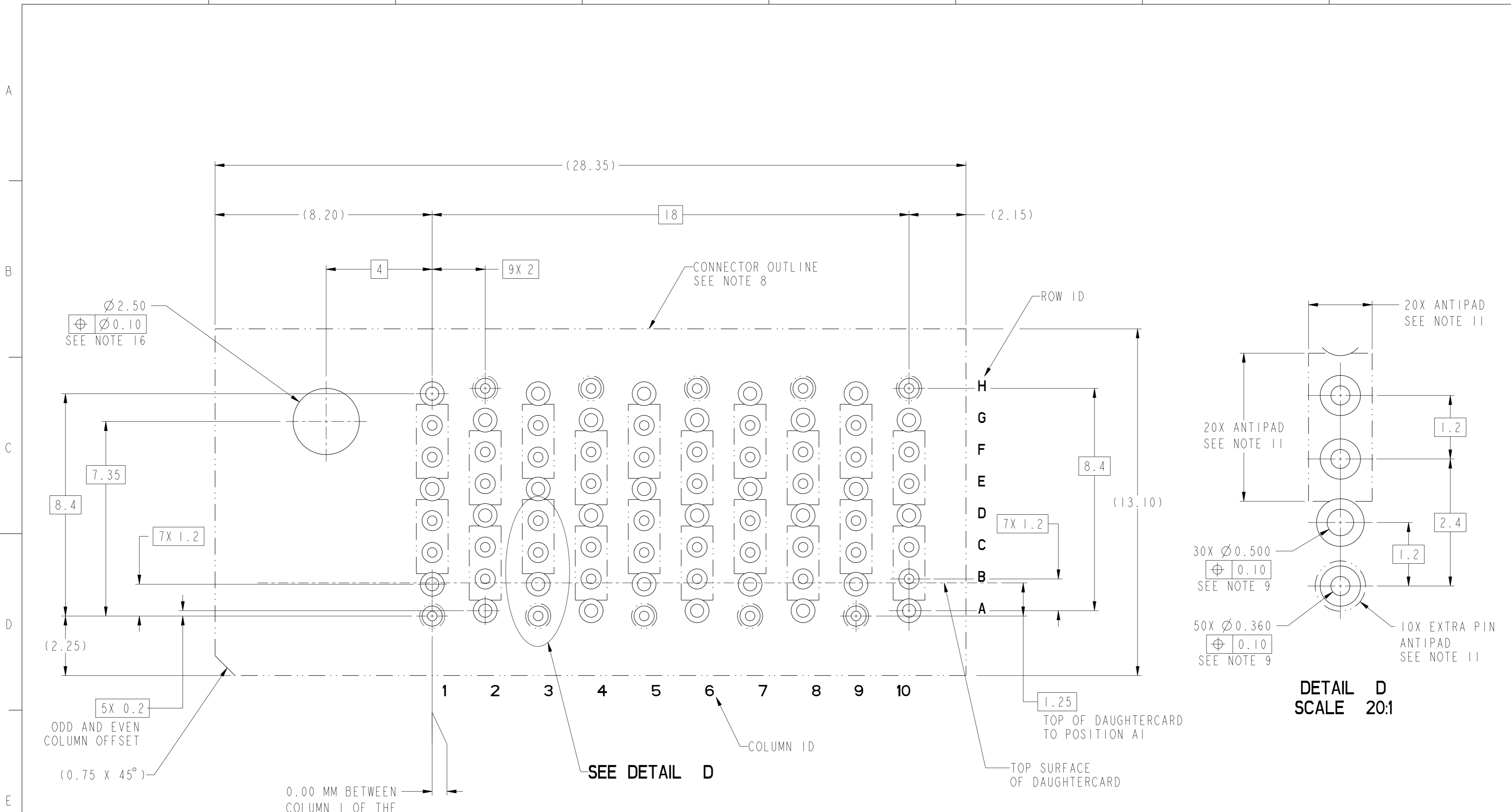
Copyright FCI.

spec ref	---	dr	Daniel Xiao	2014/01/20	projection	MM	size	A2	scale	101:1
tolerance std	ASME Y14.5M	eng	Terry Luo	2015/05/14			ecn no	-	rel level	Released
TOLERANCES UNLESS OTHERWISE SPECIFIED		chr	Martin Li	2015/05/14			product family	ExaMAX	rel level	Released
surface	✓	appr	Collins Lu	2015/05/14			title	ExaMAX VERTICAL HEADER	cat. no.	SEE TABLE
	linear	0.X	±.3							
		0.XX	±.10							
		0.XXX	±.050							
	angular	0°	±2°							

PDS: Rev :A

STATUS:Released

Printed: May 15, 2015



**RECOMMENDED PCB LAYOUT FOR  
10124414-Y1YLF w/END WALLS  
COMPONENT SIDE  
SEE NOTES 8, 9, 11 & 16**

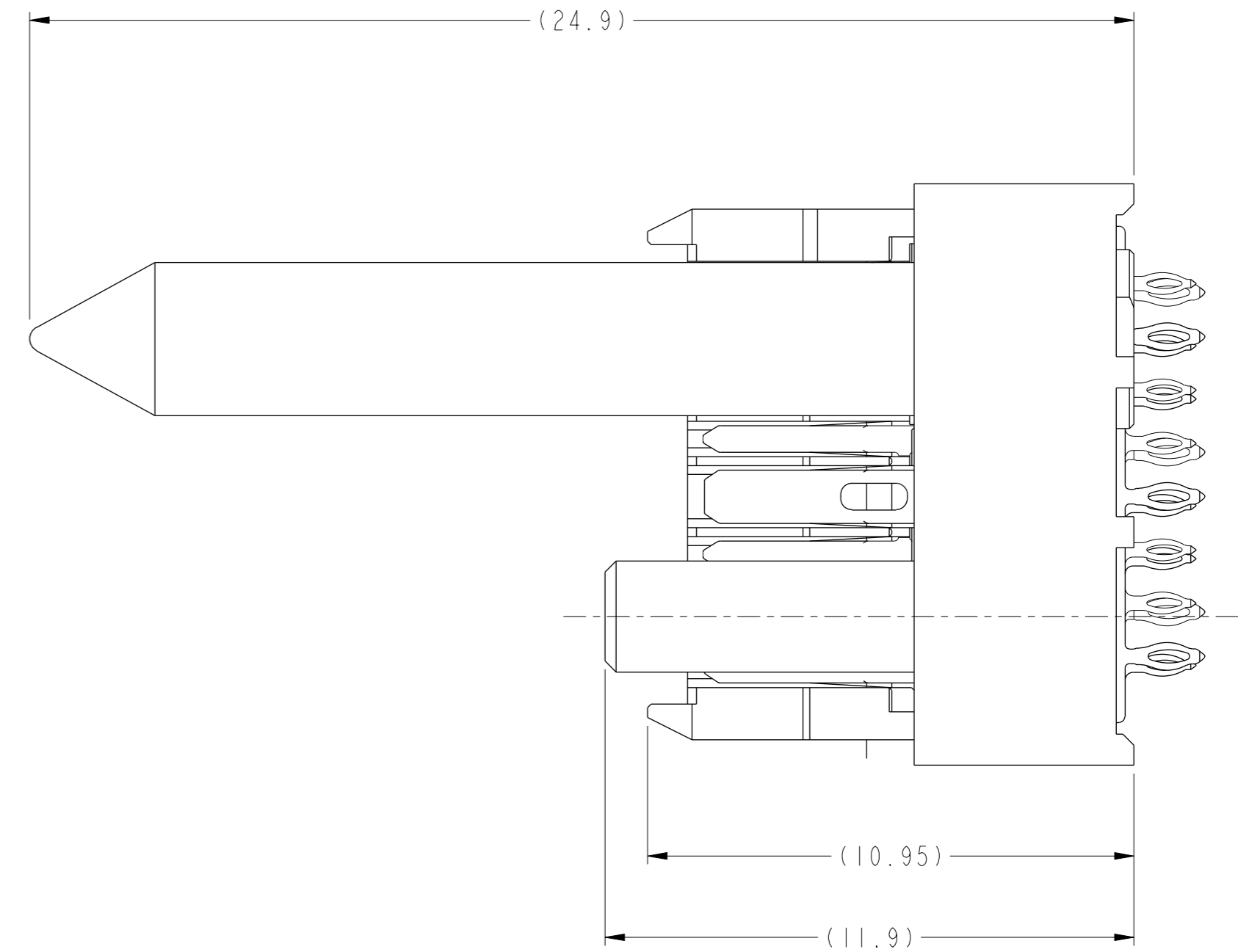
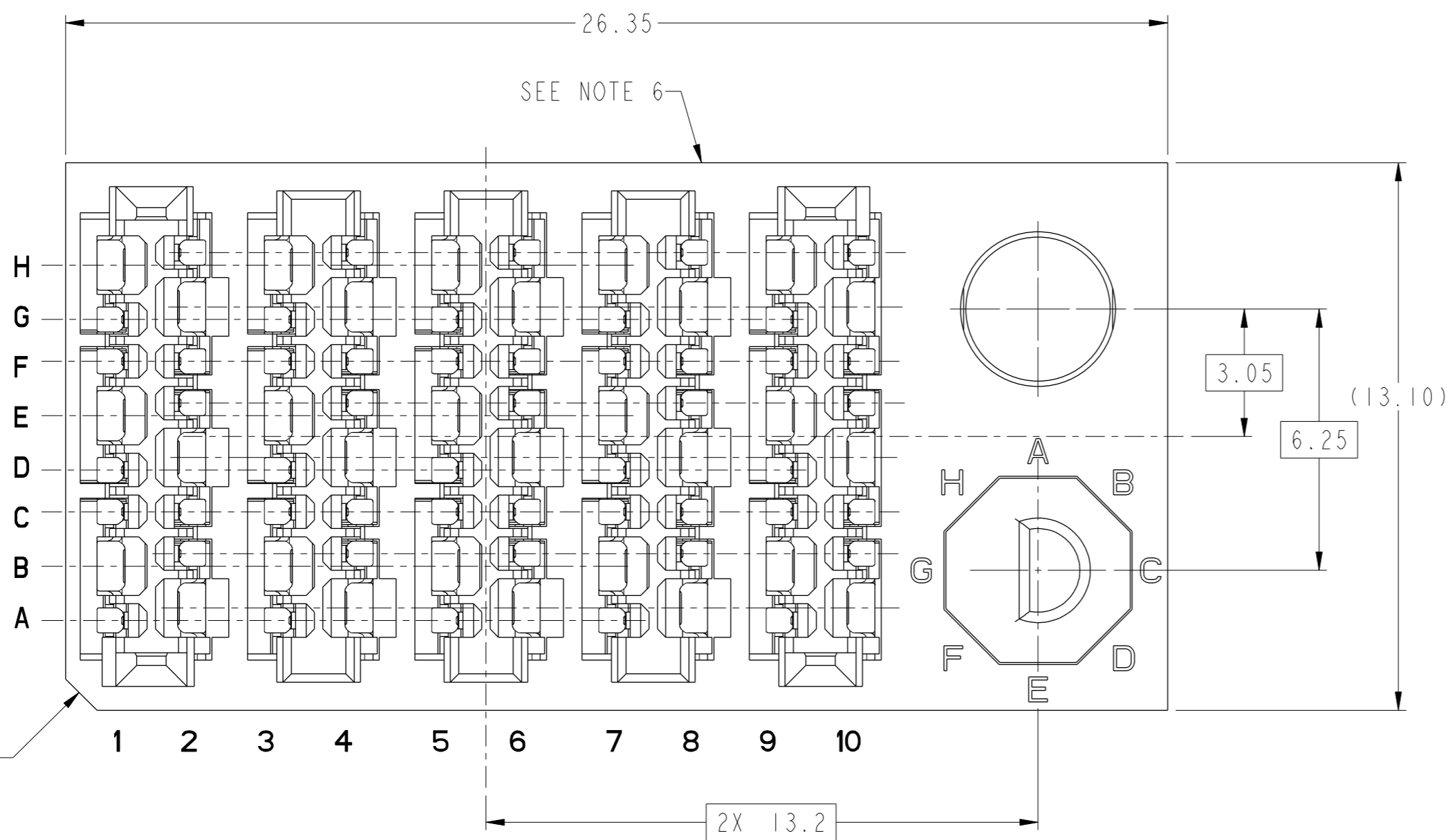
Copyright FCI.

spec ref	---	dr	Daniel Xiao	2014/01/20	projection	MM	size	A2	scale	10:1	
tolerance std	ASME Y14.5M	eng	Terry Luo	2015/05/14			ecn no	-	rel level	Released	
TOLERANCES UNLESS OTHERWISE SPECIFIED		chr	Martin Li	2015/05/14							
surface	✓	appr	Collins Lu	2015/05/14	product family	ExaMAX	cat. no.	SEE TABLE	Product - Customer Drw	sheet 11 of 17	
	linear	0.X	±.3		TITLE		ExaMAX VERTICAL HEADER	diag no	10124414	rev	A
		0.XX	±.10		ASS'Y, 2 PAIR, 80 POS, 10 IMLA						
		0.XXX	±.050		www.fci.com						
	angular	0°	±2°								

PDS: Rev :A

STATUS:Released

Printed: May 15, 2015



10124414-Y2ALF THRU -Y2JLF  
 LEFT GUIDANCE CONNECTOR (SEE NOTE 17)  
 FOR ALL DIMENSIONS SEE SHEET 1

A1 CORNER  
 CHAMFER

2X 13.2

3.05  
 6.25  
 (13.10)

(24.9)

(10.95)

(11.9)

spec ref	---	dr	Daniel Xiao	2014/01/20	projection	MM	size	A2	scale	10:1			
tolerance std	ASME Y14.5M	eng	Terry Luo	2015/05/14			ecn no	-	rel level	Released			
TOLERANCES UNLESS OTHERWISE SPECIFIED		chr	Martin Li	2015/05/14									
surface		linear	0.X	±.3		product family ExaMAX	title ExaMAX VERTICAL HEADER ASS'Y, 2 PAIR, 80 POS, 10 IMLA	cat. no. SEE TABLE	Product - Customer Draw	sheet 12 of 17			
		0.XX	±.10	www.fci.com							cat. no. SEE TABLE	Product - Customer Draw	sheet 12 of 17
		0.XXX	±.050										
	angular	0°	±2°										

PDS: Rev : A

STATUS: Released

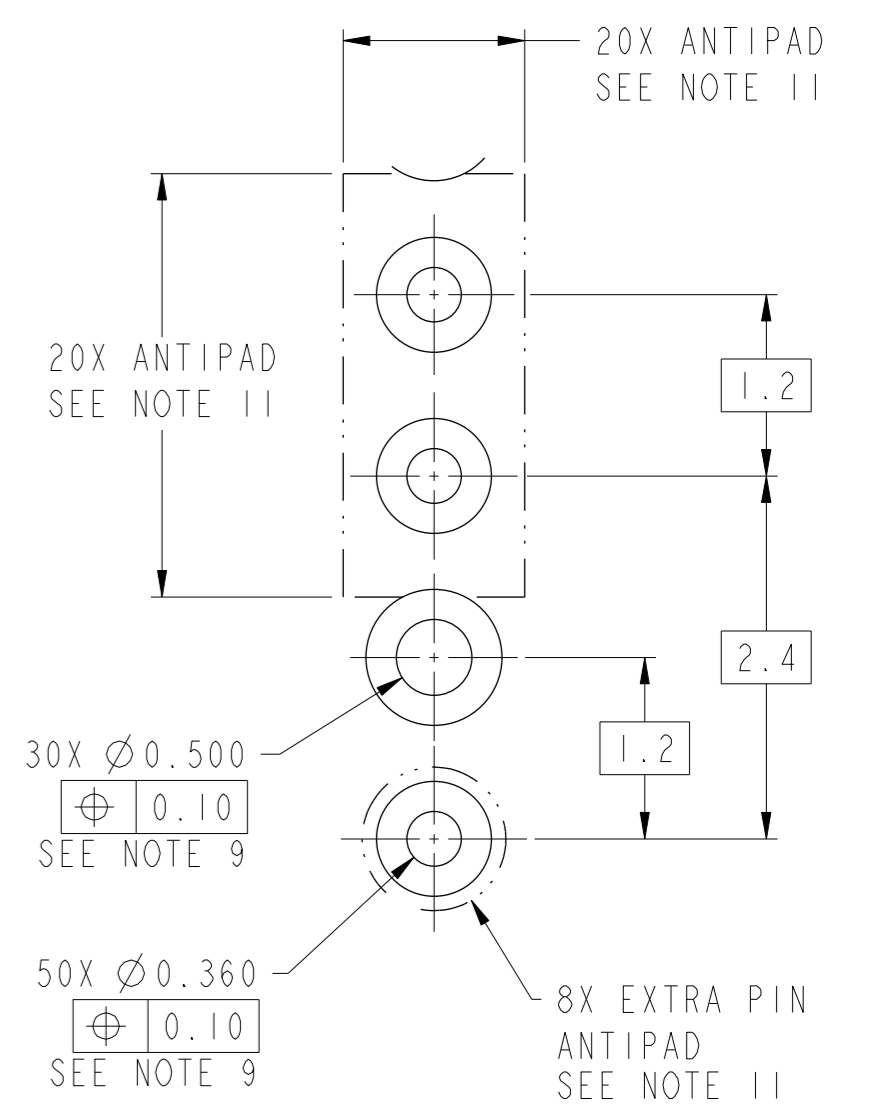
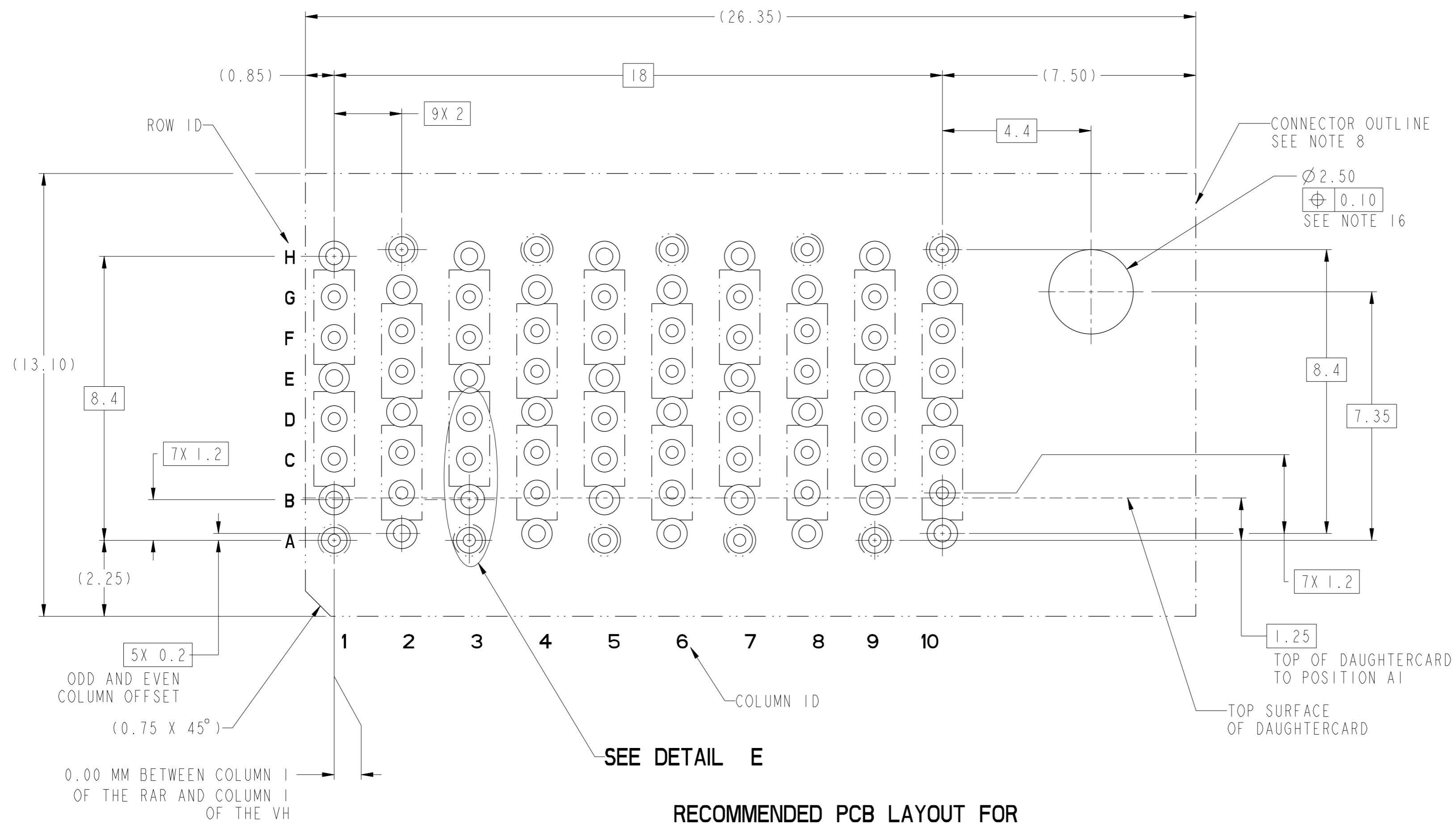
Printed: May 15, 2015



Copyright FCI.

1 2 3 4 5 6 7 8

A B C D E F



**RECOMMENDED PCB LAYOUT FOR  
10124414-Y2YLF w/o END WALLS  
COMPONENT SIDE  
SEE NOTES 8, 9, 11, & 16**



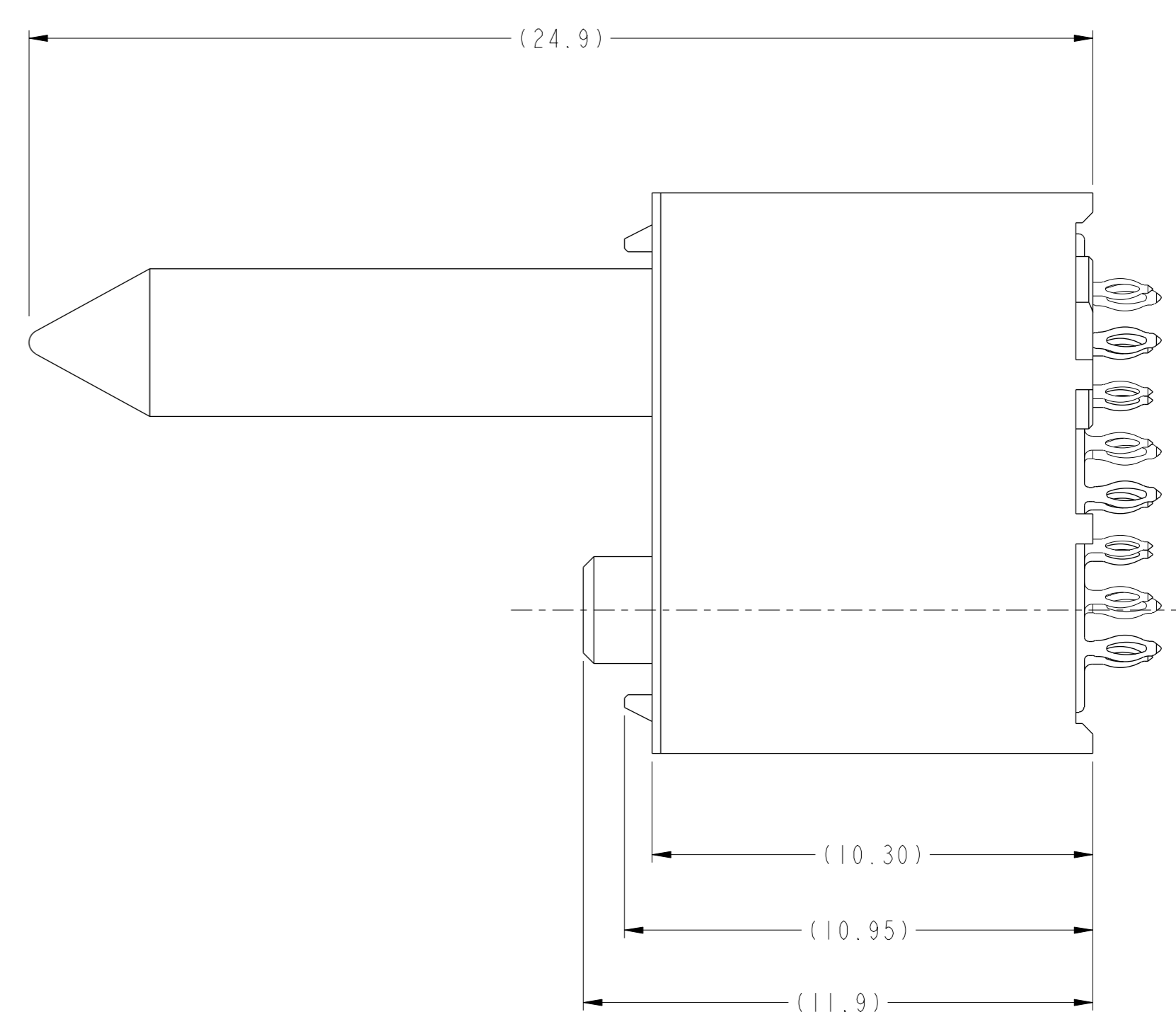
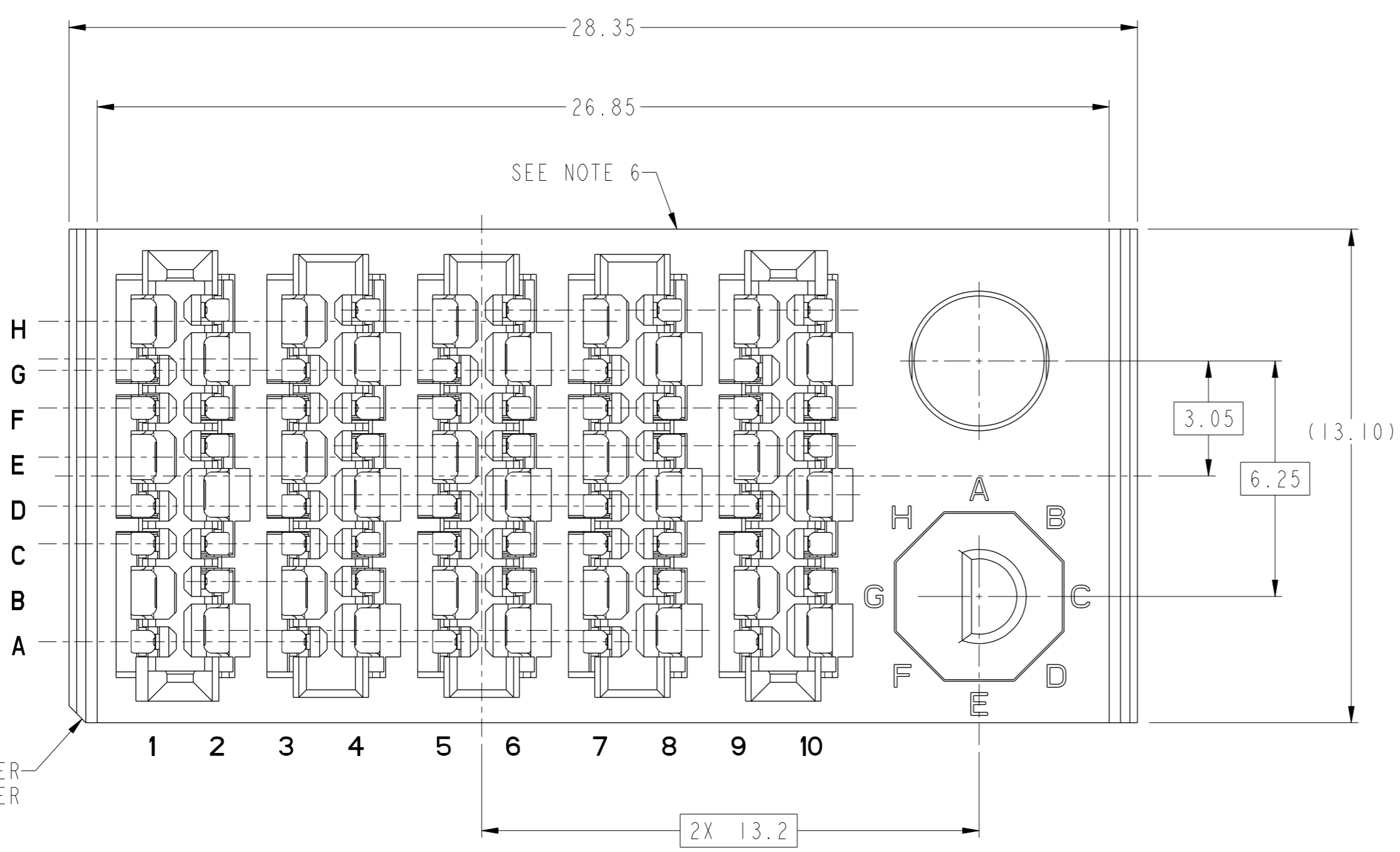
Copyright FCI.

spec ref	---	dr	Daniel Xiao	2014/01/20	projection	MM	size	A2	scale	10:1
tolerance std	ASME Y14.5M	eng	Terry Luo	2015/05/14			ecn no	-	rel level	Released
TOLERANCES UNLESS OTHERWISE SPECIFIED		chr	Martin Li	2015/05/14						
surface	✓	appr	Collins Lu	2015/05/14	product family	ExaMAX	diag no	10124414	rev	A
linear	0.X ±.3 0.XX ±.10 0.XXX ±.050	www.fci.com		cat. no.	SEE TABLE	Product - Customer Drw	sheet 13 of 17			
angular	0° ±2°									

PDS: Rev :A

STATUS:Released

Printed: May 15, 2015



10124414-Y2LLF THRU -Y2WLF  
 LEFT GUIDANCE CONNECTOR w/END WALLS (SEE NOTE 17)  
 FOR ALL OTHER DIMENSIONS SEE SHEET 1



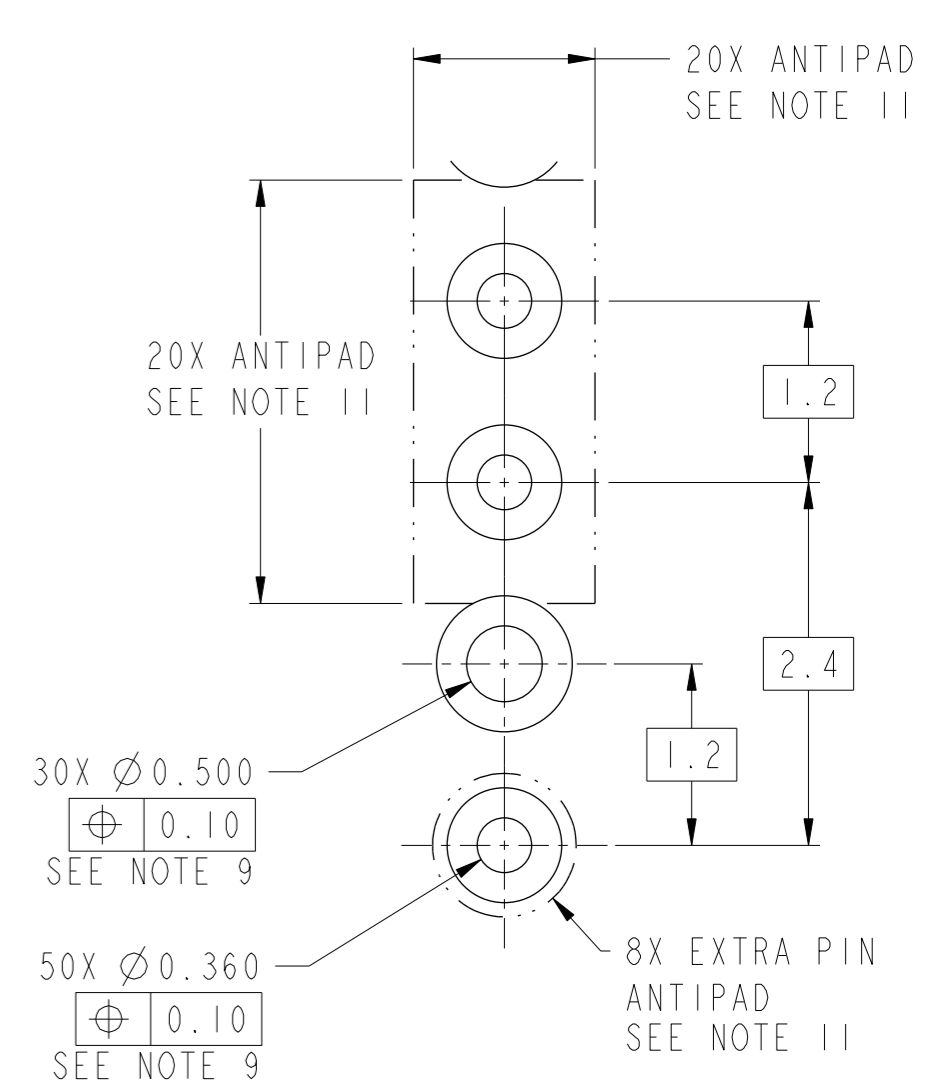
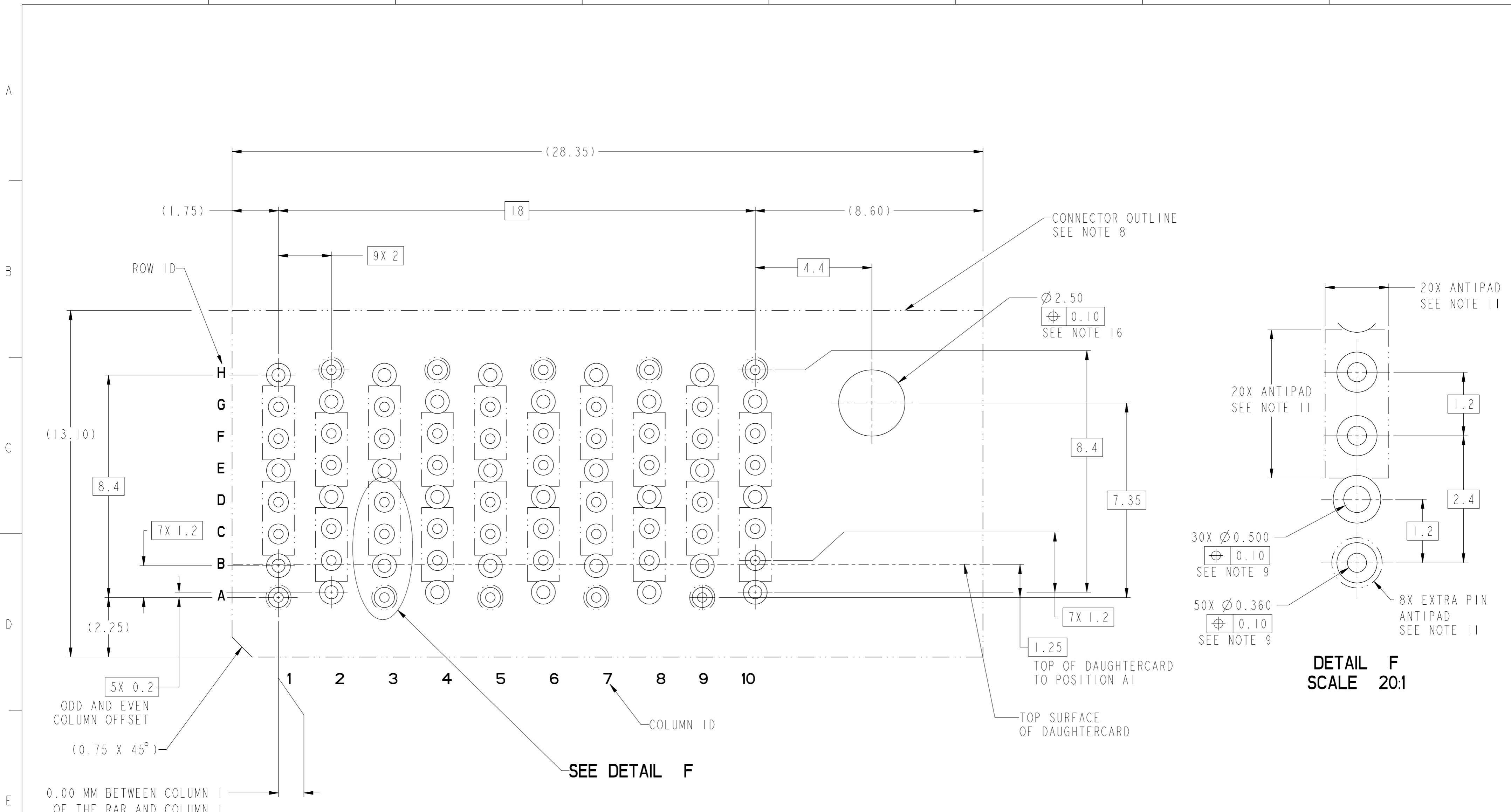
Copyright FCI.

spec ref	---	dr	Daniel Xiao	2014/01/20	projection	MM	size	A2	scale	10:1	
tolerance std	ASME Y14.5M	eng	Terry Luo	2015/05/14			ecn no	-	rel level	Released	
TOLERANCES UNLESS OTHERWISE SPECIFIED		chr	Martin Li	2015/05/14							product family
surface		linear	0.X	±.3		TITLE ExaMAX VERTICAL HEADER ASS'Y, 2 PAIR, 80 POS, 10 IMLA	no 10124414	rev A	cat. no. SEE TABLE	Product - Customer Draw	sheet 14 of 17
			0.XX	±.10							
			0.XXX	±.050							
		angular	0°	±2°	www.fci.com						

PDS: Rev :A

STATUS:Released

Printed: May 15, 2015



**RECOMMENDED PCB LAYOUT FOR  
10124414-Y2YLF w/END WALLS  
COMPONENT SIDE  
SEE NOTES 8, 9, 11, & 16**

Copyright FCI.

spec ref	---	dr	Daniel Xiao	2014/01/20	projection	MM	size	A2	scale	10:1	
tolerance std	ASME Y14.5M	eng	Terry Luo	2015/05/14			ecn no	-	rel level	Released	
TOLERANCES UNLESS OTHERWISE SPECIFIED		chr	Martin Li	2015/05/14							
surface	✓	appr	Collins Lu	2015/05/14	product family	ExaMAX	cat. no.	SEE TABLE	Product - Customer Drw	sheet 15 of 17	
	linear	0.X	±.3		TITLE		ExaMAX VERTICAL HEADER	diag no	10124414	rev	A
		0.XX	±.10		ASS'Y, 2 PAIR, 80 POS, 10 IMLA						
		0.XXX	±.050		www.fci.com						
	angular	0°	±2°								

PDS: Rev :A

STATUS:Released

Printed: May 15, 2015

10124414 - Y Y Y L F

ASSEMBLY PART NUMBER	DESCRIPTION
10124414-1YYLF	STANDARD MATE
10124414-2YYLF	ADVANCED MATE
10124414-3YYLF	SHORT DETECT
10124414-4YYLF	ADVANCED MATE & SHORT DETECT

MODULE DESCRIPTION	DESIGNATION REPRESENTED IN DASH NUMBER									BASE MODULE
WITHOUT END WALLS (SEE SHEET 1)	01									
WITH END WALLS (SEE SHEET 6)	02									
RIGHT GUIDANCE MODULE, WITHOUT END WALLS (SEE SHEET 8)	<b>1A</b>	<b>1B</b>	<b>1C</b>	<b>1D</b>	<b>1E</b>	<b>1F</b>	<b>1G</b>	<b>1H</b>	<b>1J</b> (NO KEY)	
RIGHT GUIDANCE MODULE, WITH END WALLS (SEE SHEET 10)	<b>1L</b>	<b>1M</b>	<b>1N</b>	<b>1P</b>	<b>1R</b>	<b>1T</b>	<b>1U</b>	<b>1V</b>	<b>1W</b> (NO KEY)	
LEFT GUIDANCE MODULE, WITHOUT END WALLS (SEE SHEET 12)	<b>2A</b>	<b>2B</b>	<b>2C</b>	<b>2D</b>	<b>2E</b>	<b>2F</b>	<b>2G</b>	<b>2H</b>	<b>2J</b> (NO KEY)	
LEFT GUIDANCE MODULE, WITH END WALLS (SEE SHEET 14)	<b>2L</b>	<b>2M</b>	<b>2N</b>	<b>2P</b>	<b>2R</b>	<b>2T</b>	<b>2U</b>	<b>2V</b>	<b>2W</b> (NO KEY)	



Copyright FCI.

spec ref	---	dr	Daniel Xiao	2014/01/20	projection	MM	size	A2	scale	5:1
tolerance std	ASME Y14.5M	eng	Terry Luo	2015/05/14		←	ecn no	-	rel level	Released
TOLERANCES UNLESS OTHERWISE SPECIFIED		chr	Martin Li	2015/05/14						
surface	✓	appr	Collins Lu	2015/05/14	title		ExaMAX VERTICAL HEADER		no	10124414
linear	0.X ±.3 0.XX ±.10 0.XXX ±.050	www.fci.com		cat. no.		SEE TABLE	Product - Customer Drw		rev	A
angular	0° ±2°							sheet 16 of 17		



NOTES:

- ① - CONNECTOR MATERIALS:  
HOUSING: HIGH TEMP THERMOPLASTIC, BLACK, UL94-V0  
IMLA PLASTIC: HIGH TEMP THERMOPLASTIC, BLACK, UL94-V0  
CONTACT: COPPER ALLOY  
GUIDE PIN: ZINC ALLOY  
POLARIZING PIN: ZINC ALLOY
- 2 - CONTACT PLATING:  
SEPARABLE INTERFACE:  
PERFORMANCE-BASED PLATING, QUALIFIED TO MEET THE REQUIREMENTS OF FCI PRODUCT SPECIFICATION GS-12-1096 INCLUDING TELCORDIA GR-1217-CORE (NOVEMBER 1995) CENTRAL OFFICE TEST SEQUENCE  
  
PRESS-FIT TAILS: TIN OVER NICKEL (LEAD FREE)
- 3 - PRODUCT SPECIFICATION: GS-12-1096
- 4 - APPLICATION SPECIFICATION GS-20-0361.
- 5 - PACKAGING MEETS GS-14-920 LEAD FREE LABELING SPECIFICATION.
- ⑥ - PRODUCT MARKING, (PROTOTYPE, PART NUMBER & LOT CODE), ON THIS SURFACE.
- ⑦ - THE MINIMUM CENTERLINE SPACING BETWEEN ADJACENT MODULES IS 20.0 mm FOR 10124414-101LF AND 22.0 mm FOR 10124414-102LF.
- ⑧ - CONNECTOR OUTLINE MAY BE SCREEN PRINTED ONTO CUSTOMER PCB TO BE USED AS A GUIDE FOR MANUAL CONNECTOR PLACEMENT.
- ⑨ - REFER TO CUSTOMER DRAWING 10119933 FOR INFORMATION ON PCB HOLE DIAMETERS AND PLATING OPTIONS
- ⑩ - THIS PRODUCT MEETS THE EUROPEAN UNION DIRECTIVES & OTHER COUNTRY REGULATIONS AS DESCRIBED IN GS-47-0004.
- ⑪ - REFER TO APPLICATION SPECIFICATION FOR TRACE ROUTING EXAMPLES THAT INCLUDE DIMENSIONS FOR ANTIPADS, TRACE WIDTH, TRACE SPACING, ETC.
- 12 - THE HOUSING WILL WITHSTAND EXPOSURE TO 260° C FOR 10-30 SECONDS IN A CONVECTION, INFRA-RED OR VAPOR PHASE REFLOW OVEN.
- ⑬ - THE ADVANCED MATE HEADER, 10124414-2XXLF, WHEN MATED WITH AN ADVANCED MATE RIGHT ANGLE RECEPTACLE, 10124413-2XXLF, WILL PROVIDE 2 PAIRS OF MATING CONTACTS THAT MATE 0.75MM BEFORE THE REMAINDER OF THE SIGNAL AND GROUND CONTACTS.
- ⑭ - THE SHORT DETECT HEADER, 10124414-3XXLF, WHEN MATED WITH A RIGHT ANGLE RECEPTACLE, 10124413-1XXLF, WILL PROVIDE 1 PAIR OF MATING CONTACTS THAT MATE 1.00 MM AFTER THE REMAINDER OF THE SIGNAL AND GROUND CONTACTS.
- ⑮ - THE ADVANCE MATE/SHORT DETECT HEADER, 10124414-4YYLF, WHEN MATED WITH AN ADVANCED MATE RECEPTACLE, 10124413-2YYLF, WILL PROVIDE 2 PAIRS OF MATING CONTACTS THAT MATE 0.75MM BEFORE THE REMAINDER OF THE SIGNAL AND GROUND CONTACTS AND 1 PAIR OF MATING CONTACTS THAT MATE 1.00MM AFTER THE REMAINDER OF THE SIGNAL AND GROUND CONTACTS.
- ⑯ - FOR CONNECTORS WITH EITHER A RIGHT OR LEFT GUIDE MODULE, A PHILLIPS PAN HEAD M2 X 0.4 HOLD-DOWN SCREW SHALL BE USED TO SECURE THE CONNECTOR AND GUIDE PIN TO THE PCB. THE SCREW LENGTH SHALL BE 2.0-6.0 mm PLUS THE THICKNESS OF THE PCB. SCREW IS NOT PROVIDED WITH THE CONNECTOR.
- ⑰ - LEFT / RIGHT INTERGRATED GUIDE ORIENTATION IS DETERMINED BY THE LOCATION OF THE GUIDE FEATURES WHEN LOOKING AT THE MATING FACE OF THE RIGHT ANGLE RECEPTACLE. THE LEFT / RIGHT DESIGNATION OF THE MATING HEADER IS DEFINED BY THE RIGHT ANGLE RECEPTACLE THAT IT MATES WITH (i. e. A RIGHT GUIDE VERTICAL HEADER MATES WITH A RIGHT GUIDE RIGHT ANGLE RECEPTACLE).

spec ref	---	dr	Daniel Xiao	201401/20	projection	MM	size	A2	scale	2:1
tolerance std	ASME Y14.5M	eng	Terry Luo	201505/14			ecn no	-	rel level	
TOLERANCES UNLESS OTHERWISE SPECIFIED		chr	Martin Li	201505/14			Released			
surface	✓	appr	Collins Lu	201505/14	product family	ExaMAX	no	10124414	rev	A
linear	0.X ±.3 0.XX ±.10 0.XXX ±.050			<b>title</b> ExaMAX VERTICAL HEADER ASS'Y, 2 PAIR, 80 POS, 10 IMLA		cat. no.	SEE TABLE	Product - Customer Drw	sheet 17 of 17	
angular	0° ±2°	<a href="http://www.fci.com">www.fci.com</a>		<b>PDS: Rev :A</b>		<b>STATUS:Released</b>		<b>Printed: May 15, 2015</b>		



Copyright FCI.