

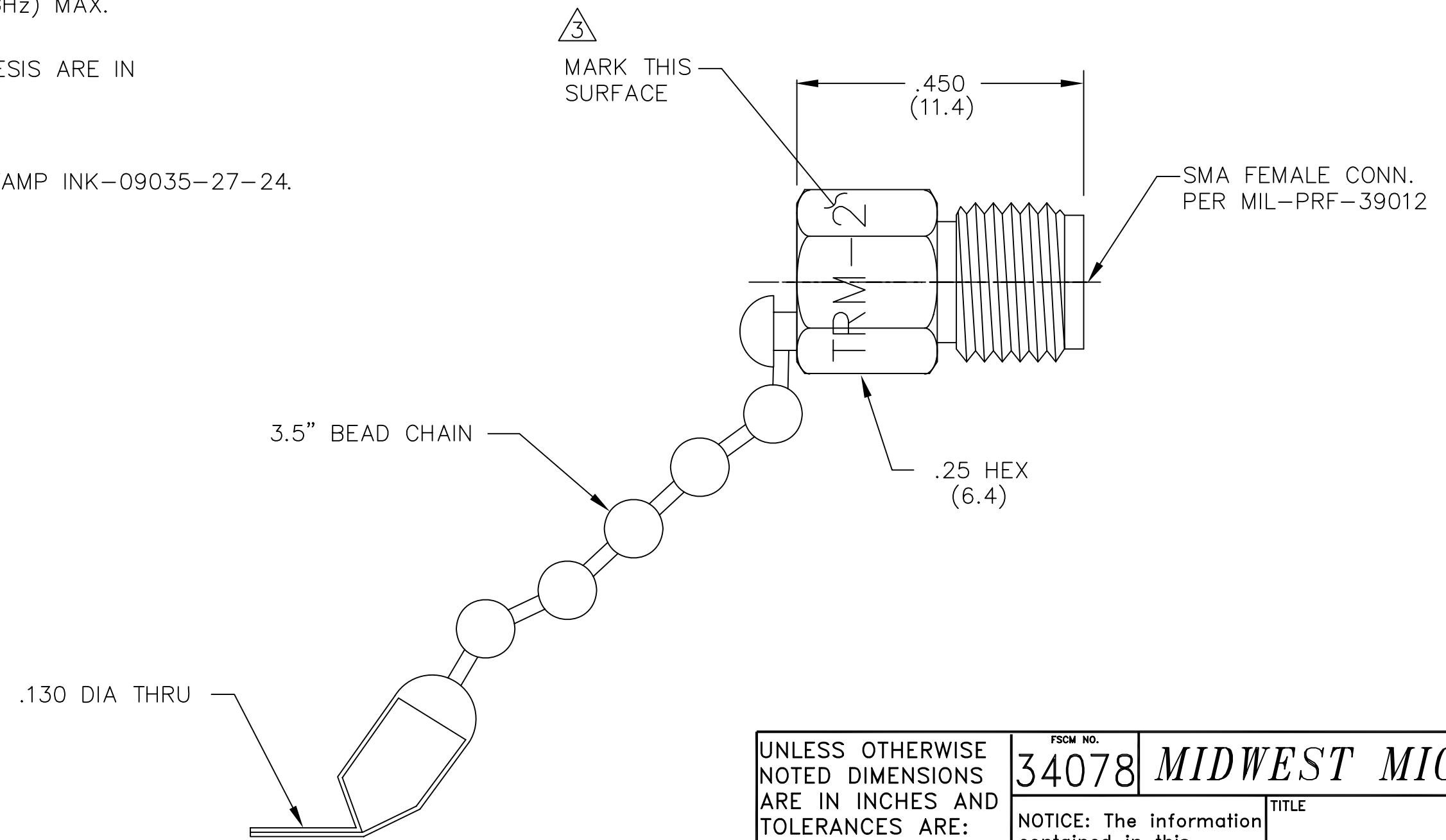
NOTES:

1.0 ELECTRICAL SPECIFICATIONS:

- 1.1 FREQUENCY RANGE: DC to 8.0 GHz
- 1.2 MAXIMUM INPUT POWER: 0.5 WATTS @ +25°C
DERATED LINEARLY TO 0 WATTS @ +125°C
- 1.3 OPERATING TEMP. RANGE: -55°C to +125°C
- 1.4 IMPEDANCE: 50 OHMS
- 1.5 VSWR: 1.05 + 0.008f(GHz) MAX.

2.0 DIMENSIONS IN PARENTHESIS ARE IN MILLIMETERS.

 MARKING:
MARK UNIT WITH INKSTAMP INK-09035-27-24.



REV.	DESCRIPTION	DATE
-	RELEASED	3/8/93
A	ECN 15059	2/1/96
B	ECN 18767	10/9/02

UNLESS OTHERWISE NOTED DIMENSIONS ARE IN INCHES AND TOLERANCES ARE:		FSCM NO. 34078		MIDWEST MICROWAVE	
3 PLACE DECIMALS ±.005		NOTICE: The information contained in this drawing is proprietary and must not be used without the permission of Midwest Microwave		TITLE TERMINATION	
2 PLACE DECIMALS ±.02					
FRACTIONS ±1/64					
PARALLELITY: T.I.R. _____					
FLATNESS: T.I.R. _____					
CONCENTRICITY: T.I.R. _____		DRAWN/DATE A.BEATTY 3/4/93		ENG./DATE G.KOZAK 3/5/93	
ANGLES AND PERPENDICULARITY: ±1'		CHECKED/DATE M.HOLLMAN 3/4/93		APPROVED/DATE	
DRAWING NUMBER TRM-2446-FC-SMA-02				SCALE: 5=1	
				SHEET 1 of 1	